

# COLUMNS

February 2016



THE LINDLEY PARK  
NEIGHBORHOOD ASSOCIATION  
NEWSLETTER  
LINDLEYPARKNC.COM

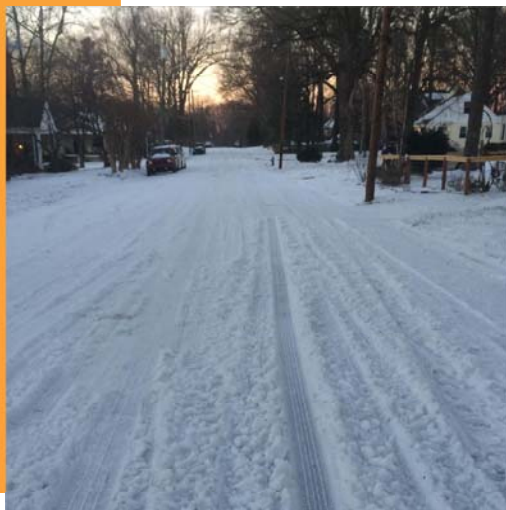
## HOPES AND DREAMS



### INSIDE THIS ISSUE

- 2 Inside Scoop (LPNA team and ad info)
- 3 Coffee shop profile
- 4 Dream Team
- 5 New initiatives
- 6 Lindley Elementary news
- 7 Real estate update
- 9 Funding
- 10 Map
- 11 LPNA contribution information
- 12 Upcoming events

The forecasters didn't quite know what to say about the first storm of 2016. It could be a disaster, they said, with deep snow and lots of ice. Stay home, they said. Well, it wasn't a disaster, and staying home isn't much of a disaster when you live in a walkable neighborhood with a grocery store, coffee shops and restaurants dedicated to opening up and serving. Most of us donned our snow boots, grabbed our sleds, put a sweater on the dog and made the most of a fun break to start the new year. Some of us even got together and started dreaming up some new ideas for the neighborhood. Inside, find out what's abuzz and how you can get involved!



For about five days most neighborhood side streets looked a lot like this — and for the most part, that was fine by us. Public schools shut down for two and a half days and all the streets were turned over to sleds.



Thanks to the dedication of Corner employees like Bestway Grocery cashier and ace snow shoveler Anjelica Latora, our Corner stayed open for business and gossip throughout the storm

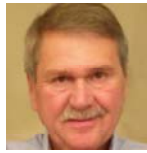
Photo credits: Sam Chip Cook, Steve Eury and Anjelica Latora

## LPNA TEAM



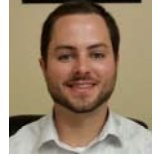
### STEPHEN JOHNSON

Chairman  
stephen@elamgardens.com



### BILL ECKARD

Govt/Community Liaison  
bill@billeckard.com



### ADAM SPIVEY

Vice Chairman  
nspivey@elon.edu



### JOSH SHERRICK

Events and Celebrations  
joshuasherrick@gmail.com



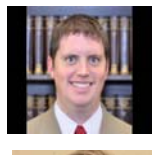
### ANNE EMBREY

Secretary/Communications  
amebrey@gmail.com



### ELIZABETH LINK

Healthy Neighborhood  
ezlink@yahoo.com



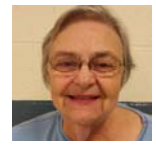
### BLAKE SAGAR

Treasurer  
bsagar@cfmccpa.com



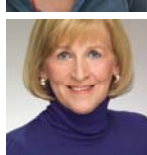
### KATHY NEWSOM

Newsletter Editor  
kathyhouseofhope67@gmail.com



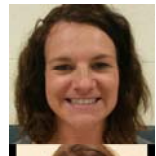
### MARY ALICE AUSTIN

District One Representative  
austingreensboro@aol.com



### PATTI ECKARD

Newsletter Advertising  
patti.eckard@gmail.com



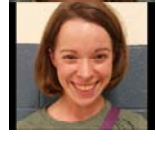
### AMANDA MEDENDORP

District Two Representative



### JOYCE EURY

Newsletter Distribution  
joyceury@gmail.com



### REBECCA MEDENDORP

District Three Representative  
beccaboone@hotmail.com



### SUSAN TAAFFE

Neighborhood Congress Rep  
susantaaffe1@gmail.com

### OPEN

District Four Representative



## NEWSLETTER

The Columns is published by the Lindley Park Neighborhood Association. Hand-delivered copies go to more than 1,200 households in the area.

The Columns is posted digitally at [www.lindleyparknc.com](http://www.lindleyparknc.com). Sign up to get it by email by contacting us at [lpnagso@gmail.com](mailto:lpnagso@gmail.com).

The Columns also can be found at Bestway, Gene's Barber Shop, Lindley Rec Center, Spring Garden Bakery and Common Grounds .

To advertise, contact Patti Eckard at [patti.eckard@gmail.com](mailto:patti.eckard@gmail.com) or (336) 632-1448.

## GOT IDEAS? NEWS?

This is your newsletter. We want to hear from everyone! Send stories, ideas, photos, history or questions to Kathy at [kathyhouseofhope67@gmail.com](mailto:kathyhouseofhope67@gmail.com)

**15% Off Drapes & Rugs**  
**When You Mention This Ad**

336-273-7588  
[fordhamscleaners.com](http://fordhamscleaners.com)



**BERKSHIRE  
HATHAWAY**  
HomeServices



**Sue Catherine  
REALTOR®**

**Yost & Little Realty**  
1103 North Elm Street, Suite 100  
Greensboro, NC 27401  
336-908-4196 M 336-272-0151 O  
336-714-6750 eFax  
[Sue.Catherine@BHHSYostandLittle.com](mailto:Sue.Catherine@BHHSYostandLittle.com)  
[www.SueCatherine.BHHSYostandLittle.com](http://www.SueCatherine.BHHSYostandLittle.com)

 A member of the franchise system of BHH Affiliates, LLC

## COMMON GROUNDS OFFERS A "THIRD SPACE"

By Kathy Newsom

"I like to think we are providing a third space," owner Dusty Keene says, "a space that isn't home and isn't work — but you feel at home here, and you can work here."

Common Grounds has certainly become that "third space" for many in the neighborhood.

Pop in anytime. You'll find a smattering of folks as diverse as the neighborhood. On any given day you might bump into a business woman grabbing a coffee on the go, a cluster of folks discussing a project, several people with laptops and headphones or a father and daughter playing chess. But none of that is unusual for a coffee shop, right?

Hang out for a few more minutes. A neighbor's friendly dog might walk up to say hi while you wait in line. Walk a little farther back and you might happen upon a small group of middle school boys playing Xbox in the den, a few UNCG students testing their mettle on the vintage arcade games and some Grimsley kids playing pool. You will start to notice that lots of folks are talking not just to the person they walked in with but to others at another table. Linger long enough and there might be a football game on the TV or a couple of musicians tuning up for open mic night. Maybe someone you know will walk in the door; even more likely, it's someone you might want to get to know. Ricky behind the counter is asking patrons what film he should show that night in their boutique movie theater. Maybe you will have another cup of tea and continue that conversation with someone you just met.

Common Grounds has a den, an arcade, a pool room and a movie theater in back. No, there isn't much that is common about this coffee shop.

Its drink menu starts with a house, er, neighborhood, coffee, called the Lindley Park Blend that's available by the cup or by a pound of beans. Coffee drinks are named after movie actors. The most popular are the Robert Downey Jr. (a salted caramel mocha and steamed milk with a shot of espresso) and the Jennifer Lawrence (white chocolate, pumpkin chai, steamed milk and espresso). Common Grounds also serves a variety of wines and draft and bottled craft beers.

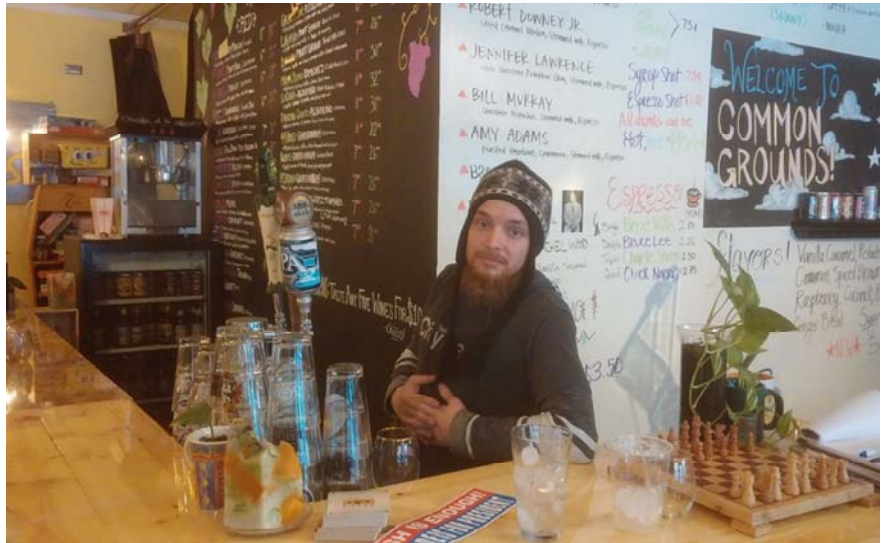
Hungry? Choose from neighbor-baked treats via Donna Dune Cookies, gluten-free goodies from Corner Market vendor Wallflour Bakery, bagels and even local beef jerky.

Common Grounds has a staff of three: There's Dusty, his younger brother Ricky and barista K.C.

Owners Dusty and Michele Keene have lived on Scott Avenue in Lindley Park since 2007 with their children Dominic and Ella. Originally Keene rented the rambling 2,700-square foot space to house his business "School Kids Chronicles."

Chronicles is a video-interviewing service that captures, like school pictures, an annual snapshot of children over time. Chronicles still exists, but the coffee shop, opened in 2013, has become the family's new passion. The neighborhood has embraced it and helped it grow.

**continued on page 8**



Ricky Keene keeps busy playing barista and barkeep on a recent snow day.



Dusty and Michele Keene

# 4 MOVERS & SHAKERS

## DREAM TEAM



**DAMON AKINS**

Living Map  
akinsdb@guilford.edu



**ASHLEY DUEZ**

Street Playgrounds  
ashleyduetz@gmail.com



**STEPHEN JOHNSON**

Pool Improvements  
stephen@elamgardens.com



**KATHY NEWSOM**

Rethinking Intersections  
kathyhouseofhope67@gmail.com



**ANNE EMBREY**

Tree Survey  
amebrey@gmail.com

## EDITOR'S NOTE

Like Lindley Park, the newsletter is always morphing to include more voices and ideas. This issue we are introducing you to a Dream Team. The Dream Team is a new and fluid group that surfaced from a brainstorming session in January. We discussed lots of ideas for the neighborhood. Several seem worth investing more time and energy into. These are the folks who agreed to take those ideas to the next level. The next level could be anything from planning an event or project, writing a grant proposal or maybe just brainstorming more over coffee. On the next page you can see their ideas fleshed out a bit more. If you are interested in learning more about these projects, their contact information is provided. We hope to add more members and dreams to the team in issues to come.

At the neighborhood association's general meeting Jan. 26, the current board members were reinstated. With the exception of some changes of district reps, the board remains the same heading into the new year.

The LPNA board monitors the long- and short-term interests of the neighborhood and makes sure that resources are well managed. The board members are the folks whom you can contact with your ideas and concerns. They are a dedicated and responsive group of volunteers. The board meets at 6 p.m. on the last Tuesday of each month at Common Grounds. These meetings are open to everyone, and they're a great way to get to know your neighbors and stay in touch with what's happening in the community.

In addition to this newsletter, there are many ways to stay plugged in. Our Facebook page is very active and is probably the best place to alert neighbors to a lost pet, to see what's coming up or if there have been last-minute weather-related changes to neighborhood events. You also can find these alerts under "recent posts" on our newly redesigned website at [lindleyparknc.com](http://lindleyparknc.com). While you are there, sign up to receive emails. You can always contact any of us on these pages directly.

Please support our advertisers and join in the neighborhood events and meetings. If you can, kick in a few bucks to the neighborhood association; page 11 makes it easy.

Hope to see you in 2016,

Kathy

## Big Ideas for 2016 and Beyond

Here are some of the initiatives that came out of brainstorming sessions. Jump on board one of these or suggest your own. We knit a bridge last year, so no idea is too out there!


**Living map.** As we approach Lindley Park's centennial, it's a great time to look to the past as well as the future. A living map allows us to collect artifacts (photographs, written and spoken memories, etc.) and layer them on a map to show where they occurred and how our neighborhood has changed over time. Contact Damon Akins at [akinsdb@guilford.edu](mailto:akinsdb@guilford.edu).

**Re-imagining intersections.** Our neighborhood is a mostly copacetic conglomeration of homes and businesses and quiet streets and not-so-quiet ones. We move on foot, bikes, skateboards, buses, cars and about any mode of transportation you can think of. We all want the places where these things intersect to be safe. This year we will look at the intersection of Spring Garden and Howard streets as well as traffic issues along Spring Garden. We also will look at ways we can communicate at these intersections: street murals, community notice boards, directional signs to amenities and more are up for discussion. Contact Kathy Newsom at [kathyhouseofhope67@gmail.com](mailto:kathyhouseofhope67@gmail.com).

**Pool improvements.** Lindley Park is one of only a few neighborhoods with a city pool. What can we do to make it better and boost its popularity among neighbors? We are exploring ideas like extended hours, shade, improving locker rooms, painting the building's exterior and more. Contact Stephen Johnson at [stephen@elamgardens.com](mailto:stephen@elamgardens.com).

**Tree survey.** This year we will undertake a survey of the trees along the parkway. We have scout troops eager to plot the trees, but they need help from adult volunteers. This is a project that will take place in the spring. Extensive tree knowledge is not a requirement. This will be a learning experience for all! Contact Anne Embrey at [aembrey@gmail.com](mailto:aembrey@gmail.com).

**Street playgrounds.** Ever want to just shut down the streets and play? We've done it before for the annual St Patrick's Day Parade, Knit the Bridge and for Halloween. Now we want to have a dedicated group that will create themed play spaces on different streets for blocks of time. Perhaps water play on Springwood? An adventure playground on Sherwood? A bike rodeo on Camden? Contact Ashley Duez at [ashleyduetz@gmail.com](mailto:ashleyduetz@gmail.com).



**HOPE CHAPEL**  
IN THE CITY. FOR THE CITY.

Sundays at 10:30am  
1825 Spring Garden St  
(behind The Blind Tiger)  
[hopechapelgreensboro.org](http://hopechapelgreensboro.org)

To See All Homes Listed For Sale  
In Lindley Park

Go To  
[www.BuyLindleyParkHomes.com](http://www.BuyLindleyParkHomes.com)



Andy Leung  
336.508.1111  
[Andy@TeamLeung.com](mailto:Andy@TeamLeung.com)

\*Each Keller Williams Realty is independently owned and operated.



Local pottery ♥ Home decor ♥ Clothing ♥ Gifts

gifts for your loved ones  
made with love

xo,  
**Art & Soul**



336.285.7343 | 1938 Spring Garden St. Greensboro NC | [artandsoulinc.com](http://artandsoulinc.com)

# 6 LINDLEY ELEMENTARY

By Anne Embrey

You might have heard about the need for classroom supplies. Enrollment has increased, and some families are unable to send in supplies for their children. To fill that gap, sometimes PTAs step in, sometimes teachers purchase supplies, and sometimes teachers go to the nonprofit Teacher Supply Warehouse.

In February, Guilford Education Alliance is holding a Love Our Teachers and Schools supply drive to help stock the warehouse for spring. To help, drop off items on Saturdays at the Corner Farmer's Market (corner of Elam and Walker) or make a financial contribution at [www.guilfordeducationalliance.org](http://www.guilfordeducationalliance.org)

The most needed items are No. 2 pencils, copy paper, construction paper, marble composition notebooks, top of pencil erasers, glue sticks, colored pencils, colored markers, adults scissors and tissues.

## Upcoming Lindley dates:

Feb. 8-12: Love the Bus week appreciating our bus drivers

Feb. 10: Kiosco Night from 5 to 9 p.m.

Feb. 27: Garden Clean-Up Day. Starts at 9 a.m. Bring shovels, rakes, wheelbarrows and work gloves. Everyone welcome!

March 7-11: Garden Week

March 9: Kiosco Night from 5 to 9 p.m.

March 16: Chick-fil-A Night

March 25 to April 3: Spring Break

## DANNY'S TIRE & AUTOMOTIVE CENTER



YOUR LINDLEY PARK NEIGHBOR SINCE 1988

FAMILY OWNED AND OPERATED

COME MEET YOUR NEIGHBOR

VISIT OUR WEBSITE FOR MORE INFORMATION



[www.dannystireandauto.net](http://www.dannystireandauto.net)

MENTION THIS AD AND RECEIVE \$5 OFF NC STATE INSPECTION

1112 PARK TERRACE

8-5 MONDAY - FRIDAY

336-292-1226

## Greensboro New School



A play based preschool  
and developmental  
kindergarten in our  
neighborhood

[greensboronewschool.org](http://greensboronewschool.org)  
(336) 202-2121



Worship with us  
Sundays at 11 a.m.  
Gathering to worship ...  
Departing to serve.

Lindley Park Baptist Church

"SERVING THE TRIAD SINCE 1978"



John Budd's  
Chimney  
Service LLC

2523 WESTMORELAND DR.  
GREENSBORO, NC 27408  
TELEPHONE (336) 282-1150

JOHN BUDD

MEMBER OF NORTH CAROLINA GUILD #233  
CHIMNEY SAFETY INSTITUTE OF AMERICA  
CERTIFICATION #3675  
BBB Member

## DEVELOPER INTERESTED IN WALKER-HOLDEN CORNER

By Patti Eckard

Word on the street is that an Ohio commercial developer, LRC Realty (formerly Levey and Co.), is interested in transforming the north side of Walker Avenue at Holden Road. The developer is represented locally by Wannamaker Realty based in High Point and Greensboro Realtor Wayne Smith.

We don't know a lot of details about the project because the developer has not approached the city to file an application nor the Lindley Park neighborhood for input.

What is known?

1. More than 20 property owners have been approached to sell their property to the developer. The sale is contingent on the developer getting the zoning changed from residential to commercial.
2. Most of the homeowners have signed on because they do not want to live next to a commercial building. Several just purchased their properties less than a year ago and are upset that they were not told about a proposed commercial development. A few are holding out. They want to remain in Lindley Park and don't think the sale price offered is enough to replace what they currently have.
3. A site plan shown to homeowners has a proposed 54,800-square foot building facing Holden with a parking lot facing Walker. Two curb cuts are shown on Walker; there's also one on Holden and possibly one on West Market Street. The city's Planning Department knows nothing about this proposed commercial development. It is assumed that the developer is waiting to get all of the landowners on board before approaching the city with the plan.

The neighborhood association is aware of this issue and will be keeping a close eye out for developments regarding the property. If you have any information to share, please contact me, Patti Eckard, at [patti.eckard@gmail.com](mailto:patti.eckard@gmail.com).



**Spring Garden**  
BAKERY  
AND  
COFFEEHOUSE

**LIKE US ON FACEBOOK**

**POST YOUR FAVORITE ITEM FOR A CHANCE TO WIN THAT ITEM FOR FREE**

**I've Sold 88 Houses in Lindley Park!**



For exceptional service, knowledge of the neighborhood, integrity and results, please give me a call.

Be sure to ask about the Complimentary Professional Staging Consultation with DBR Interiors when you list your home with me.

**Patti Eckard**  
336-339-5927  
[patti.eckard@gmail.com](mailto:patti.eckard@gmail.com)

Real Estate agent since 2000  
RE/MAX agent since 2006



## SHOWCASE YOUR HOME with PROFESSIONAL STAGING



Roxanne Tury 336.587.6036

**dbrinteriors**

**(Common Grounds, from p. 3)**

"I look around this place and it is like a little museum," Keene says. "My dad helped me build the bar, and then we added onto it as the business grew and we added wine and beer. Marie from over at Fishbones made these cool hanging lights for us.

"My buddy Jeff Beck painted that awesome mural right on the wall. The little knitted teacups there from Joe that used to barter them for coffee — just everything here has a personality and a story."

**WANT TO GO?**

**What:** Common Grounds

**Where:** 602 S. Elam Ave. (between Reto's and Lindley Park Vintage)

**Hours:** 7 a.m. to 9 p.m. Monday through Wednesday;  
7 a.m. to 11 p.m. Thursday through Saturday  
and 8 a.m. to 8 p.m. Sunday

**More info:** Call (336) 698-3888 or visit [commongrounds.coffee](http://commongrounds.coffee).

**Also:** To learn more about Chronicles, visit [www.schoolkidchronicles.com](http://www.schoolkidchronicles.com)

**UPCOMING EVENTS**

**Wednesdays:** House band Shiloh Hill plays indie folk style music

**Thursday:** Open Mic Night attracts everyone from Americana folk singers to a guy who can open with Gloria Gaynor's "I Will Survive" and beat-box his way into the "SpongeBob SquarePants" theme song.

**Fridays and Saturdays:** Local or touring musical acts; check the calendar at [commongrounds.coffee](http://commongrounds.coffee)

**Feb. 13:** The shop will hold an art opening at 6 p.m. for Lindley Park neighbor Andrew Comstock, a.k.a. "ARC the Guy." Sci-fi and cyberpunk fans will dig his eclectic and quirky exhibition of 3D pieces built from industrial objects and discarded electronics. This show contains unique interactive pieces that move, light up and make noise.



*Herford says* **Attention: All Cats & Dogs!**

**It's time to clean those pearly whites.**

Proper dental care helps give your pet a good, long life... preventing mouth infections and loss of teeth. Digital dental radiography enables us to detect early dental disease below the gum line. Bacterial infections in the mouth have a direct line through the bloodstream to your pet's heart, liver & kidneys.

Schedule an appointment in February and receive a  
**20% DENTAL DISCOUNT**



*University Animal Hospital*  
of Greensboro, LLC



CHRISTINE E. HUNT, DVM • CATHERINE M. MARKIJOHN, DVM  
1607-B West Friendly Ave. • Greensboro • 279-1003  
(At corner of W. Friendly Ave. & Westover Terrace ext.)  
[www.DrChristineHunt.com](http://www.DrChristineHunt.com)



In this issue, we've shared the dreams and visions of many of our neighbors. But how will we pay for any of this? There are several ways, and you can help!

**Vote in May!** In May there will be a citywide vote on how to spend Participatory Budgeting dollars from the Greensboro city budget. City Council District 4 (our district) will get \$100,000 to pay for the most voted-on projects. Currently, Stephen Johnson and Kathy Newsom from Lindley Park are working to get several projects on the ballot. Proposals we hope to get on the ballot are street murals, traffic calming on Spring Garden near Howard and pool enhancements. We can use help in developing these proposals to be winners. Please contact Stephen and Kathy to find out how you can help. To learn more about the PB process, visit [www.greensboro-nc.gov/index.aspx?page=4796](http://www.greensboro-nc.gov/index.aspx?page=4796).

**Develop grant proposals.** Last year, Adam Spivey applied for a \$1,300 grant from Building Stronger Neighborhoods that gave us the funding for Knit the Bridge, Pool-a-palooza and the pop-up Bark Park. This winter and spring, we will write proposals in hopes of funding similar initiatives. If you would like to help develop ideas or are interested in grant writing, contact Adam or Kathy.

**Donate to the LPNA.** Contribute to the neighborhood association to keep the traditional annual events alive and cover meeting and communication costs. See page 11 for ways to donate.

As always, it isn't just about money. Much of what happens in the Lindley Park neighborhood is driven by volunteers and a bunch of fun. Come to a meeting and get involved!



- A more comfortable home with less drafts and a more consistent temperature
- Lowered utility bills
- Improved indoor air quality
- Reduced waste and pollution

## **ERS** Energy Reduction Specialists of North Carolina

*Saving Energy.  
Saving Money.  
Everyday*

**336.643.9199**

**[www.ERSofNC.com](http://www.ERSofNC.com)**



- Extended life of your heating and cooling equipment
- Increased value and improved marketability of your home
- Environmental stewardship
- Lower your carbon footprint

Call or email Gary Silverstein ([Gary@ersofnc.com](mailto:Gary@ersofnc.com)) or Paul Swenson ([Paul@ersofnc.com](mailto:Paul@ersofnc.com)) to schedule your energy assessment to see how we can help you



# First Moravian Church

304 S. Elam Ave., Greensboro  
336-272-2196

[www.greensboromoravian.org](http://www.greensboromoravian.org)

*"In essentials, unity;  
in nonessentials, liberty;  
in all things, love."*

Sunday School for all ages, 10 am  
Worship, Children's Church, 11 am

*Come worship  
with your neighbors!*



## Norman B. Smith

Smith, James, Rowlett & Cohen, LLP

Provider of competent, efficient and affordable legal services since 1965.

101 S. Elm Street, Suite 310  
Greensboro, NC 27401

Tel: (336) 274-2992

Email: [normanbsmith@earthlink.net](mailto:normanbsmith@earthlink.net)



The Friends of the UNCG Libraries  
invite you to our upcoming  
programs



**Tuesday, March 22**  
**Friends of the UNCG Libraries**  
**Annual Dinner with Author Chris Bohjalian**

6 p.m. Cone Ballroom, Elliott University  
Center, UNCG. Tickets on sale from Triad  
Stage by calling 336-272-0160.

For more information about our events see  
[uncgfol.blogspot.com](http://uncgfol.blogspot.com).

Friends enjoy several privileges, including book  
and DVD checkout. Join today at  
[library.uncg.edu/giving/fol.aspx](http://library.uncg.edu/giving/fol.aspx)



**Tyler Redhead  
& McAlister**  
REAL ESTATE

**Leslie Stainback**

REALTOR/Broker

336.508.5634 cell

336.274.1717 office

[leslie.stainback@trm.info](mailto:leslie.stainback@trm.info)

[www.trmhomes.com](http://www.trmhomes.com)



## 2016 LPNA Contribution Form

LPNA contributions help make events like the Egg Hunt, Spring Fling, Chili Cook-Off and Holiday Luminaries happen. Contributions also support communications like our website and this newsletter. We hope you will contribute annually; a \$15 per household donation is suggested. Please fill out the form below and mail checks to: LPNA-Blake Sagar, c/o Farlow Marlowe & Co. PLLC, 4125-D Walker Ave., Greensboro, NC 27407. You can bring a contribution to the monthly LPNA board meeting or contribute online at [lindleyparknc.com/support](http://lindleyparknc.com/support).

Name(s) \_\_\_\_\_

Address \_\_\_\_\_

Email \_\_\_\_\_

Home phone \_\_\_\_\_

Donation amount \_\_\_\_\_

**Please indicate areas of interest:**

- |  |   |  |
|--|---|--|
| <input type="checkbox"/> Community art projects      | <input type="checkbox"/> Environmental concerns | <input type="checkbox"/> Living Map development  |
| <input type="checkbox"/> Newsletter development      | <input type="checkbox"/> Newsletter delivery    | <input type="checkbox"/> Public safety or zoning |
| <input type="checkbox"/> Event planning or execution | <input type="checkbox"/> Pool refurbishment     | <input type="checkbox"/> Children's programs     |

*The Dailey Renewal Retreat*  
*Bed and Breakfast*

808 Northridge Street  
 Greensboro, NC 27403



**336-451-7742**

[www.daileyrenewalretreat.net](http://www.daileyrenewalretreat.net)

### Richardson Classic Renovations



Scott Richardson 209-1080

Bob Richardson 253-6147

web: [richardsonclassicrenovations.com](http://richardsonclassicrenovations.com)

mail: [richardsonclassicrenovations@gmail.com](mailto:richardsonclassicrenovations@gmail.com)

**Gene's  
 Barber Shop**  
 2412 Spring Garden  
 299-5669



Established 1956.  
 53 years of service to the  
 neighborhood.  
 Walk-ins welcome or call for  
 appointment.  
 Tues.-Fri., 8 am - 6 pm  
 Sat. 7:30 am - 3 pm

At your service:  
 Frank Dorrity, Ben Ma,  
 Jim Nelson, Bill Young,  
 John Ma

# 12 FAMILY-FRIENDLY HAPPENINGS



**Saturday, Feb. 6 at 2 p.m.** is the **Un-knitting of the Bridge.**

Come out and help remove the knitted materials from the Wendover Avenue bridge. Take pieces and create yarn bombs elsewhere! For more information check out Knit the Bridge-Lindley Park on Facebook.

**Ongoing**

**Monday, March 7,** and the first Monday of each month: **The Corner Farmer's Market has its monthly meeting** at Common Grounds at 6 p.m. Neighborhood residents are welcome to attend, give input on the market and events and get to know the vendors.

**Tuesday, Feb. 23,** and the last Tuesday of each month: the **Lindley Park Neighborhood Association** meets at Common Grounds at 6 p.m. Come find out what's happening in the neighborhood and how you can get involved.

Every Monday night at 6:30: **Chess Club** at the Lindley Recreation Center. All ages and skill levels welcome!

**Wee-ones Meet-up Group** at Lindley Rec Center on Thursdays from 10:30 to 11:30 a.m. Caregivers are invited to come with their infants, toddlers or preschoolers to play and meet other families in the area. For more details, contact Christina Rodriguez at [la\\_chabochi@yahoo.com](mailto:la_chabochi@yahoo.com).

If you don't see your neighborhood event, it's because we don't yet know about it! Please contact Kathy Newsom at [kathyhouseofhope67@gmail.com](mailto:kathyhouseofhope67@gmail.com) and we'll help spread the word.

always  
shoot for  
the moon!

PEPPER  
MOON  
CATERING

Corporate Events | Theme Parties | Wedding Receptions  
Rehearsal Dinners | Buffet Dinners | Plated Dinners | Box Lunches  
Barbeques & Picnics | Full-Service Bars | Hors d'Oeuvres

1068 Boulder Road | Greensboro NC 27409  
Phone 336.218.8858 | [www.PepperMoonCatering.com](http://www.PepperMoonCatering.com)

**COMMON  
GROUNDS**  
Coffee | Espresso  
Wine | Beer  
Live Music  
Gallery  
Arcade

602 S Elam Ave | 336-698-3888  
[facebook.com/CommonGroundsGreensboro](https://facebook.com/CommonGroundsGreensboro)