

COLUMNS

THE LINDLEY PARK NEIGHBORHOOD ASSOCIATION NEWSLETTER
www.lindleyparknc.com

A Fun National Night Out

Some snapshots from Lindley Park's
National Night Out on August 7th:



Your City Council had a busy and productive 2nd Quarter

by Nancy Hoffmann

- Council focus is always on job creation and economic development, building infrastructure, and maintaining safety and security. These objectives drive all our major decisions.
- Passed a \$450 million budget for 2012-2013 fiscal year with no reduction in city services and no property tax increase. Thank you to all who attended the District 4 budget discussion at Lindley Park Recreation Center. This year's budget does include a very few fee increases to ensure some degree of cost recovery. This underscores my commitment to long-term, sound financial practices.
- Your Council made two significant executive "hires" filling both of the positions that council has direct oversight for. Denise Turner Roth was named City Manager and Mujeeb Shah-Khan City Attorney. I was pleased to be able to add my professional expertise to help guide the hiring process. By selecting both a seasoned internal candidate (City Manager Roth) and a well-regarded, experienced external candidate (City Attorney Shah-Khan), I believe we have positioned the city with the balanced leadership team needed to move us forward.
- Authorized \$24 million in capital improvements for the Coliseum to be completed over the next 3 years and financed with a limited obligation bond at approximately 1% interest. These improvements, including replacement of the worn-out Coliseum seats, will enable the Coliseum to remain competitive with newer, state-of-the-art facilities in competing cities to make sure we continue bringing the best events to Greensboro. The Coliseum is an economic engine generating approximately \$150 million annually into the Greensboro economy.
- Approved another phase of the Downtown Greenway which will connect the greenway section currently under construction at The Greenway at Fisher Park Apartments. When completed the Greenway will define the boundary of our Central City Business and Residential District, promoting a healthy lifestyle of walking and biking to shopping, dining, leisure, and entertainment venues.
- Approved at my request City sponsorship of WalkerFEST and the Tate Street Festival, family friendly events attracting a wide, diverse group of our citizens for a fun outing that supports local musicians, artisans, and neighborhood businesses. WalkerFEST and Tate Street attract more than 8,000 people.

...continued on page 5

Nancy Hoffmann
Creating a City Council Worthy of Its Citizens

Building Common Ground: Civility, Community, and Compassion

This is a project sponsored by the American Library Association (ALA) that seeks to assess the quality of life experienced by the community's senior citizens.

Volunteers are needed to work with older adults in our community. Most opportunities require only a few hours of your time. Trainings are required to participate.

The first event is the Day of Listening - Participate for one to three hours at a local senior care facility. Training is required. Training dates: September 13 from 6-9 pm at Greensboro Cultural Center or September 15 from 10 am to 1 pm at Central Library.

For more information contact Jacinta White at (336) 830-5486 or jacinta.white@poetryheals.com or visit <http://www.greensboro-nc.gov/index.aspx?page=3811>

NEIGHBORHOOD ASSOCIATION OFFICERS

CHAIR

Lauren Smith
smellyfour@yahoo.com
855.7657

SECRETARY

Diane Gackenbach
DianeGackenbach@FirstPointResources.com

PARLAMENTARIAN

Gertrude Beal
gbeal@guilford.edu
299.8897

PUBLIC WORKS

Virginia Driscoll
dachelmama@yahoo.com
855.5233

SOCIAL CO-CHAIR

OPEN

WAYS & MEANS

Frank Brooks
fbrooks1@triad.rr.com
708.0479

NEWSLETTER COORDINATOR

Larry Barnes
Larry.Barnes@wolfehomes.com
294-6344

NEWSLETTER LAYOUT/DESIGN

Michael Van Patter
michaelvanpatter@gmail.com
207.1977

DISTRICT 2 REP

Jeremy Sarine
jsarine@gmail.com
587.4502

DISTRICT 4 REP

Gertrude Beal
gbeal@guilford.edu
299.8897

ENVIRONMENT

Elizabeth Link
ezlink@yahoo.com
273.4672

FIRST VICE CHAIR

Michael Van Patter
michaelvanpatter@gmail.com
207.1977

TREASURER

Shawn McGovern
sbmcgove@hotmail.com
202.4195

PARKS & REC.

Barry Goldman
goldmab@gcsnc.com
852.1849

PUBLIC SAFETY

Stephanie McGovern
scdecker24@hotmail.com
207.0319

SOCIAL CO-CHAIR

OPEN

ZONING

Bill Schneider
bschneider@peppermooncatering.com
218.0085

NEWSLETTER ADVERTISING

Patti Eckard
patti.eckard@gmail.com
632.1448

DISTRICT 1 REP

Mary Alice Austin
292-1674
austingreensboro@aol.com

DISTRICT 3 REP

Stephen Johnson
sjohnson@rpm--data.com
275.1781

NEWSLETTER DISTRIBUTION

Open

EX-OFFICIO CHAIR

Bill Eckard
bill@billeckard.com
632.1448

NEWSLETTER ADVERTISING

The Columns is published by the Lindley Park Neighborhood Association. More than 1200 households receive hand-delivered copies. Issues are also posted on our website. Copies can be picked up at several neighborhood businesses. Publishing/Distribution is February, April, June, August, October and December.

Deadline for ads is the 10th day of the month prior to publication. Ad cost is \$35 per issue. Ad size is 1/6 of a page or 2 1/2 inches by 5 inches. The editor of the Columns reserves the right to edit as needed.

For more information, or to place an ad, contact Patti Eckard at Patti.Eckard@gmail.com or 632-1448.

From the Chair

by Lauren Smith

Is it just me or have you noticed a lot of moving trucks in Lindley Park? I know July traditionally is the busiest moving month of the year, but it seems there's been more activity than usual this summer. Hopefully that's a sign of an improving economy. So if you're new to Lindley Park, welcome! We hope you enjoy the neighborhood as much as we do and take advantage of our amenities: plenty of sidewalks, mature trees, the park and the arboretum, and great restaurants just a stroll away. Have any questions about your new neighborhood? Ask a neighbor (most of us are quite helpful), call the city information number 336-373-2489, or come to our next neighborhood meeting on September 25. We meet at Lindley Recreation Center, 7pm. We want to meet you! Also get on our email distribution list for the latest neighborhood news. Email us at lpnagso@gmail.com One last thing, school is back in session so slow down and watch those crosswalks. And all you kids at Lindley Elementary have a great year!

Police Chief to Speak at General Meeting

LPNA will be having its General Meeting on September 25 at the Lindley Park Recreation Center. Police Chief Ken Miller will attend our General Meeting to discuss crime trends in Greensboro and future planning of the GPD. We will also have a presentation and update on the column repairs along Spring Garden. Please plan to attend!

FYI

"FRIEND"

LINDLEY PARK

If you're a Facebook fan, join the 1,077 others who have "friended" the neighborhood through the page, "Lindley Park—Greensboro, NC." It's a quick and easy way to post a note, ask a question, share photos, and stay up-to-date.

LP ITEMS FOR SALE

- Lindley Park T-Shirts (\$15)
- History of LP books (\$12)
- Bumper Stickers (\$3)

All items are sold at Bestway, with the t shirt proudly displayed at the front of the store!

Thanks to Our Supporters

Listed on page 12 of the Columns are members of the LPNA that made a financial contribution to our Association. With that support we were able to sponsor the Easter Egg Hunt, Spring Fling, Fall Fest and Luminaries as well as support our web site. Thank you! Also, thanks to the advertisers in the Columns we were able to continue publishing.

The Columns cost around \$585.00 per issue to print 1250 copies.

We need to support those that advertise. A huge thank you goes to the unheralded folks that deliver the newsletter to every door. It is the neighborly involvement that makes Lindley Park so great.

Need an extra copy?

Lindley Park Columns is available at a number of local businesses. Stop by one of these shops and grab a copy.

Bestway - Walker Ave.
Gene's Barber Shop - Spring Garden St.
Lindley Rec Center - Springwood Dr.
Sisters Jewelry & Gifts - Tate St.
Tate St. Coffee House - Tate St.



Giving You a Change of Space!

Residential Interior Painting

Owner always on site!

Call Anita or Sharon
336-509-1031

theladies@anewviewpaint.com



Worship with us
Sundays at 11 a.m.
Gathering to worship ...
Departing to serve.

Lindley Park Baptist Church

**E
M
M
A
S**

**Better
Burgers**

Now
Serving
New
Orleans
Style
Snow Balls

**2206 Walker Ave.
Greensboro
336.285.9429**

Lindley Park – The Early Years

The cornerstones of the development of College Park, Lindley Park and Highland Park West were the 1892 Normal and Industrial School (now UNCG) to the east, the NC railroad to the south and the industrial community of Pomona to the west. The college spurred development of the College Park neighborhood, the railroad led to the construction of industries like Pomona Terra Cotta Co, Pomona Cotton Mill and the Mock, Judson, Voehgringer hosiery mill that employed many of the residents of Lindley Park and Highland Park West. John Van Lindley, the principal developer in the area and of Pomona wouldn't have established his expansive Pomona Nurseries in 1877 over much of the presentday Lindley Park without ready access to the railroad to transport his perishable products. Renamed the J Van Lindley Nursery, his enterprise had 900 acres devoted to trees and young plants and eleven greenhouses. The area was named Pomona for the Roman goddess of fruit trees.

Lindley conceived a way to connect the college and Pomona by way of a trolley service. In the early 1900s, he ceded 26 acres to Greensboro Electric Company for the construction of an amusement park, with the understanding that the company would extend the street car line to the park from downtown Greensboro. Lindley Park amusement area opened on July 4, 1902. The Park featured a pavilion, an artificial lake, a bath house (still standing behind a residence on Masonic Dr), a casino, and bowling alleys. The lake was fed by a spring near Howard St. The Park was connected to the city by a street car running along Spring Garden St. The three mile trip from downtown Greensboro took approximately 1 1/2 hours.

The streetcar company agreed to run a line to the amusement park for 15 years. When the agreement expired in 1918, the line was retained to

serve the growing population in the area. Lindley Amusement Park was closed and sold. Shortly before his death in 1918, J Van Lindley gave Greensboro 40 acres of land west of the former amusement park and east of Buffalo Creek for a civic park. He proposed that the city hire the best landscape architect available to create the most beautiful park the South. Noted landscape architect Earle S Draper was engaged to draw plans for the park and adjoining subdivisions, including the Lindley Park subdivision. The neighborhood was given gently curving streets centered on the old Lindley amusement park which was retained as parkland between Lindell and Willowbrook streets. Also retained were the stone and cast-iron gateposts of the amusement park.

Check out page 10 for a historical postcard with an aerial rendition of the neighborhood!

To read more about the early history of Lindley Park, you can purchase a copy of *Lindley Park- An Historical Neighborhood* by Cynthia Anthony, available through the Lindley Park Neighborhood Association. Another good resource is the book, *Greensboro, an Architectural Record* by Marvin Brown, available at the Greensboro Historical Museum's gift shop or area book stores.

UPCOMING EVENTS

SEPTEMBER 15	Miles for Matthew
SEPTEMBER 23	Food Truck Festival
SEPTEMBER 25	LPNA General Meeting
OCTOBER 20	LP Chili Cookoff



University Animal Hospital
of Greensboro, LLC

SEPTEMBER DENTAL CLINIC WITH 20% DISCOUNT

Proper dental care gives your pet a good, long life. Regular dental cleaning and polishing by our nationally certified veterinary dental hygienist, Jill Jacob, followed by the use of plaque prevention diets and weekly home dental care will prevent mouth infections and subsequent loss of teeth.

Digital dental radiography enables our dental team to detect early dental disease below the gum line. Remember, bacterial infections in the mouth have a direct line through the bloodstream to your pet's heart, liver and kidneys.

Pets will need normal health screen bloodwork prior to service. Call us today to schedule a dental appointment for your pet.

CHRISTINE E. HUNT, DVM • CATHERINE M. MARKIJOHN, DVM
1607-B W. Friendly Ave. • Greensboro • 279-1003
(Behind Credit Union at corner of W. Friendly Ave. and Westover Terrace ext.)
www.DrChristineHunt.com



**LIKE US ON
FACEBOOK**

**POST YOUR
FAVORITE ITEM
FOR A CHANCE
TO WIN THAT
ITEM FOR
FREE**



What is NeighborWoods?

The NeighborWoods concept originated from the 2025 Comprehensive Planning Steering Committee to initiate a community-wide tree planting / revegetation program.

City of Greensboro staff and a resident committee further developed the program to create a public / private partnership between the City of Greensboro and Greensboro Beautiful Inc. The mission of the NeighborWoods program is to help reforest Greensboro by planting trees in neighborhoods with help from neighborhood residents.

Each year, neighborhood associations may submit an application for the NeighborWoods Program to plant street trees in their neighborhood or trees in their community park. The selected neighborhood will then work with the City of Greensboro and Greensboro Beautiful staff to help choose tree species for the planting, train tree-planting volunteers, and select a tree-planting day. The program provides trees and mulch, and the neighborhood is asked to take responsibility for planting, watering and mulching and maintaining the trees.

Lindley Park will be turning in a submission in 2013. If you are interested in having a tree planted in your yard (in, or close to the right of way) email the association at lpnagso@gmail.com. We will also pick a day for volunteers to help plant the trees we receive. The more names we have before our submission date the better – don't hesitate to drop us a line!

City Council Update continued from page 2

- We continue to work through planning details for a Performing Arts Center downtown to replace the aging War Memorial Auditorium. The new PAC will be multi-functional and serve all the 21st century programming needs of our city with a cafeteria of entertainment offering something for everyone. It will be another economic generator, creating jobs, adding to household income, and increasing the downtown tax base.

Greensboro is on the cusp of reinventing itself. We have made the shift from a manufacturing economy built around textiles, furniture, and tobacco to one whose core industries are aviation; advanced manufacturing; data center, IT, financial services; transportation and logistics; and life science. Greensboro has a unique opportunity to market itself to young professionals who want an urban lifestyle and chance to start a family in a smaller, more intimate city with special character that offers access to quality education. When we invest in our future, we build a city to which our children and grandchildren will return to live, work, play, and raise families. To do this we must develop consensus around the vision of a reinvigorated and dynamic city. We must be bold and unafraid, marshal the public and private sectors and larger community to come together to invest and deploy our resources. Then we will rank among the best small cities in America. If we do that, people will come to Greensboro, our economy will grow, and our future will be secure.



Basic Backup

**Hard work - Easy prices
We've got your back!**

**(336) 420-5507 — (336) 420-5688
(or)
Office — (336) 852-5332
Email — basicbackup@earthlink.net**

Painting — Pressure Washing

Gutter Cleaning & Repair

Landscaping — Junk Removal








Lindley Park Gates – In Need of Repairs

Corners of Spring Garden and S. Lindell and Willowbrook

Lindley Park and its surrounding development north of Spring Garden Street were designed in the late teens by Charlotte landscape architect Earle Sumner Draper on the site of the former Lindley Park Amusement Park. These tapered gateposts and walls, formed of brick and roughly finished stones with the words "Lindley Park" drawn between them in wrought iron, may be those saved from the park entrance when the development was begun.



 **SISTERS**
Jewelry & Gifts



**Sterling Silver
Amber
Turquoise
Gift Cards**

330 Tate Street
336.574.3889
Mon-Sat 10-6:30

dignity
love

It's what all pets deserve.

Lap of Love provides veterinary hospice care for elderly and terminally ill pets at home. Veterinary Hospice is a specific approach to patient care that promotes quality of life and respect for the human-animal bond. When ready, we help families into the next step with peaceful in-home euthanasia service. This could be the single, most compassionate thing you'll ever do for your pet.

Click or call for more information:

336-484-1288

drsara@lapoflove.com

Serving pets in the Piedmont Triad


Lap of Love
VETERINARY HOSPICE
& In-Home Euthanasia
www.LapofLove.com

Save The Columns Contributors

As you can see in the pictures above, the Columns are in need of significant repair. The LPNA is in the process of finding a contractor and applying for grants, and is also seeking contributions to make the repairs possible. If you are interested in pitching in, send an email to lpnagso@gmail.com or see the contributions information on page 12. Thanks to those who have already made a contribution!

Kathy and John Newsom
Madeline Fiol
Wendy Helton Johnson
Chris Hutts
Donna Miller
Ken and Megan Thomson
Cathy Branscom\
Dianne & Steve Elliott
Azalea & Joseph Edwards
David & Mary Ann Murray
Michael & Bev Eckard
Bill & Patti Eckard
David Schlosser
Danielle & Jonathan Mitchell
Issac & Mary Kristen Clark
Christine Whitman

Miles For Matthew

Dear Neighbors,

On September 15, Lindley Park will host the 4th annual Miles for Matthew 5K and 10K runs to benefit Parent Project Muscular Dystrophy. This event raises money for Duchenne muscular dystrophy research. Duchenne is a lethal muscle disorder that affects 1 in 3,500 boys. It destroys all skeletal muscle function over time and currently there is no cure. Our son, Matthew lives with Duchenne and we organize this race in his honor. We would love your support as a runner, walker or even as a cheerleader from your front porch or sidewalk. Even if you do not plan to participate, please visit the website below to see the race routes. Some parts of the neighborhood will be closed between 8 am and 11:30 am on September 15. We are proud to live in such a supportive community and are looking forward to a great event!

www.parentprojectmd.org/milesformatthew

Sincerely,

Allison and Bobby Greiner



Ideas for the Newsletter

We would love to have you participate in the Columns by submitting articles you feel would be interesting or beneficial to the neighborhood. We would love to have submissions from your kids also (artwork, writing, photos, etc.). Do you have a neighbor with an interesting story to tell? Do you have neighbors that are new to the area? Write us about it. We are always interested in any history of the neighborhood that you may know about or have a connection to.

What makes this neighborhood great is the strong sense of community and the diversity of our residents. The Columns serves as glue to connect us to one another. It is one of the reasons we are the envy of other in-town neighborhoods!

Please send all submissions to lpnagso@gmail.com. Keep in mind that the newsletter is published about every other month with deadlines on (or about) the 1st of Feb., April, June, Aug., Oct. and Dec.

Thanks for making LP great!

Please Support LPNA!

Your contributions help sponsor our wonderful neighborhood events, such as the Easter Egg Hunt, Spring Fling, Fall Fest and Holiday Luminaries. For only \$15 a year, you can help make our neighborhood association the best it can be! Please fill in the contribution form on the last page of this newsletter.



Screen Printing
Custom Apparel
Design

**“Let us get
our paws
on you.”**

336.543.3737
LuckyDogPawprints.com



**Tate Street
Coffee House**

Gourmet Coffees,
Excellent Espresso Drinks,
Delicious Desserts

Join us for Sunday morning jazz

334 South Tate Street
Mon.-Sat. 7 am - 11 pm
Sun. 8 am - 11 pm

*Owned and Operated
by Your Lindley Park Neighbor*



HOPE CHAPEL
IN THE CITY. FOR THE CITY.

Join us for worship services
on Sundays at 10:30am
at 1825 Spring Garden St.
Or for one of our service projects
around Greensboro.
More information at:
www.hopechapelgreensboro.org

Are You Ready for Some Chili?

Doesn't feel like Fall yet, but the Annual Lindley Park Chili Cook Off will be here before you know it. Mark your calendar for October 20, 4 -7PM. Music, socializing, and of course, Chili will be in abundance! Last year we had about 20 entries in various categories; Traditional, Non-traditional, vegetarian, hot, mild, etc. and we hope to have as many (or more) this year. Put your recipe to the test! Register your entry online at <http://lindleyparknc.com/chilicookoff>. Fabulous prizes will be awarded! Not much of a cook? That's OK, we still need folks to bring the fixin's: tortilla chips, cornbread, shredded cheese, chopped onion, sour cream, hot sauce, or anything else you like with your Chile. We also need deserts, and don't forget to BYOB & B (that's beverage and bowl, if you can.) Keep your fingers crossed for good weather, it promises to be a great time!



MASTER ELECTRICIAN

30 Years Experience
Local References
Licensed, Bonded,
Insured

Our specialty: older home
repair and installation

MACK MELVIN
273-9348

LIVE AND SILENT AUCTION

SAT., OCT. 13, 2012

(RAIN OR SHINE)

FIRST MORAVIAN CHURCH

304 South Elam Avenue

Doors open at 8:00 AM

(enjoy ham biscuits & inspect items for auction)

Silent Auction 8:00 AM until 10:30AM

Live Auction begins at 9:30AM

To See All Homes Listed For Sale
In Lindley Park

Go To

www.BuyLindleyParkHomes.com



Andy Leung
336.508.1111
Andy@TeamLeung.com

*Each Keller Williams Realty is independently owned and operated.





Spring Garden Food Truck Festival

On September 23rd the Spring Garden Food Truck Festival is scheduled to be held at the corner of Chapman and Spring Garden St. It starts at 4:00pm and runs until 9:00pm. Live music and vendors will create an exciting atmosphere to introduce this concept of dining to our community. Greg Munning, owner of Taqueria El Azteca food truck says food trucks bring people together, as customers stand around and talk to each other instead of sitting in separate booths. They're convenient, often have excellent food and can transform an asphalt wasteland into a destination. Come out and enjoy!

DETAILS

Sunday, September 23
4:00pm-9:00pm
Corner of Spring Garden
and Chapman



Richardson Classic Renovations



Scott Richardson 209-1080

Bob Richardson 253-6147

web: richardsonclassicrenovations.com

mail: richardsonclassicrenovations@gmail.com

WOODWORKS HARDWOOD FLOORING

Installation & Refinishing

Shea Prine
707.2919
Carol Groover
580-0978



always
shoot for
the moon!



Corporate Events | Theme Parties | Wedding Receptions
Rehearsal Dinners | Buffet Dinners | Plated Dinners | Box Luncheons
Barbeques & Picnics | Full-Service Bars | Hors d'Oeuvres

1068 Boulder Road | Greensboro NC 27409
Phone 336.218.8858 | www.PepperMoonCatering.com

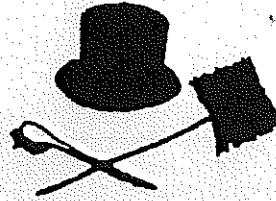
**Gene's
Barber Shop**
2412 Spring Garden
299.8669



Established 1956.
53 years of service to the
neighborhood.
Walk-ins welcome or call for
appointment.
Tues.-Fri., 8 am - 6 pm
Sat. 7:30 am - 3 pm

At your service:
Frank Dorrity, Ben Ma,
Jim Nelson, Bill Young,
John Ma

"SERVING THE TRIAD SINCE 1978"



**John Budd's
Chimney
Service LLC**

2523 WESTMORELAND DR.
GREENSBORO, NC 27408
TELEPHONE (336) 282-1150

JOHN BUDD

MEMBER OF NORTH CAROLINA GUILD #233
CHIMNEY SAFETY INSTITUTE OF AMERICA
CERTIFICATION #3675
BBB Member

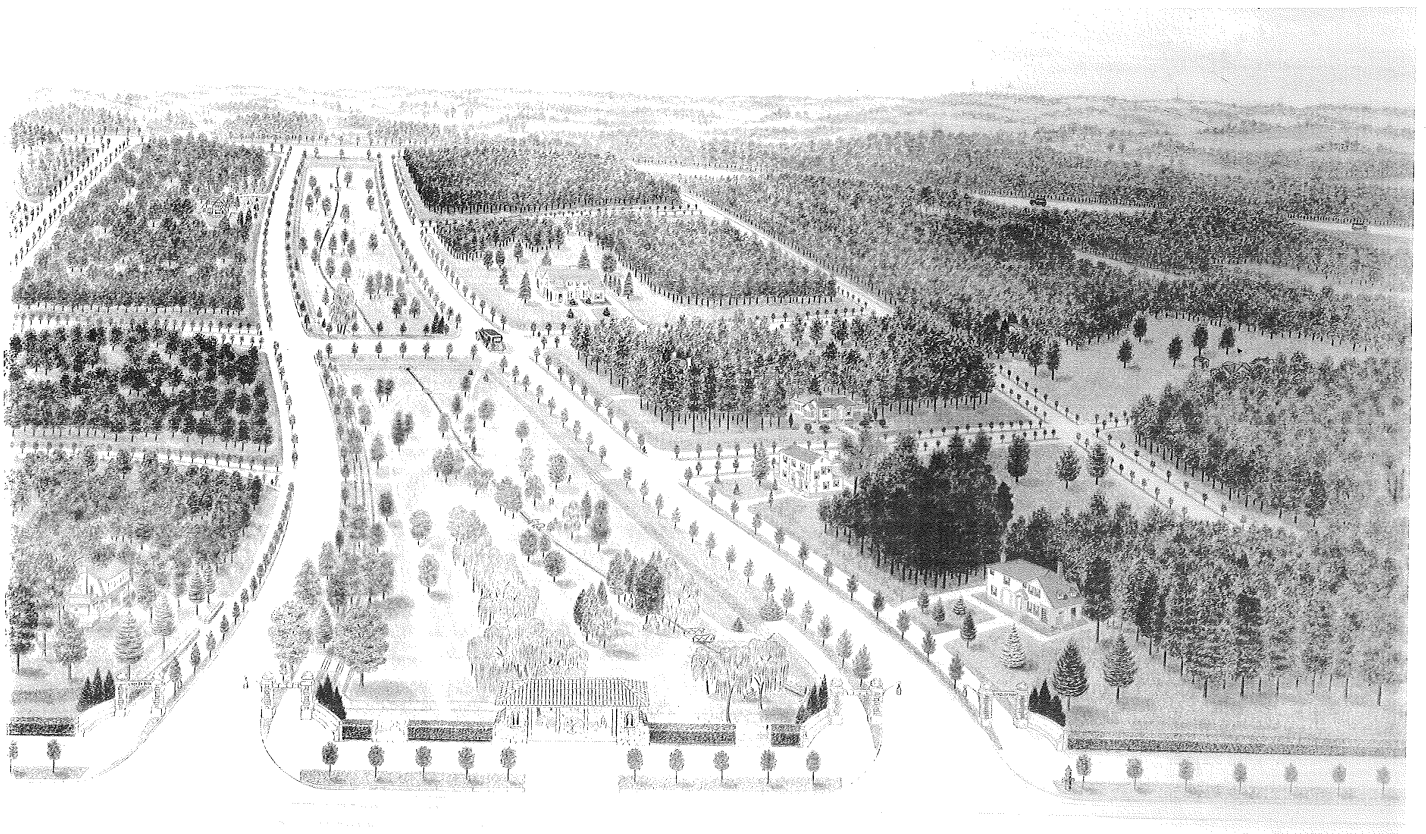


John Myers
336-558-5840

Green door builders, LLC

Greensboro, NC
336-294-4053

W.W Whaley, WA Roberts Film Co. Greensboro, NC (circa 1920s)



Dry Basement Basics

If a frequently wet basement has you frustrated, take heart. Some simple routine maintenance work around your house might solve the problem.

Water in the basement is a common condition, according to the American Society of Home Inspectors. But it's a concern, says Tom Feiza, author of *How to Operate Your Home*, because moisture in the basement can lead to other problems. "The biggest cause of condensation in windows is a wet basement," says Feiza. "Plus water against the foundation can cause structural damage."

To help prevent a wet basement or crawlspace, Feiza recommends starting with gutters, grading and downspouts.

- **Gutters.** Clean and repair gutters every spring before heavy rains and late in the fall after leaves have fallen.
- **Grading.** The surface of the soil should slope away from your house, dropping 6 inches for every 6 feet. "Walk around your house during a heavy rainstorm to make sure there's no water pooling around the foundation," says Feiza.

- **Downspouts.** Keep downspouts free of debris and use extensions to route water at least 6 feet from the foundation.

Feiza also recommends sealing basement window wells tightly to the foundation and keeping them clean inside. The window well bases should be surfaced with 6 to 18 inches of gravel, not mud. For added protection, equip each well with its own drain or direct water into an exterior drain tile system through the gravel base.

When Problems Persist

If routine fixes don't correct the moisture problem, you may need to seek professional help. "It varies from house to house," says Feiza. "But, usually the next place to look is to a drain tile system and sump pumps." This system is designed to collect water from around the foundation and deposit it into a sump pit, where a pump sends it away from the house.

But before you invest time and money into an expensive system, remember this: "A wet basement or crawlspace is rarely caused by underground water," says Feiza. "It's almost always caused by water against the foundation. Clean your gutters. That's the most important thing."

Reprint from State Farm July 2010 issue



*Nobody Knows Your Neighborhood
Better than your Neighbor!*

For exceptional Service, Knowledge,
Integrity and Results—please give me a call.

Patti Eckard, REALTOR® CRS, GRI, SRES
RE/MAX REALTY CONSULTANTS
2621 Beechwood St.
Tel: 339-5927
Email: Patti.Eckard@gmail.com
Website: www.PattiEckard.com



GUY P. HARTY PLUMBING

"Specializing in Older Faucets & Fixtures!"

336-549-3440

336-856-9640

Licensed • Bonded • Insured





Lindley Park Neighborhood Association Supporters, 2012

With neighbor support, the association is able to sponsor the annual Easter Egg Hunt, Spring Fling, Fall Feste, and Holiday Luminaries. Your contributions also helped launch our Lindley Park Web site.

Annie Cahill & Neil Swenson
 Palmer & JP McIntyre
 Lisa Tolbert
 Mike Simons
 Shera Bilisoly & Jack Osborne
 Alice Connelly
 Bernie & Meg Sisk

Jack & Sharon Ridge
 M. Gertrude Beal
 Anne & Jerry Baumgartner
 Lauren Smith & John Kelly
 Daniel Krout & James Turnstall
 Steve & Diane Trull
 Bill & Patti Eckard

Kathryn Pike
 Bud & Virginia Nash
 Mary Ann & David Murray
 Porter Gibson
 Larry & Charlotte Barnes
 Joe Wood
 Philip & Jeri Henderson

Shawn, Stephanie & Alice McGovern
 John & Patti Raxter
 Alicia Warrick
 Carolyn Shankle & Moreland Smith
 Joyce & Steven Eury
 Sheila Duell & Robert Bellomy

2012 LPNA CONTRIBUTION FORM

Now's a good time to make a contribution to your neighborhood association. Please fill out the form and mail it with your check to the address listed below. If you'd like to be involved with any of the committees, or activities, please check your preference.

Name(s): _____ Address: _____

Email: _____ Home Phone: _____

PLEASE CHECK YOUR INTEREST(S):

- Environmental Issues FUN-raising Park Preservation Website PublicSafety/Public Words (speeding, burglary, sidewalks, etc)
- Zoning Issues Neighborhood Loing-Range Plan Social Activities (spring, fall events & Christmas Luminaries)
- Newsletter Volunteer — help distribute in your area

\$\$ household contribution enclosed (\$15 suggested) \$ _____ Date: _____

Please make checks payable to LPNA and mail to: LPNA c/o Shawn McGovern, 418 Scott Ave., Greensboro, NC 27403