

COLUMNS

THE LINDLEY PARK NEIGHBORHOOD ASSOCIATION NEWSLETTER
www.lindleyparknc.com



Spring Fling!

The social committee churned out another big hit with the 2011 Lindley Park Spring Fling! Not entirely sure what type of crowd to expect, due to Kentucky Derby parties and graduation ceremonies, the neighbors put out some chairs and tables, brought in a band, fired up the grills and cooked up a good time.

Thanks to those who helped with kids games, manned the grill, and brought delicious dishes to share. Our neighbors are what make Lindley Park the best.
(more pictures on page 10!)

FRESH BAKED BREADS • SCONES
MUFFINS • CROISSANTS • WHOLE WHEAT BUNS AND TWISTS • BAGELS
LUNCH TRIANGLES • GREEK BUNS • HOMEMADE GRANOLA • BROWNIES
TAHINI COOKIES • FRUITBARS




Spring Garden
BAKERY AND COFFEEHOUSE

NOW OPEN SUNDAYS
FREE Wi-Fi
HOMELAND CREAMERY
ICE CREAM

MON-FRI: 7AM-6PM
SAT 7AM-2PM
SUN: 8AM-2PM

1932 SPRING GARDEN ST.
(NEXT TO HOLLIDAY'S HARDWARE)
TEL: 336 272-8199



First Moravian Church

304 S. Elam Ave., Greensboro
336-272-2196
www.greensboromoravian.org

*"In essentials, unity;
in nonessentials, liberty;
in all things, love."*

Sunday School for all ages, 10 am
Worship, Children's Church, 11 am

Come worship
with your neighbors!

NEIGHBORHOOD ASSOCIATION OFFICERS

- CHAIR**
Lauren Smith
smellyfour@yahoo.com
855.7657
- SECRETARY**
Diane Gackenbach
DianeGackenbach@FirstPointResources.com
- PARLAMENTARIAN**
Virginia Driscoll
dachelmama@yahoo.com
855.5233
- PUBLIC WORKS**
Joyce Eury
eury1234@bellsouth.net
292.7129
- SOCIAL CO-CHAIR**
Carrie Little
crlittle@triad.rr.com
854.0503
- WAYS & MEANS**
Frank Brooks
fbrooks1@triad.rr.com
708.0479
- NEWSLETTER COORDINATOR**
Larry Barnes
Larry.Barnes@wolfehomes.com
294.6344
- NEWSLETTER LAYOUT/DESIGN**
Michael Van Patter
michaelvanpatter@gmail.com
207.1977
- DISTRICT 2 REP**
Jeremy Sarine
jsarine@gmail.com
587.4502
- DISTRICT 4 REP**
Gertrude Beal
gbeal@guilford.edu
299.8897
- ENVIRONMENT**
Elizabeth Link
ezlink@yahoo.com
273.4672
- FIRST VICE CHAIR**
Michael Van Patter
michaelvanpatter@gmail.com
207.1977
- TREASURER**
Palmer McIntyre
mcintyrepalmer@gmail.com
854.4080
- PARKS & REC.**
Barry Goldman
goldmab@gcsnc.com
852.1849
- PUBLIC SAFETY**
Stephanie McGovern
scdecker24@hotmail.com
207.0319
- SOCIAL CO-CHAIR**
Charlotte Barnes
mwgmom3@msn.com
- ZONING**
Bill Schneider
bschneider@peppermoonca-
tering.com 218.0085
- NEWSLETTER ADVERTISING-**
Patti Eckard
patti.eckard@gmail.com
632.1448
- DISTRICT 1 REP**
Open
- DISTRICT 3 REP**
Stephen Johnson
sjohnson@rpm--data.com
275.1781
- NEWSLETTER DISTRIBUTION**
Open



John Myers
336-558-5840

Green door builders, LLC

Greensboro, NC
336-294-4053

NEWSLETTER ADVERTISING

The Columns is published by the Lindley Park Neighborhood Association. More than 1200 households receive hand-delivered copies. Issues are also posted on our website. Copies can be picked up at several neighborhood businesses. Publishing/Distribution is January/February, March/April, May/June, July/August, September/October and November/December.

Deadline for ads is the 10th day of the month prior to publication. Ad cost is \$35 per issue. Ad size is 1/6 of a page or 2 1/2 inches by 5 inches. The editor of the Columns reserves the right to edit as needed.

For more information, or to place an ad, contact Patti Eckard at Patti.Eckard@gmail.com or 632-1448.

Proper Dental Care gives your pet a good long life

Regular dental cleaning and polishing by our nationally certified veterinary dental hygienist, Jill Jacob, followed by the use of plaque prevention diets and weekly home dental care will prevent mouth infections and subsequent loss of teeth. Digital dental radiography will enable our dental team to

detect early dental disease below the gum line. Remember, bacterial infections in the mouth have a direct line through the bloodstream to your pet's heart, liver and kidneys. Call us today to schedule a dental appointment for your pet. And ask about \$50 Purina® rebate!

University Animal Hospital of Greensboro, LLC



CHRISTINE E. HUNT, DVM • CATHERINE M. MARKIJOHN, DVM
1607-B W. Friendly Ave. • Greensboro • 279-1003

Behind Credit Union at corner of W. Friendly & Westover Terrace ext. www.DrChristineHunt.com

From the Chair

Lauren Smith

Is it just me, or does time slow to a standstill in the summer? Maybe it's a carryover from my childhood, when there was no school schedule to dictate comings and goings. The hot sticky days all seemed to meld together, beginning with a morning trip to the garden to pick tomatoes and beans. Then midday, off to the pool for a few hours, and finally a late afternoon game of kickball or baseball with the neighborhood kids. Repeat for about three months, with the occasional interruption to visit relatives or the beach.

Even now, as an adult, I mentally still think summertime will reveal itself very slowly, like peeling an extremely large onion. Oh (I tell myself), there is plenty of time to work in the yard, clean out the garage, read the books on my nightstand, learn to knit, etc. Then the humidity arrives, and the summer doldrums settle in. I become quite lethargic, and suddenly, it's Labor Day. So to those of you who actually do learn to knit this summer, congratulations! Maybe you can give me lessons in September.

Need an extra copy?

Lindley Park Columns is available at a number of local businesses. Stop by one of these shops and grab a copy.

Bestway - Walker Ave.
Gene's Barber Shop - Spring Garden St.
Lindley Recreation Center - Springwood Dr.
Sisters Jewelry & Gifts - Tate St.
Tate St. Coffee House - Tate St.

Thanks to Our Supporters

Listed on page 12 of the Columns are members of the LPNA that made a financial contribution to our Association. With that support we were able to sponsor the Easter Egg Hunt, Spring Fling, Fall Fest and Luminaries as well as support our web site. Thank you! Also, thanks to the advertisers in the Columns we were able to continue publishing. The Columns cost around \$585.00 per issue to print 1250 copies. We need to support those that advertise. A huge thank you goes to the unheralded folks that deliver the newsletter to every door. It is the neighborly involvement that makes Lindley Park so great.

FYI

"FRIEND" LINDLEY PARK
If you're a Facebook fan, join the 858 others who have "friended" the neighborhood through the page, "Lindley Park—Greensboro, NC." It's a quick and easy way to post a note, ask a question, and share photos.

WALKERFEST
Celebrate The Lindley Park Neighborhood with your family, friends and neighbors at this year's first annual street festival known as WalkerFEST. WalkerFEST will be held Saturday, July 9th, 2011 from 1:00 to 8:00 on the corner of Walker and Elam Avenues.

Annoying Yellow

Abbey Smith

Happy Yellow,

Happy Yellow

That is all I think of when I think of Yellow,

I think of taxi cabs and highlighters,

I think of summer sun and dandelions,

But when you put Yellow next to another color,

That other color wilts and bends.

You might think Yellow has a lot of friends?

No.

Purple, blue even green all hate Yellow

"Yellow is annoying get away from us Yellow."

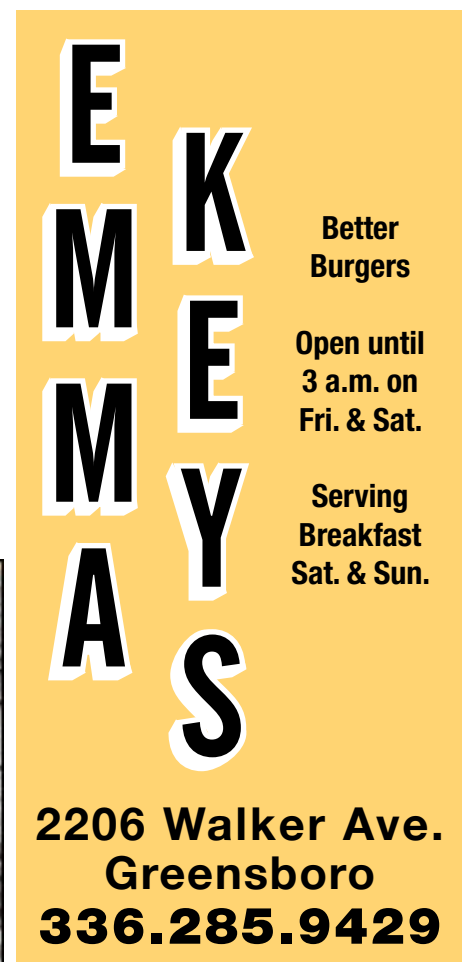
Get away from us annoying Yellow."



The Dailey Renewal Retreat

336-451-7742
808 Northridge St.
Greensboro, NC 27403

www.daileyrenewalretreat.net
Beauty, Comfort & Convenience you can afford; your neighborhood Victorian Inn



EMMYS

Better Burgers

Open until 3 a.m. on Fri. & Sat.

Serving Breakfast Sat. & Sun.

**2206 Walker Ave.
Greensboro
336.285.9429**

"SERVING THE TRIAD SINCE 1978"



**John Budd's
Chimney
Service LLC**

2523 WESTMORELAND DR.
GREENSBORO, NC 27408
TELEPHONE (336) 282-1150

JOHN BUDD

MEMBER OF NORTH CAROLINA GUILD #233
CHIMNEY SAFETY INSTITUTE OF AMERICA
CERTIFICATION #3675

BBB Member

GUY P. HARTY PLUMBING

"Specializing in Older Faucets & Fixtures!"

336-549-3440

336-856-9640

Licensed • Bonded • Insured

Meet a Neighbor

An Interview with Anne Russel

Deep in the country, near Rock Creek Dairy Rd., you will find the spot of Anne Russell's first home. You will not find a mansion, or a small little shack. In fact, you will find nothing at all. But in 1934, there was a modest hunting lodge there, with a wood burning stove and buckets of creek water. Deep inside this humble abode, there were the inhabitants, a man, wife and a couple children running around. This was the first house of Anne Russell.

Her early childhood years were spent here, provided with a wonderful housewife mother and a hardworking father who was employed at a bank in Greensboro. Everything was going well, in fact, until the Great Depression. It was until that day when her father went to work and saw that the bank was closed. Forever.

It was after that they took residence in Greensboro for the children to start their education. The adaptation was near flawless, as Anne found herself soon making friends around the neighborhood. Two of the many she met were Bobby and Billy Wagner. Her daytime activities other than school and music included playing Kick the Can and climbing the huge tree in front of her home in Lindley Park.

The school she attended was Lindley elementary school (sound familiar?). Looking back she recalled that her fondest memories were of the annual May Day celebration that took place in the amphitheater in back of Lindley. (What we now know as the "sledding hill"). It was here a huge May Pole was erected and the crowning of the May Queen took place. For middle school Lindley Junior on Spring Garden was where the neighborhood kids attended. The ONLY high school for miles was Greensboro high school (Grimsley).

She did well in school, very social, straight A's and student council president. She kept her distance from the troublemakers that prowled the high school, smoking and stealing the hood ornaments off of cars.

...continued on page 7

Re-districting?

You may have heard some discussion on a recent redistricting in the city of Greensboro. The City Council districts were redrawn. This was done to accommodate population changes in the last few years and to attempt to keep Greensboro in compliance with Federal guidelines for the next ten years. Both voting precincts that comprise Lindley Park were and are still in the heart of District 4

Redistricting occurs on a national level every ten years. The census data is used to ensure that each citizen has equal vote. Thus determining the number of Congressional seats that will represent each state. At the same time every state, county and city in the US are using the same census information to ensure that each of their districts have similar numbers of citizens.

Presently, there are redistricting plans being drawn for the State and Guilford County that may or may not effect what district we reside in. The County Commissioners have also mentioned changing the number of Commissioners on the Board from nine to seven. Only time will tell.

Music in the Park

Mark your calendars now for Music in Lindley Park

As part of the MUSEP Series (Music Sunday Evening in the Park) sponsored by The Music Center, City Arts of Greensboro, Lindley Park will again be the site of two concerts. The concerts are:

July 17 - Classical and Pops with the Philharmonia of Greensboro

The Greensboro Philharmonia is a volunteer group of orchestral musicians, both non-professional and professional. There are approximately 60 members in the ensemble made up of strings, woodwind, brass, and percussion players.

August 28 - A Double-feature: Latin with West End Mambo and Variety, Rock & Roll with the Rob Massengale Band.

Formed in 1999, West End Mambo is comprised of musicians from North, South and Central America as well as the Caribbean. This nine piece band performs a fiery mix of classic salsa from bolero and rumbas to guaracha and son montuno. Their repertoire includes original orchestral salsa

...continued on page 7

General Meeting Minutes - May 31, 2011

Chair Lauren Smith opened the meeting at 7:08 p.m.

Treasurer's Report: Palmer McIntyre presented the Treasurer's Report. The current balance of cash on hand is \$2,619.69. She noted that the Executive Board had recently approved a one-time \$500 donation to Lindley Elementary School for restoration of the auditorium.

New Business: Neighbors were encouraged to keep an eye on any possible redistricting of the neighborhood. It is hoped that work on the water lines in the neighborhood will soon be coming to an end. Elizabeth Link noted that the City was contracting out work on potholes. She encouraged all to call 373-CITY for concerns of this nature.

Special Guest: Lindley Park Recreation Center Director Casey Chesson was introduced. She provided brochures and an overview of the many programs available at the Center. She also invited input as to programs neighbors would like to see incorporated. Among the programs she highlighted were Zumba (workout program for all ages done to music), Etiquette programs for children, Karate, Kinderdance, Afterschool Programs, Tiny Tots Programs, A.H.O.Y. (Add Health to Our Years) for seniors aged 55 and above, Swinging Stars Square Dancing, and a variety of Summer Day Camps. She noted that Lindley Pool will open soon and gave the number to call for information about that facility (299-3226). The Greensboro Boxing Club is located adjacent to Lindley Park Recreation Center. The program there includes weightlifting and weight reduction. Dee Mims, a participant at the club, will soon be going to Colorado Spring, CO, to attempt to qualify for the Olympics. Appreciation was expressed to Casey Chesson for meeting with the Association.

Zoning Committee: Bill Schneider reported no news but noted that downtown apartments seem to be booming. A request for rezoning will be made should more apartments be considered for our neighborhood.

Spring Fling: By all accounts, Spring Fling was a resounding success.

Public Safety: Patti Eckard reported Naomi Galbraith had contacted her with a concern about the bamboo growing on Northridge Street. Because bamboo is considered an ornamental plant, the City has not been responsive to this concern. Some sidewalks in our neighborhood still need attend. Neighbors are encouraged to keep both cars and homes locked.

District 4: Gertrude Beal reported that nothing has been done about the overgrown lawn on Berkshire Street. This was reported more than a month ago but the City is behind on their mowing.

Newsletter: Lauren Smith announced that Larry Barnes is now Newsletter Coordinator. Deadline for materials to be received is June 8. It is hoped that pictures from the upcoming Locks of Love fundraiser might also be included.

Newsletter Advertising: Patti Eckard reported that one advertiser Lindy's Goodies, a gluten-free bakery, had already gone out of business.

Greensboro Neighborhood Congress: Susan Taaffe, who represents our neighborhood with the Greensboro Neighborhood Congress, commented on a current bill (House Bill 554) in the NC House that will make RUCO (Rental Unit Certificate of Occupancy) illegal. RUCO has been lauded as an effective tool for forcing landlords to bring substandard housing up to code. Neighbors are encouraged to contact Pricey Harrison (NC House District 57) to express concerns about this. Pricey Harrison is in favor of RUCO. Susan Taaffe also commented on NC Senate Bill 731 - Zoning/Design and Aesthetic Controls. This bill clarifies when a municipality or a county may enact zoning ordinances related to design and aesthetic controls. This has been sent to the NC House for approval and it may be beyond the time when this might be opposed. She noted the next meeting of the Greensboro Neighborhood Congress will be June 9 at the Central Library. Lindley Park is entitled to two more representatives should neighbors have an interest in this. She will also supply information to the newsletter. It was noted that the City is considering tobacco-free parks.

Door Prizes: Two door prizes were given.

Next Meeting: The next general meeting will be September 27, 7:00 p.m.

The meeting was adjourned at 7:58 p.m.

Submitted by Gertrude Beal (Secretary Pro-tem for Diane Gackenbach)



***Nobody Knows Your Neighborhood
Better than your Neighbor!***

For exceptional Service, Knowledge,
Integrity and Results—please give me a call.

**Patti Eckard, REALTOR® CRS, GRI, SRES
RE/MAX REALTY CONSULTANTS
2621 Beechwood St.
Tel: 339-5927
Email: Patti.Eckard@gmail.com
Website: www.PattiEckard.com**



WalkerFEST 2011

Celebrate The Lindley Park Neighborhood with your family, friends and neighbors at this year's first annual street festival known as WalkerFEST. WalkerFEST will be held Saturday, July 9th, 2011 from 1:00 to 8:00 on the corner of Walker and Elam Avenues.

To the organizers of WalkerFEST, Lindley Park, with the restaurants and bars on Walker Avenue, seemed like a perfect location for a street festival. "We are so excited to organize a street festival in Lindley Park. The Walker Avenue area has so many fantastic local businesses and we are thrilled to be able to plan an event that will bring new and familiar faces out to a great part of Greensboro," says co-organizer Georgia Frierson. With the support of the businesses on Walker Avenue, the festival will be a fantastic addition to an already vibrant, diverse area.

This is not the first time the organizers of WalkerFEST have put together a street festival. The three long time friends, Daniel Yount, Seth Barden, and Georgia Frierson, also organized last year's Tate Street Festival, one of Greensboro's oldest street festivals, and have started an event planning group known as Live, Original, Local that aims to bring live music, original art & craft vendors, and local business together for events. The three are already gearing up for September's Tate Street Festival again even while they are finishing the preparations for WalkerFEST.

This year's WalkerFEST will feature five performing artists including three Greensboro bands: The Brand New Life, The Bronzed Chorus, and Sam Frazier & The Numbers. The featured performer this year is Senegalese griot and kora player Diali Cissokho, who performs traditional songs from West Africa. Finally, Jonathan Scales Fourchestra, from Asheville, NC, led by Scales on the steel drum, brings a jazz/fusion sound to the mix.

There will also be many original art and craft vendors set up along Walker Avenue. Vendors at WalkerFEST will have jewelry, handmade clothing, woodcrafts, ceramics, and many other interesting and exciting handmade goods.

In addition to the music and vendors, the restaurants and bars on Walker Avenue are excited to participate. WalkerFEST will provide an excellent opportunity for new (and old!) patrons to experience the businesses on Walker Avenue. Many of the restaurants and bars are planning food and drink specials for the day of the festival.

"We want to extend a personal invitation to the residents of the Lindley Park neighborhood to join us at WalkerFEST this year," says Frierson, "We want the whole neighborhood out in the street having a great time!"

For more information about WalkerFEST, please visit www.liveoriginallocal.com.



**Sterling Silver
Amber
Turquoise
Gift Cards**

330 Tate Street
336.574.3889
Mon-Sat 10-6:30



Giving You a Change of Space!

Residential Interior Painting

Owner always on site!

Call Anita or Sharon
336-509-1031
theladies@anewviewpaint.com

Is your supplement doing what it says it will?

Looking for better results and improved health? Our natural supplements can help.

Reliable, natural food supplements improve immunity the old fashioned way, by working at it.

Free Consultation!

Para Natura products are:

- Traditional AND scientifically investigated
- Concentrated and prepared under strict European regulations & quality control standards
- Easy to order online at www.paranatura.org or by phone at 336-292-5661
- Delivered at no cost to you in Lindley Park

Learn more at www.paranatura.org & paranatura.ning.com

Visit us on Facebook  

<<<<PN Year of the Green Tea>>>>

Meet a Neighbor

(continued from page 4)

Of course, unlike today, there were few cars in the high school parking lot. If you had a car, you were something special.

She also had many household chores, including feeding the chickens. Yet there was one rooster that kept attacking her, eventually causing her mother to wring its neck and have it for supper. Her father also took care of a Victory Garden on Scott Ave., hiring a man with a mule to plow up the land for planting. That was during the war effort days, when families would grow their own produce and children would collect scrap metal and grease.

They were a proud American family, her father and uncle serving proudly in the Marines (uncle) and Army (father). So, when her uncle, a pilot, wanted to visit, he flew a small plane down near her house and circled three times. As soon as her mother heard the roaring engine, she took upon her post at the sidewalk, waving a cloth diaper at him (their signal so he knew she would pick him up) then drove to the airport.

We sat on Anne's porch for quite some time talking of old times in Lindley Park, but concluded some things change but so many stay the same.

Written by Ellie Little
Interviewed by Carrie Little

Music in the Park

(continued from page 4)

arrangements which they have performed with the Winston-Salem and Greensboro Symphonies.

The Rob Massengale Band is a creative mix of some of the area's most talented and gifted musicians. They have the ability to play the spectrum of music from the Big Band Era to today's Beach and Top Forty styles, Rock & Roll and Rhythm & Blues, Ethnic flavors and Latin rhythms, and more. Six of the eight members sing. The band is billed as one of the most versatile bands in existence today.

The location within the park is Starmount Drive at West Market Street and Wendover Avenue. Just follow the crowd! You don't have to bring a thing to enjoy these concerts but most will pack blankets or lawn chairs and a picnic supper. Admission is free. Come and be part of the fun!

Safety Tips for Lawn Care

- Before you begin, check out what you're wearing: avoid loose clothing and tie back long hair. You don't want either to get caught in chains, blades, fans, axles, or any of the other moving parts on power lawn care equipment.
- Add safety glasses to that outfit, closed-toed shoes (preferably with steel toes), and long pants. You may also want earplugs to protect yourself from the noise, but don't listen to music -- you want to hear if something goes wrong.
- Before refueling your lawn mower, make sure the engine is off and cool.
- Be careful not to spill!! 30% of the air pollution caused by power equipment comes from fuel that has spilled and then evaporated.
- Refuel outside, and not in your garage. Remember, you're working with a highly combustible substance that can explode if near a heat source, including your washer or water heater.
- Don't let your kids or pets play in the yard while using your lawn mower -- it can send rocks flying out at dangerous speeds that can easily harm them. And don't let them ride on any riding mowers, especially if under age 12.
- Take an observant stroll around your lawn before mowing and remove foreign objects such as rocks, children's toys, or even dog bones.

Courtesy of All about Lawns



**FROM YOUR FAVORITE LOCAL
Restaurants, Retail, Salons,
Entertainment and more!**

WWW.MY336DEALS.COM


**FREE TO JOIN...
START SAVING TODAY!**

Receive weekly updates of new deals
text: LPARK to: 48685

NEVER spam
STOP any time
Std msg rates
apply



MY336DEALS.COM



HOPE CHAPEL
IN THE CITY. FOR THE CITY.

a new neighborhood
church meeting at
Lindley Elementary School,
Sundays at 10:30am.

www.hopechapelgreensboro.org

Timely Tips from a Professional Gardening Expert

Ornamentals

Deadhead perennials and annuals as blossoms fade to encourage them to bloom again.
Make sure roses are well fed and continue fungicide applications to keep black spot to a minimum.
Keep chrysanthemums pinched to a height of 6 inches. This creates fuller plants that will bloom in the fall.
Mulch flower gardens for the summer to conserve moisture and control weeds.
Pick off and destroy leaf galls on azaleas and camellias.
Prune rhododendron that are just now finishing blooming.
Remove dead foliage from spring bulbs.
Mid to late June is an excellent time to propagate softwood cuttings of plants such as spirea, boxwood and azaleas.

Miscellaneous

Bats can be an important weapon in chemical free bug control.
If going on vacation, have neighbors check on your garden every few days to water if necessary.
Do not allow children to ride or drive riding lawn mowers.
Before pouring gasoline into the fuel tank of your lawn mower or garden tiller be sure to turn off engine off and allow to cool at least 5 minutes.

Pests

Continue treating the adult Japanese beetle with Sevin.
Watch for bagworms on conifers. Treat with Dipel.
Heavy rains can encourage slug problems.

Lawn

Check lawnmower blade for sharpness and sharpen as needed.
Water the turf sparingly to increase drought tolerance during summer heat.
Raise the lawnmower blade, on fescue 3 to 3 1/2 inches is best for the summer.
Let clippings fall for nutrient recycling.
Many weeds, which occur in lawns, are excellent indications of poor growing conditions.
Clover will be found in soils with low nitrogen. Ground ivy, chickweed and violets often sprout up in places too shady for grass.
The presence of moss tells of soil compaction, poor drainage or fertilizer, or excessive shade.

...continued on page 9



**MASTER
ELECTRICIAN**

30 Years Experience
Local References
Licensed, Bonded,
Insured


Our specialty: older home
repair and installation

MACK MELVIN
273-9348

**WOODWORKS
HARDWOOD
FLOORING**

Installation & Refinishing

Shea Prine
707.2919
Carol Groover
580-0978



To See All Homes Listed For Sale
In Lindley Park

Go To
www.BuyLindleyParkHomes.com



Andy Leung
336.508.1111
Andy@TeamLeung.com



*Each Keller Williams Realty is independently owned and operated.

Piedmont Global Pre-School

Fellow Lindley Parkers! A new, inspiring place for children is coming soon to our own backyard... Piedmont Global Preschool and Child Care. Nothing feels better to me than living in a close-knit community filled with people from different backgrounds. My husband and daughter and I have found that in Lindley Park. Valuing diversity and nurturing meaningful relationships with those around us are things that my husband and I want to instill in our young daughter. As a parent and part-time worker outside of the home, I want my daughter to be cared for by people who have a similar vision of inclusion, community, and diversity. I have had the privilege of being a part of dreaming up what that would look like for children. And after many, many months of planning and dreaming, I'd like you all to be the first to know about a new preschool and child care center opening soon near Lindley Park.

Piedmont Global Preschool and Child Care will offer families quality care and flexible enrollment options. Opening in August 2011, children may attend 2 days/week, 3 days/week

or 5 days/week, full-time, part time, or after-school. Highly qualified teachers will serve ages 1 through 7 in three unique and inspiring classrooms. The program will include hands-on Creative Curriculum and comprehensive child development assessments at no additional charge. Tours and pre-enrollment begin in July. Visit the website at pgpreschoolandchildcare.com. You are also welcome to call me, Stephanie, and get more details. 336-207-0319. My husband and I have chosen this school for our daughter because it will be like an extension of our neighborhood that we already love. If you need child care or a great preschool, PGPC would love to call you part of their small, growing family!



**Piedmont Global
Preschool & Child Care**
Inspiring little children to think big

3907 W Market St. Suite B
Greensboro, NC 27407
(336)772-0004

www.pgpreschoolandchildcare.com

Garden Tips (continued from page 8)

Edibles

Remove sucker growth from the base of fruit trees.

Rake and discard any fallen fruit from underneath fruit trees to discourage insects and diseases.

Keep vegetable garden looking neat by applying a layer of mulch which will hold weeds in check while, keeping the moisture in the soil. Continue to side dress (fertilize) vegetables that have just begun to set crops.

Keep vegetables well watered. Water thoroughly and deeply with 1 inch per week.

Renovate June bearing strawberry beds.

Fertilize strawberries and water regularly to promote new growth.

Plant another crop of green beans for a late season crop.

Pinch herbs to keep bushy and fresh with new growth.

The best time to harvest herbs is just before flowering when the leaves contain true maximum essential oil.

Karen Neill, Extension Agent
Agriculture - Urban Horticulture
Guilford County Cooperative Extension
336-375-5876

Help Spruce Up Lindley Elementary

Hope Chapel is sponsoring a beautification work day at Lindley Elementary School on Saturday, July 23, from 9 a.m. to 12p.m., followed by a cookout with live music and water games. All are invited! Contact Michael Van Patter, 207-1977 or michaelvanpatter@gmail.com

This project is part of a 2nd annual week-long series of service projects organized by Hope Chapel, called OUR GSO. Last year volunteers logged over 700 hours of time with five local organizations.

For more information about other projects happening during the week of July 18-23, please visit, www.ourgso.com.

Worship with us
Sundays at 11 a.m.
Gathering to worship ...
Departing to serve.

Lindley Park Baptist Church

always shoot for the moon!

PEPPER MOON CATERING

Corporate Events | Theme Parties | Wedding Receptions
Rehearsal Dinners | Buffet Dinners | Plated Dinners | Box Lunches
Barbeques & Picnics | Full-Service Bars | Hors d'Oeuvres

1068 Boulder Road | Greensboro NC 27409
Phone 336.218.8858 | www.PepperMoonCatering.com

More Pictures from Spring Fling



Tate Street Coffee House

Gourmet Coffees,
Excellent Espresso Drinks,
Delicious Desserts

Join us for Sunday morning jazz

334 South Tate Street
Mon.-Sat. 7 am - 11 pm
Sun. 8 am - 11 pm

*Owned and Operated
by Your Lindley Park Neighbor*

Gene's Barber Shop

2412 Spring Garden
299.8669



Established 1956.
53 years of service to the
neighborhood.
Walk-ins welcome or call for
appointment.
Tues.-Fri., 8 am - 6 pm
Sat. 7:30 am - 3 pm

At your service:
Frank Dorrity, Ben Ma,
Jim Nelson, Bill Young,
John Ma

**INDEPENDENT
PLUMBING**

LOCAL
OWNER OPERATED

LICENSED
INSURED, BONDED

CALL 336.239.9044

No job too big,
No job too small

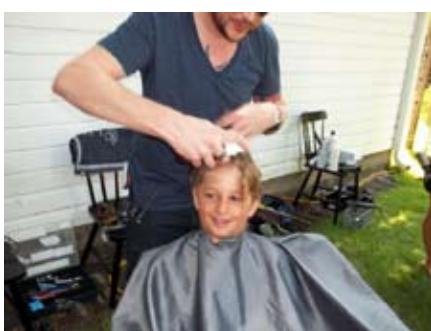
Lindley Park Wigs for Kids

We all know the Avett Brothers and in August of 2010 Seth Avett and Mike from Cracker Farms posted a video showing them getting all of their cut off. They did it for an organization called Wigs for Kids. Wigs for Kids accept donations in the form of hair. They use the hair to help out children recovering from chemotherapy, radiation and other debilitating medical circumstances. Otto Shroth, son of Anna and Pete Shroth saw the video, went to his parents and told them "I wanna do what Seth and Mike did." If you know Otto you know he has hair down to his shoulders and it would take a lot of courage to lop it off. With his dad's help they organized a Wigs for Kids day. So on June the 12th, at their house , they hosted Bradley, Andy and Jay from Boho Salon in downtown Greensboro along with Shiri from Salon Madusa, also downtown Greensboro. Together they cut nineteen heads of hair and probably captured at least twenty feet of natural hair. Both kids and adults got haircuts.

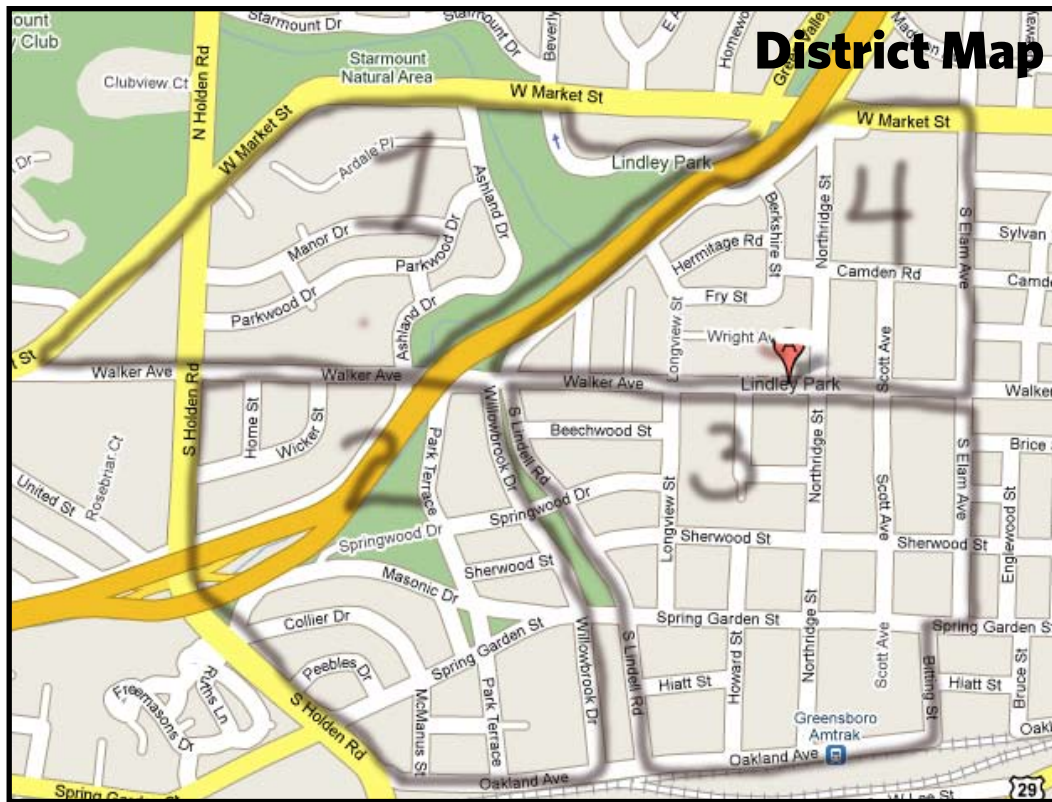
The first young lady to step up was Nadia Herndon, a very pretty young lady with long pretty hair. About 30 minutes later she was a very pretty little girl with a new bob. Then the twins Jacob and Sammy Hoss got in the chairs and went from long hair to Sammy, with a crew cut and Jacob, with about two inches on his head. The first adult was Gwenn Errickson with beautiful long red hair. Thirty minutes later she also had a cute bob.

Otto disappeared for about two hours and finally, at about two o'clock, he climbed into the chair. Thirty minutes later a crowd gathered to see the new improved Otto. A big change and he looked great.

What an amazing lesson to learn. Kids helping kids. Thanks Otto for a terrific afternoon in Lindley Park.



From top, left to right: 1) Nadia - Before, 1st cut of the day. 2) Jacob - one of the twins, before. 3) Sammy - the other twin, before. 4) Jacob - getting it cut. 5) Nadia - after. 6) Gwen Errickson - 1st adult, before. 7) Sammy - also getting it cut. 8) Jacob - almost done. 9) Seth Avett of The Avett brothers - cut his hair in 2010 and inspired Otto to do the same for Wigs for Kids. 10) Otto - before. 11) Otto - after.



Lindley Park Neighborhood Association Supporters, 2011

With neighbor support, the association is able to sponsor the annual Easter Egg Hunt, Spring Fling, Fall Fest, and Holiday Luminaries. Your contributions also helped launch our Lindley Park Web site.

- | | | | |
|-----------------------------------|-------------------------------|-------------------------------|-----------------------------------|
| Greg & Allison Chabon | Bill & Patti Eckard | Jerry & Ann Baumgartner | Nancy Schmidt |
| Tony Horney & John Neal | M. Gertrude Beal | David & Jane Byrd | Stephen Johnson & Marnie Thompson |
| Annie Cahill & Neil Swenson | Palmer & J.P. McIntyre | Tim, Theresa & Chris Byrd | Arch & Virginia Nash |
| Allison & Bobby Greiner | Bill & Michelle Schneider | Mrs. Porter Gibson | Wendy Helton |
| Amy Conley | Carrie & Randy Little | Susan Taaffe & Henry Rudisill | Azalea Yow |
| Peggy Parham | Martin Swindell | Dyan Arkin & Ken Snowden | Cathy Branscom |
| Rebecca & Michiel Van der Sommen | Sheila Duell & Robert Bellomy | Lauren Smith | Ginny Gaylor & Joe Barvir |
| Mark Toole & Mary Herbenick Toole | Mary Ann & David Murray | Kerry Dumich & Joan Glynn | Kerry Dumich & Joan Glynn |

2011 LPNA CONTRIBUTION FORM

Now's a good time to make a contribution to your neighborhood association. Please fill out the form and mail it with your check to the address listed below. If you'd like to be involved with any of the committees, or activities, please check your preference.

Name(s): _____ Address: _____

Email: _____ Home Phone: _____

PLEASE CHECK YOUR INTEREST(s):

Environmental Issues FUN-raising Park Preservation Website PublicSafety/Public Words (speeding, burglary, sidewalks, etc)

Zoning Issues Neighborhood Loing-Range Plan Social Activities (spring, fall events & Christmas Luminaries)

Newsletter Volunteer — help distribute in your area

\$\$ household contribution enclosed (\$15 suggested) \$ _____ Date: _____

Please make checks payable to LPNA and mail to: LPNA c/o Palmer McIntire, 622 Scott Ave. Greensboro NC 27403