



JANUARY/FEBRUARY 2015

Upcoming Events PG 2

Home Heating Tips PG 3

Gardening Classes PG 4

Lindley Park Holiday PG 4

LPNA General Meeting PG 5

Lindley Park T-Shirts PG 6

Lindley Elementary News PG 6

Pet Corner PG 8

LPNA Contributors PG 12

COLUMNS

THE LINDLEY PARK NEIGHBORHOOD ASSOCIATION NEWSLETTER
www.lindleyparknc.com

LINDLEY PARK CORNER - THEN AND NOW, A LOOK GLIMPSE INTO THE PAST.



NEIGHBORHOOD ASSOCIATION OFFICERS

CHAIR

Stephen Johnson
stephen@elamgardens.com

VICE CHAIRMAN

Adam Spivey

SECRETARY

Anne Embrey
aeembrey@gmail.com

TREASURER

Blake Sagar
bsagar@cfmccpa.com

PARLIAMENTARIAN

Gertrude Beal
gbeal@guilford.edu

PUBLIC WORKS

Virginia Driscoll
v@yahoo.com

SOCIAL CHAIR

Josh Sherrick
joshuasherrick@gmail.com

COMMUNICATIONS COMMITTEE

NEWSLETTER CONTENT COORDINATOR

Beth Biester
bethbiester@me.com

NEWSLETTER ADVERTISING

Diane Gackenbach Smith
dggack@yahoo.com
337-7327

NEWSLETTER LAYOUT

Triad Pawprints
Jennifer Dunn
jennifer@triadpawprints.com

Jared Irusta

jared@triadpawprints.com

PARKS & REC.

Barry Goldman
goldmab@gcsnc.com

PUBLIC SAFETY

Bill Eckard
bill@billeckard.com

WAYS & MEANS - OPEN

ENVIRONMENTAL

Elizabeth Link
ezlink@yahoo.com

GSO NEIGHBORHOOD CONGRESS REPRESENTATIVE

Susan Taafe
susantaaffe1@gmail.com

ZONING

Bill Schneider
bschneider@peppermooncatering.com

NEWSLETTER DISTRIBUTION

Joyce Eury
joyceury@gmail.com

DISTRICT 1 REP

Mary Alice Austin
austingreensboro@aol.com

DISTRICT 2 REP

Max Armfield
marmfield@elon.edu

DISTRICT 3 REP

Rebecca Medendorp

DISTRICT 4 REP

Gertrude Beal
gbeal@guilford.edu

EX-OFFICIO CHAIR

Larry Barnes

Bill Eckard

bill@billeckard.com

Lauren Smith

smellyfour@yahoo.com

NEWSLETTER ADVERTISING

The Columns is published by the Lindley Park Neighborhood Association. More than 1200 households receive hand-delivered copies. Issues are also posted on our website. Copies can be picked up at several neighborhood businesses. Publishing/Distribution is February, April, June, August, October and December.

Deadline for ads is the 10th day of the month prior to publication. Ad cost is \$35 per issue. Ad size is 1/6 of a page or 2 1/2 inches by 5 inches. The editor of the Columns reserves the right to edit as needed.

For more information, or to place an ad, contact Diane Gackenbach at dggack@yahoo.com or 337-7327.

“Thank You “ To Our Advertisers!

The Columns advertisers make it possible for the newsletter to be published, distributed to more than 1200 households and available online. Please frequent these establishments and let them know you heard about them in The Columns. Their support is so important and very much appreciated!

Need An Extra Copy?

Lindley Park Columns is available at a number of local businesses. Stop by one of these shops and grab a copy.

Bestway - Walker Avenue

Gene's Barber Shop – Spring Garden Street

Lindley Rec Center – Springwood Drive

Spring Garden Bakery & Coffee Shop - Spring Garden Street

Common Grounds Coffee Shop - Elam Avenue

Hops Burger Bar - Spring Garden Street

“LIKE” LINDLEY PARK

If you're a Facebook user, join the 1,258 others who have “LIKED” the neighborhood page, www.facebook.com/LindleyPark It's a quick and easy way to post a note, ask a question, share photos, and stay up-to-date.

PLEASE SUPPORT THE LPNA

Listed on page 12 of the Columns are members of the LPNA that made a financial contribution to our Association.

Your contributions help sponsor our wonderful neighborhood events, such as the Easter Egg Hunt, Spring Fling, Fall Fest and Holiday Luminaries. For only \$15 a year, you can help make our neighborhood association the best it can be! Please fill in

the contribution form on the last page of this newsletter.

The Columns cost around \$585.00 per issue to print 1250 copies. We need to support those that advertise. A huge thank you goes to the folks that deliver the newsletter to every door. It is the neighborly involvement that makes Lindley Park so great.

LINDLEY PARK E-LIST

Do we have your email address? If not, we need it! You'll receive timely neighborhood reminders and announcements in addition to being the first to receive the “Columns” newsletter in living color!

And don't worry about security, we only use the e-list for neighborhood news so it is not distributed to any other groups. Email us at lpnagso@gmail.com to be included.

IDEAS FOR NEWSLETTER

Do you have an interesting story to tell? Know something about our neighborhood history? Write us about it! We are always interested in hearing from our neighbors. The Columns serves as glue to connect us to one another- and we want to hear from you!

Please email submissions to Jennifer Dunn at jennifer@triadpawprints.com. The news letter is published every-other month, with deadlines on (or about) the 1st of February, April, June, August, October, and December.

CLOSING THE OPEN WINDOW IN YOUR HOME

By GARY SILVERSTEIN

What would you do if you noticed an open window in your home in the middle of winter? You would probably close it. You would be motivated by the desire to keep your home comfortable, keeping your warm conditioned air inside and the cold winter air out. We all go through great effort and expense to be warm and comfortable in these chilly winter months and the idea of letting large amounts of unconditioned air inside our homes is unthinkable. In fact, most homes have enough small cracks and crevices which cumulatively can be equivalent to a 3-foot-by-3-foot hole. These holes are constantly drafting expensive heated air into attics, crawlspaces and to the outside while drawing cold air into living spaces. Because most of these cracks and crevices are small openings spread throughout the structure, they can be very difficult to find. You may not even know they are there. So where are these holes? Whether you live in a 1,000-square-foot starter home or a 10,000-square-foot mansion, each structure has its own unique issues. Yet most homes also have similarities. Time and time again leaks appear in the same places in different houses. Just as a computer technician

learns through experience of repetition how to resolve computer viruses, and a car mechanic similarly recognizes how to get your car running, an experienced home weatherization technician can locate your leaks and knows how to fix them. A good place to start is in the ceiling of the top level of your conditioned area. Hot air rises and will escape into the attic above. The attic tends to draw air into it in the same manner a chimney pulls smoke up its flue. The ceiling that separates the conditioned area from attic space contains lighting, fans, smoke detectors, HVAC supplies and returns, and an attic access. Each is a penetration through the ceiling into the attic, and each represents a place where warm air is leaving your living space. All these places should be identified and sealed. Next, examine your fireplace. We can all imagine the quantity of air that moves through a chimney when the damper is open. The chimney acts as an active conduit for your conditioned air to flow to the outside. There are several strategies for fixing this superhighway of escaping air, including installing top-mounted dampers and chimney balloons. The potential carbon monoxide issues make the safe repair of the fireplace of primary importance — you don't want to create a health hazard for yourself or a future homeowner. Please consult a professional. Your crawlspace has penetrations overhead that also need sealing. Often, by closing the

LPN 100 is a multi-year project that will help build interest and excitement leading into Lindley Park Neighborhood's 100 Year Anniversary in 2017. The goal of the project is to generate ideas and insight from residents on how they would like to see the neighborhood grow and develop, to leave as wonderful a neighborhood to future residents as was left to us.

To do this LPN 100 will transform 6-8 individual sites around Lindley Park, one at a time and for ONE DAY ONLY, over the next 2.5 Years. The concept of transforming a site for one day is called a “Pop Up.” This concept has been used in both restaurant and retail settings, but recently it has also been used in the Community Development setting. The idea is to take a blighted, underused, or overlooked area and transform it for a day into a place that people would visit and use, a destination. The pop-ups will give people a vision of what a place could be and not what it is.

Stay tuned as more information about LPN 100 will be made available as the project progresses. If you would like to be involved, please contact either Stephen Johnson at stephen@elamgardens.com or Adam Spivey at nsipvey@elon.edu

holes in the ceiling of the top level of your home, the holes in the crawlspace become less active because air is not being pulled out through the attic any longer. Nevertheless, these holes are a source of unwanted, often dank, unconditioned air entering your living area. Bathrooms are often the cause of many of the largest crawlspace holes. Locate the plumbing from below and seal all associated air gaps. Heating and air-conditioning equipment also can be the site of holes through the crawlspace. It is best to have a weatherization professional or an HVAC contractor seal these. Keep in mind that this is a sampling of typical home leaks, not a comprehensive list. A certified Weatherization contractor, trained to identify and create the most effective energy reduction strategy, is the best choice to make the greatest improvement in your house. Your home will be cozier with fewer temperature disparities from room to room. There is a handsome payback from your reduced utility bills. And you will be pitching in to improve our environment.

Gary Silverstein is owner of Energy Reduction Specialists of NC, Inc. He can be reached at gary@ersofnc.com or 336 643-9199

UPCOMING EVENTS

FEBRUARY 28
Lindley Elementary Garden Work Day

MARCH 8
Daylight Savings Time Begins

MARCH 26
Easter Egg Hunt

APRIL 22
Earth Day

APRIL 24
Arbor Day

MAY 16
Spring Fling



EARTH DAY IS APRIL 22

Spend a day caring for and celebrating the planet Earth on April 18 with these two City events: Greensboro Beautiful's Great American Cleanup, a city-wide litter initiative, from 9 am to 12 noon throughout the city and Earth Day Celebration from 1-5 pm at Kathleen Clay Edwards Family Library, 1420 Price Park Dr. featuring exhibits, entertainment, and children's activities. Learn more about these free events

at www.greensboro-nc.gov/EarthDay.





GET READY FOR SPRING- ATTEND A "GROWING THE GREEN WAY" CLASS

This popular environmental education series offers Guilford County citizens a variety of landscaping and gardening classes that can help save time and money. Classes are free but registration is required due to limited class size. Reservations may be made by calling Pam Marshall at 641-2400.

The following classes occur on Sundays 4pm at the Greensboro Arboretum, 401 Ashland Dr.:

- Grow Your Best Vegetable Garden: March 1
- Native Plants: March 15
- Totally Tomatoes: March 29
- Containers for Curb Appeal: April 12
- Backyard Habitat: April 19-4 p.m.

Classes are held at other locations on different dates. Check the Greensboro Arboretum website for the full schedule: <http://www.greensborobeautiful.org/events/index.php>

LINDLEY PARK HOLIDAY

After the original date was rained out, the LP Neighborhood held the annual Luminary celebration on Saturday Dec. 13th at the Lindley Rec Center. Over a dozen neighbors of all ages came out to work together and distribute over 1300 white luminaries throughout the streets surrounding the park. It was great seeing so many neighbors walking the streets and enjoying this beautification project all evening long. Warm kudos go out Mr. and Mrs. Gorham for continuing their long tradition of luminary involvement, and to all the others who helped with this large event.



Gene's Barber Shop 2412 Spring Garden 299-5669



Established 1956.
53 years of service to the
neighborhood.
Walk-ins welcome or call for
appointment.
Tues.-Fri., 8 am - 6 pm
Sat. 7:30 am - 3 pm

At your service:
Frank Dorrity, Ben Ma,
Jim Nelson, Bill Young,
John Ma

LINDLEY PARK NEIGHBORHOOD ASSOCIATION - GENERAL MEETING

MINUTES - 1/27/15

The meeting was called to order at 7:08pm
The November minutes were approved as submitted.

Treasurer's Report - Blake Sagar - Annual Report submitted, everything is in line with the budget; one overage for the Spring Fling because we asked the band to play longer. Total 2014 revenue: \$7,883, total expenses: \$7,565.83, ending cash: \$4,282.29.

Question about fee from the November meeting was resolved with the fee being paid back.

New Business - Welcome everyone, this is the meeting we elect new board members. Highlights of 2014 - the Columns were repaired! Thanks for all the effort that went into this project. We also had good social celebrations.

Old Business - Chemistry Nightclub Request: Larry gave a quick summary and read our stance going into the meeting, "We support Drew Wofford in his attempt to improve the facility by adding additional space and bathrooms for his patrons. However, we do not support the rezoning of the parcel to Heavy Industrial and recommend Mr. Wofford and Mr. Isaacson work with the City to make changes without having to move to Heavy Industrial. As well, if the capacity of the club does increase, we recommend a more permanent solution to parking. As discussed, we appreciate any work done to the facade of the property to be inline with the Spring Garden Overlay."

Mr. Isaacson then addressed the members; in summary - due to the location of Chemistry Nightclub and it's proximity to residences and parks, it is nonconforming and Drew is unable to make any changes or improvements. He wants to add bathrooms, especially women's bathrooms, and increase the capacity from 160 to 299. The only option available from the City is to be re-zoned Heavy Industrial - Mr. Isaacson and Drew Wofford did not select that designation, it is the only one available due to the location. Since taking over the space, Mr. Wofford has been a good neighbor to Lindley Park, there is little trouble at the nightclub and he likes being part of the neighborhood due to our acceptance of a gay bar. If the zoning is not changed and improvements can not be made, and if the nightclub continues as is, they may be shut down. They would have to tear down the stage and the other changes made to the outdoor space. However, if the zoning is not approved, most likely Mr. Wofford would leave the space. There is concern about the future of the space if it is re-zoned and at some point Mr. Wofford leaves. The zoning will be limited to the space being a bar or nightclub so a future owner would need to adhere to the limitations. And they would have the capacity of 299. How easy would it be to have the conditional usage changed?

It's the same process as re-zoning. How do the neighbors feel? Drew has contacted the neighbors, given out his cell number and encouraged them to call him with problems or concerns. So far, no one has contacted him. How does this affect the Neighborhood Plan? The land use does not change but the plan would show the tract as changing from neighborhood commercial to mixed use commercial.

What does the City think? They are waiting to hear from the neighborhood.

Mr. Isaacson and Mr. Wofford left at that point and the membership engaged in general discussion of the plan. It really comes down to the future. The capacity of 299 is high. Stephen and Elizabeth talked with neighbors, some concern about parking, and students at the nearby apartments said the noise on the weekend can be a distraction. Most neighbors were fine. The first year they were open they had 35 calls to the police and last year they had 12 - that shows an effort being made to run a safe club. If Chemistry pulls out - who might come in? If the zoning is changed, how might that impact future development around the area? Straw Poll: most attending members in favor. Discussion continued. Even while Chemistry has been nonconforming, they have expanded twice under notice of violation. This is our 3rd meeting about this topic and in all three meetings we are generally supportive of Drew Wofford with an underlying concern about the future. A motion was made by Susan to decline the request to change the neighborhood plan. Stephen seconded it. A vote was taken and the majority supported the motion to decline. We updated our stance to the following; "While we support Drew Wofford in his attempt to improve Chemistry Nightclub, we do not support a change to the Lindley Park Neighborhood Plan nor do we support the rezoning of the parcel to Heavy Industrial."

Committee Reports

Zoning - Bill Schneider - nothing other than the Chemistry request

Public Works - Virginia Driscoll - nothing to report

Social Committee - Josh Sherrick - working on dates for the Easter Egg Hunt and Spring Fling.

Communication Committee - Anne Embrey - working on a transition of the Columns from Jeri and Jessica (thank you for your excellent work!) to Jennifer and Beth of Triad PawPrints.

Parks & Rec - Barry Goldman - no report

Public Safety - Bill Eckard - Neighborhood Watch program continues to expand - now on Collier and Wright Ave. Awareness is good.

Ways & Means - open - no report

Environmental - Elizabeth Link - Elizabeth will work with the City to get the park trees

replaced. Larry gave an update on the property at Holden and Hobbs - the developer is taking 60 days to submit a plan and the Starmount Neighborhood group is getting geared up. Virginia mentioned the potholes leading into the Rec Center - circled in white but not fixed. She will track this down first through Parks & Rec.

District Reports

District 1 - Mary Alice Austin - no report
District 2 - Max Armfield - no report
District 3 - Patti Eckard - two new babies on Beechwood!

District 4 - Gertrude Beal - no report

Newsletter - Jeri Henderson / Diane Gackenbach - Good work on Columns! The ads have been great too! Also working on a way to thank the group who distributes the newsletter - more to follow.

Greensboro Neighborhood Congress - Susan Taafe - The City is hosting a public meeting for the 2015-19 Consolidated Plan on 2/4 from noon until 8:30pm at the Cultural Arts Center. The next GNC meeting is 2/12 from 7-9pm - they will focus on the Introduction to Neighborhood Plans. On February 19th the League of Women Voters will host a meeting from 6-8pm at the Historical Museum to discuss the proposal to decrease the number of City Council members.

Adam Spivey gave an update on the 2015-16 Pop-Up Events - to highlight opportunities in our own neighborhood. These events give people an idea of re-investing in the neighborhood. They will be working to raise money - one idea is to have elementary students design a t-shirt that can be sold. The Pop-Up Events will lead up to the Centennial Celebration. Patti Eckard gave an update on the Centennial Celebration - working on getting long-time members and past chairs to participate in planning. Using the Pop-Ups to draw attention. We will also take a look at updating our goals from the 2004 Neighborhood Plan and setting new goals. We'll be looking for ways to pull the whole neighborhood together.

Elections: Stephen Johnson was nominated as Chair, Adam Spivey was nominated as Vice Chair, Blake Sagar was nominated as Treasurer, Anne Embrey as Secretary. All were approved. District Reps: District 1 will remain Mary Alice Austin, District 2 is open, District 3 will be Rebecca Medendorp, District 4 will remain Gertrude Beale. Under the new by-laws, the executive committee (listed above) will plan to set up the working groups. Because committee members are not required to be at meetings, we will also work on communication about who should attend meetings when and when not attending, what updates are needed.

The meeting was adjourned at 8:52pm.

LINDLEY PARK T-SHIRTS NOW AVAILABLE

Newly designed Lindley Park T-shirts are now available in two colors - charcoal gray and green. Both men and women sizes are available. Cost is \$12 each. If the T-shirt sales are profitable, we will consider ordering child size tshirts. The T-shirt design, created by long time neighborhood resident Larry Barnes, pays homage to our trees, the recently restored stone columns and a neighborhood that was built on tradition and survives due to dedicated and caring Lindley Park residents. T-shirt printing was provided by neighborhood residents - Beth Biester and Jennifer Dunn of Triad Paw Prints. So - when you buy a Lindley Park Neighborhood T-shirt you truly are "buying local ." We hope to have displays in neighborhood retail locations after the first of the year. In the meantime, please contact Bill Eckard - bill@billeckard.com, 632-1448 to order your shirt.



NEWS FROM LINDLEY ELEMENTARY

We are thankful for our friends and neighbors for supporting Lindley Elementary. Spring is a busy time for us! Join us for our Garden Work Day on 2/27 or help out during Garden Week in March - these are easy, quick ways to interact with the students outdoors. Helping the teachers keep everyone focused on the lesson can be a challenge when faced with all the wonderful outside distractions. Lindley Elementary was excited to learn that Greensboro is a finalist for the Say Yes program. Say Yes' Central Goal is to ensure college and career readiness at scale, sustained over the long term throughout communities. The program was first introduced in Syracuse, New York and then into Buffalo, New York. Want more information? Check out their website: <http://www.sayyestoeducation.org/> Stay tuned for updates about this wonderful opportunity. Looking for a way to be involved in Lindley Elementary? From reading buddies to lunch buddies to shelving books in the library - there are many ways to support our neighborhood school. If you aren't sure where you best fit - you may email lindleypta@gmail.com and we'll get you to the right person. Thanks for all you do all year to support Lindley Elementary!

Calendar of Events

- 2/27 - Teacher Workday, no school for students
- 2/28 - Garden Work Day!
- 3/9-13 - Garden Week
- 3/11 - Kiosco Night from 5-9pm
- 3/23-27 Spring Book Fair
- 4/3-10 Spring Break
- 4/8 - Kiosco Night from 5-9pm

TRIAD PAWPRINTS
SCREEN PRINTING

SCREEN PRINTING
EMBROIDERY
PROMOTIONAL ITEMS

20% DISCOUNT
for Lindley Park
residents and businesses.

336.543.3737
jennifer@triadpawprints.com
jared@triadpawprints.com

facebook **Triad Pawprints**

COMMON GROUNDS
COFFEE • ESPRESSO • CONVERSATION



- Custom Toy Shop (Menace Inc. Studios)
- FREE Internet
- Air Hockey & Pool Table
- Flat Screen T.V.'s with X-Box

TRY OUR KAVA TEA!

HOPS

BURGER BAR

COME & JOIN US FOR
FINE BURGERS
AND
FINE BEERS

2419 SPRING GARDEN ST.

always [★]
shoot for [★]
the **moon!**

Corporate Events | Theme Parties | Wedding Receptions
Rehearsal Dinners | Buffet Dinners | Plated Dinners | Box Lunches
Barbeques & Picnics | Full-Service Bars | Hors d'Oeuvres

1068 Boulder Road | Greensboro NC 27409
Phone 336.218.8858 | www.PepperMoonCatering.com

RESPECT OUR TREES

Pete Schroth wanted to let everyone know he has "Respect Our Trees" signs available on his front porch. They cost \$10 cash and can be picked up at 2607 Beechwood Street.



Sisters AFFORDABLE GIFTS SHE WILL LOVE
JEWELRY AND GIFTS HANDMADE AND LOCAL
FREE GIFT WRAPPING!

330 TATE ST. GSO
WWW.SISTERSONTATE.COM

Norman B. Smith
Smith, James, Rowlett & Cohen, LLP

Provider of competent, efficient and affordable legal services since 1965.

101 S. Elm Street, Suite 310
Greensboro, NC 27401
Tel: (336) 274-2992
Email: normanbsmith@earthlink.net

Devall's Cajun Cuisine
Authentic Louisiana Cooking
proudly serving our Lindley Park friends

Lunch & Dinner Specials

Great home cooked meals plus Fresh Seafood, Jambalaya, Gumbo, Crawfish, Etouffee, Steaks, Red Beans & Rice, Fried Chicken, Burgers, Muffalettas, Beignets, and the **Best Po Boys in town!**

3932 W. Market St (across from Sheetz) Tues-Fri 11am-2:30pm & 5pm-9pm Sat 5pm - 9pm
Catering - Private Events - All ABC Permits - *Delivery thru TakeoutTriad.com

\$5 off your \$25 or more meal purchase with this coupon!

LIKE US ON FACEBOOK

POST YOUR FAVORITE ITEM FOR A CHANCE TO WIN THAT ITEM FOR FREE

LINDLEY PARK PET CORNER

CAT CAVITIES

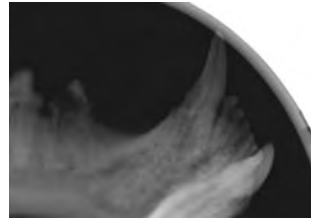
Yes, cats do develop cavities but they are very different from their human counterpart. Cavities in the cat occur when inflammation



of the gum stimulates a very destructive cell or odontoclast to attack and destroy various parts of the tooth. This condition is called a Feline Odontoclastic Resorptive Lesion or FORL. This condition is extremely painful is equivalent to orthopedic pain. There are 3 forms of FORLs. Type 1 occurs when the odontoclasts attack the tooth's enamel crown causing it to literally dissolve away. As this progresses, the crown can break off leaving painful intact roots that can abscess. Type 2 lesions occur below the gum line starting at the tooth root. With this form, the root system is resorbed, and over time the roots are replaced by bone. As the tooth infrastructure weakens, the

enamel crown will fracture and the roots are overgrown by gum tissue. Fully resorbed roots sealed by gum tissue are usually not painful; however the disease progression to this endpoint is painful. The third type of FORL is a combination of type 1 and type 2 resorption that occurs in multirooted teeth. Only intraoral x-rays can differentiate between these types of cavities. Because extraction techniques for each type are different, it is critical that pre-extraction x-rays are taken. The photographs below illustrate all 3 types of resorptive lesions. In the first picture, the small premolar tooth in the middle of the gum line has gingival tissue growing over the crown and the large fang tooth has very swollen gum tissue surround it's base. The second picture is the intra-oral digital x-ray of these teeth. These diagnostic x-rays reveal to extensive resorptive process that cannot be seen above the gum line. The small premolar has Type 3 resorption with the first root is resorbing and the second root is intact but the crown is dissolving. While the fang tooth looks normal above the gum line, the x-ray of the root shows the classic dissolution and destruction of the Type 2 FORL.

After the diagnostic x-rays have determined which teeth require extractions, appropriate nerve blocks should be performed followed by extraction of all diseased teeth. Teeth with completely absorbed roots and no functional root canal should receive a crown amputation; root atomization is also needed and bone grafts should be applied at the extraction sites. The bone grafts prevent atrophy and weakening of the jawbone at the extraction site. Teeth with crown resorption and intact roots must have the root structure removed to avoid potential abscessation. Again, only an x-ray can determine if the roots are intact or resorbed. Post-operative pain management is needed for 3-5 days. Most cats with appropriate management of dental disease and pain management are eating within 3 hours post-op.



FEBRUARY IS RESPONSIBLE PET OWNERS MONTH

The following tips will help keep your cat safe, healthy and happy:

- Cats should be housed inside. Outdoor activity can be a useful distraction but should be limited to supervised activities. Your cat will be protected from predators as well as other dangers such as cars, dogs and malicious people. Your cat is also less likely to be exposed to infectious diseases and/or toxins. In addition, your cat will not be hunting songbirds or other small animals if housed indoors.

- All cats require regular home care. Daily feeding, fresh water and clean litter boxes are necessities. Scratching posts, perches, beds or other resting places, and toys are also important for meeting your cat's basic needs.

- Cats require regular veterinary care for routine examinations, vaccinations, dental care, and more. Plan on visiting your veterinarian at least once to twice a year. More frequent visits may be necessary for cats with chronic illnesses. Responsible cat owners spay or neuter their cats.

- Cats are creatures that can hide symptoms of illness quite well. Any deviation from the

norm, no matter how subtle, should prompt a consultation with the veterinarian. Responsible cat owners have an emergency plan in place. That plan can be quickly implemented and it includes the family cat. A good emergency plan includes knowing where you will go in the case of an emergency and making certain that your cat is welcome there also. An emergency kit and first aid kit should be available, pre-packed, and easily accessible.

The full article is available at <http://www.petmd.com/blogs/thedailyvet/houston/2013/feb/7-tips-for-being-a-responsible-cat-owner-29833>



SPRING SPORTS LEAGUE REGISTRATIONS NOW OPEN

The Greensboro Parks and Recreation Department is hosting baseball registrations through February 27 for kids ages 4-14 (based on age on April 30) for its three baseball leagues. Leagues are broken up into Bitty Ball (ages 4-6), Coach Pitch (ages 7-8), and three for Youth Baseball (ages 9-10, 11-12, and 13-14).

Registration takes place from 9 am to 4:30 pm Mondays through Fridays at 1001 Fourth St. Parents must show their child's original birth certificate and PAYS card when registering.

Tu Much Beauty Parlor
2414 Spring Garden St

336 292-1898

OPEN 7 DAYS A WEEK
WALK-INS WELCOME

SUN-MON apts 12p-6p
TUES-FRI apts 8a-8p
SAT apts 8a-7p

Total Hair Care for Men, Women, & Children
NAILS, WAXING, & FACIAL SERVICES
TUES & WED \$40 Perms & Relaxers

24/7 BOOK ONLINE
www.tumuchstyles.com

Herford says **Attention: All Cats & Dogs!**

It's time to clean those pearly whites.

Proper dental care helps give your pet a good, long life... preventing mouth infections and loss of teeth. Digital dental radiography enables us to detect early dental disease below the gum line. Bacterial infections in the mouth have a direct line through the bloodstream to your pet's heart, liver & kidneys.

Schedule an appointment in February and receive a
20% DENTAL DISCOUNT



University Animal Hospital
of Greensboro, LLC



CHRISTINE E. HUNT, DVM • CATHERINE M. MARKIJOHN, DVM
1607-B West Friendly Ave. • Greensboro • 279-1003
(At corner of W. Friendly Ave. & Westover Terrace ext.)
www.DrChristineHunt.com

EMMY'S

Better Burgers

Open until
3 a.m. on
Fri. & Sat.

2206 Walker Ave.
Greensboro
336.285.9429



*Nobody Knows Your Neighborhood
Better than your Neighbor!*

For exceptional Service, Knowledge,
Integrity and Results—please give me a call.

Patti Eckard, REALTOR® CRS, GRI, SRES
RE/MAX REALTY CONSULTANTS
2621 Beechwood St.
Tel: 339-5927
Email: Patti.Eckard@gmail.com
Website: www.PattiEckard.com



To See All Homes Listed For Sale
In Lindley Park

Go To
www.BuyLindleyParkHomes.com



Andy Leung
336.508.1111
Andy@TeamLeung.com

*Each Keller Williams Realty is independently owned and operated.



Richardson Classic Renovations



Scott Richardson 209-1080

Bob Richardson 253-6147

web: richardsonclassicrenovations.com

mail: richardsonclassicrenovations@gmail.com

DANNY'S TIRE & AUTOMOTIVE CENTER

1112 PARK TER. GREENSBORO, NC 27403
(336) 292-1226

<http://dannystireandauto.net/>

Danny's Tire & Automotive Center will be sponsoring a **FREE** Car Clinic to our Lindley Park Neighbors in the **Spring of 2015!** We will have mechanics on hand to inspect your vehicle and to answer any questions you may have.

Date and Location to be announced closer to springtime, so be sure to look for our ad in the coming months!

HAPPY HOLIDAYS FROM OUR FAMILY TO YOURS!



Friends of the
UNCG Libraries Dinner
April 8, 2015
Best-Selling Author and
Forensic Anthropologist
Kathy Reichs

For tickets call Triad Stage at (336) 272-0160

For more information about our events see
uncgfol.blogspot.com.

Friends enjoy several privileges, including
book and DVD checkout.

Join today at library.uncg.edu/giving/fof.aspx



HOPE CHAPEL

IN THE CITY. FOR THE CITY.

Sundays at 10:30am
1825 Spring Garden St
(behind The Blind Tiger)
hopechapelgreensboro.org



Worship with us
Sundays at 11 a.m.
Gathering to worship ...
Departing to serve.

Lindley Park Baptist Church



First Moravian Church

304 S. Elam Ave., Greensboro
336-272-2196
www.greensboromoravian.org

*"In essentials, unity;
in nonessentials, liberty;
in all things, love."*

Sunday School for all ages, 10 am
Worship, Children's Church, 11 am

Come worship
with your neighbors!



**Energy Reduction Specialists
of
North Carolina**

*Saving Energy.
Saving Money.
Everyday*

336.643.9196

www.ERSofNC.com



- A more comfortable home
with less drafts and a more
consistent temperature

- Lowered utility bills

- Improved indoor air quality

- Reduced waste and pollution

- Extended life of your heating
and cooling equipment

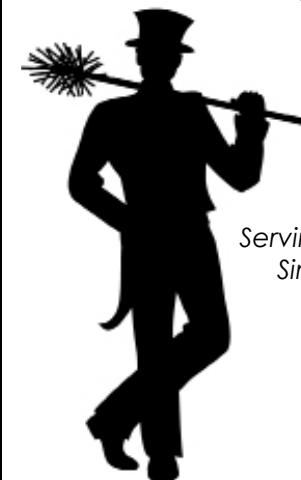
- Increased value and improved
marketability of your home

- Environmental stewardship

- Lower your carbon footprint

Call or email Gary Silverstein (Gary@ersofnc.com) or Paul Swenson (Paul@ersofnc.com)
to schedule your energy assessment to see how we can help you

John Budd's Chimney Service



Serving the Triad
Since 1978

johnbuddschimneyservice.com
336-282-1150
info@johnbuddschimneyservice.com

National Chimney Sweep Guild
North Carolina Chimney Sweep Association
Better Business Bureau, A+ rating

Proper Lawn

Lawn care done the proper way.

Contact Information

Proudly serving the Lindley Park and
Sunset Hills areas.

properlawn@outlook.com
336-681-6275

RUGGIERO TREE SERVICE

"Let the Italians
Handle It"



ANGIE: 336-292-1226



Lindley Park Neighborhood Association Supporters (as of 10/3/14)

With neighbor support, the association is able to sponsor the annual Easter Egg Hunt, Spring Fling, Chili Cook-Off, and Holiday Luminaries. Your contributions also helped launch our Lindley Park Web site.

Alan Ackerly & Jeni Pathman
 Will & Robin Anders
 Dyan Arkin & Ken Snowden
 Jake Assaf & Lauren Hudson
 Jerry & Anne Baumgartner
 Gertrude Beal
 Joanna Beckman
 Julie Bernstein
 Clifton & Becky Berrier
 Ryan Butler & Chris Sgro
 David & Jane Byrd
 James & Sylvia Chandler
 Thea & Anthony Deloreto
 Quinn & Erin Ditto

William Dixon
 Virginia Driscoll
 Sheila Duell & Robert Bellomy
 Bill & Patti Eckard
 Steven & Joyce Eury
 Ann Fitzmaurice
 Frank & Olga Fratoni
 Barry Goldman & Alice Beecher
 Philip & Dana Gorham
 Bobby & Allison Greiner
 Bob & Karen Grier
 Randy & Jeri Henderson
 Stephen Johnson & Marnie Thompson
 Judith Kastner

Phillip Lewis
 Grover & Faye Manheim
 James & Palmer McIntyre
 Mark & Rebecca Medendorp
 Ronald & Theresa Miller
 Clyde & Evelyn Mitchell
 David & Mary Ann Murray
 Marshall Nelson & Jason Anderson
 Charlotte Oleynik
 Shannon Peoples
 John & Patti Raxter
 Noel & Christine Rodriguez
 Danny Ruggiero
 Bill & Michelle Schneider

Carolyn Shankle & Morland Smith
 Julia Smith & Glenn Perkins
 Norman & Carolyn Smith
 Adam & Kathy Spivey
 Susan Taaffe
 Mike & Sue Toomes
 Michiel & Rebecca Van Der Sommen
 Margaret Wade
 Claudia Cabello & Jose Troncos
 Ann Cahill & Neil Swenson
 Susan Fletcher
 Jeffrey & Rebecca Miles
 Mark Toole & Mary Herbernick

2015 LPNA CONTRIBUTION FORM

LPNA contributions are due in January but it is always a good time to support your neighborhood association. Please fill out the form and mail it with your check to the address listed below (or bring it to a monthly meeting). If you'd like to be involved with any of the committees, or activities, please check your preference.

Name(s): _____ Address: _____

Email: _____ Home Phone: _____

PLEASE CHECK YOUR INTEREST(s):

Environmental Issues FUN-raising Park Preservation Website Public Safety/Public Works (speeding, burglary, sidewalks, etc) Zoning Issues Neighborhood Long-Range Plan Social Activities (Spring Fling, Chili Cook-off, Luminaries) Columns Fund
 Newsletter Volunteer — help distribute in your area \$ household contribution enclosed (\$15 suggested) \$ _____ Date: _____

Please make checks payable to LPNA and mail to: LPNA-Blake Sagar c/o Farlow Marlowe & Co PLLC 4125-D Walker Avenue, GSO, NC 27407