

COLUMNS

THE LINDLEY PARK NEIGHBORHOOD ASSOCIATION NEWSLETTER
www.lindleyparknc.com

80° TEMPERATURES AND RAIN SHOWERS CAN'T STOP THE CHILI COOK-OFF!



We had slightly lower attendance this year and about half as many entries as in 2013, but when there's chili involved (and free chili at that), nothing stops Lindley Park residents from showing up!

... and the winners are:

TRADITIONAL

- 1st:** The Friendly Ghost - Matt Chipolet
- 2nd:** Mighty Fine Bovine - Brian Kutzer
- 3rd:** Old School - Kim Pridgen

NON-TRADITIONAL

- 1st:** Porktober Fest: Ellie Todd
- 2nd:** Supreme Sausage & White Bean
Christine Kendall
- 3rd:** Stadium Chili Dog - Cyndy Kutzer

VEGETARIAN

- 1st:** Flora not Fauna - Richard Wells
- 2nd:** Red Hot Veg Head -
Amelia Mattocks

Thank you to everyone who entered a chili; we couldn't do it without you!

And as always, we'd like to thank our local business for generously donating our winner prizes: Sticks and Stones, Fishbones, Emma Keys, Bestway Grocery, Hops, Spring Garden Bakery, Common Grounds, and The Tasting Room.

Thanks to everyone who donated food to Greensboro Urban Ministry, we collected 60 lbs of food!

NEIGHBORHOOD ASSOCIATION OFFICERS

CHAIR

Larry Barnes
Larry.Barnes@wolfehomes.com
294-6344

VICE CHAIRMAN

Stephen Johnson
stephen@elamgradens.com

SECRETARY

Anne Embrey
anne.embrey@replacements.com

TREASURER

Blake Sagar
bsagar@cfmccpa.com

PARLIAMENTARIAN

Gertrude Beal
gbeal@guilford.edu

PUBLIC WORKS

Virginia Driscoll
dachelmama@yahoo.com

SOCIAL CHAIR

Josh Sherrick
joshuasherrick@gmail.com

COMMUNICATIONS COMMITTEE

NEWSLETTER CONTENT COORDINATOR

Jeri Henderson
jerihenderson811@gmail.com

NEWSLETTER ADVERTISING

Diane Gackenbach Smith
dggack@yahoo.com
337-7327

NEWSLETTER LAYOUT

Jessica Beamon

Michael Van Patter
michaelvanpatter@gmail.com

Anne Embrey
anne.embrey@replacements.com

Stephen Johnson
stephen@elamgradens.com

Patti Eckard
patti.eckard@gmail.com

Larry Barnes
Larry.Barnes@wolfehomes.com

PARKS & REC.

Barry Goldman
goldmab@gcsnc.com

PUBLIC SAFETY

Bill Eckard
bill@billeckard.com

WAYS & MEANS - OPEN

ENVIRONMENTAL

Elizabeth Link
ezlink@yahoo.com

GSO NEIGHBORHOOD CONGRESS REPRESENTATIVE

Susan Taafe
susantaaffe1@gmail.com

ZONING

Bill Schneider
bschneider@peppermooncatering.com

NEWSLETTER DISTRIBUTION

Joyce Eury
joyceury@gmail.com

DISTRICT 1 REP

Mary Alice Austin
austingreensboro@aol.com

DISTRICT 2 REP

Max Armfield
marmfield@elon.edu

DISTRICT 3 REP

Patti Eckard
patti.eckard@gmail.com

DISTRICT 4 REP

Gertrude Beal
gbeal@guilford.edu

EX-OFFICIO CHAIR

Bill Eckard
bill@billeckard.com

Lauren Smith
smellyfour@yahoo.com

NEWSLETTER ADVERTISING

The Columns is published by the Lindley Park Neighborhood Association. More than 1200 households receive hand-delivered copies. Issues are also posted on our website. Copies can be picked up at several neighborhood businesses. Publishing/Distribution is February, April, June, August, October and December.

Deadline for ads is the 10th day of the month prior to publication. Ad cost is \$35 per issue. Ad size is 1/6 of a page or 2 1/2 inches by 5 inches. The editor of the Columns reserves the right to edit as needed.

For more information, or to place an ad, contact Diane Gackenbach at dggack@yahoo.com or 337-7327.

“Thank You “ To Our Advertisers!

The Columns advertisers make it possible for the newsletter to be published, distributed to more than 1200 households and available online. Please frequent these establishments and let them know you heard about them in The Columns. Their support is so important and very much appreciated!

Need An Extra Copy?

Lindley Park Columns is available at a number of local businesses. Stop by one of these shops and grab a copy.

Bestway - Walker Avenue

Gene's Barber Shop – Spring Garden Street

Lindley Rec Center – Springwood Drive

Spring Garden Bakery & Coffee Shop - Spring Garden Street

Common Grounds Coffee Shop - Elam Avenue

Hops Burger Bar - Spring Garden Street

“LIKE” LINDLEY PARK

If you're a Facebook user, join the 1,258 others who have “LIKED” the neighborhood page, www.facebook.com/LindleyPark It's a quick and easy way to post a note, ask a question, share photos, and stay up-to-date.

UPCOMING EVENTS

NOVEMBER 2, 2AM

Fall Back, Daylight Savings Time Ends

NOVEMBER 22

Customer Appreciation Day @ The Corner Market

DECEMBER 5, 2-8PM

DECEMBER 6, 10AM-3PM

Candle Tea @ First Moravian Church (see pg 4)

DECEMBER 5

Greensboro Festival of Lights & First Friday festivaloflightsgso.org

DECEMBER 6, 4PM

Lindley Park Luminaries assembly @ Rec Center (see pg 5)

DECEMBER 13

Neighborhood Tree Trimming @ The Corner Market

DECEMBER 13, 6PM

Sunset Hills Running of the Balls 5K www.therunningoftheballs.com

JANUARY 27, 7PM

Community Meeting @ Rec Center, LPNA Officer Elections

More About The Corner Market

The Corner Market is a sidewalk market located at the corner of Walker and S. Elam Avenue. Every Saturday from 8am to noon this market and its community of folks transform a beat up piece of asphalt into a lively place of gossip, recipe sharing, dog stories, children's art, and retail. Join your neighbors and find fresh produce, breads, plants, and other local and regional products. Seasonal gifts and other products, many made by your

neighbors, are available. The market includes experienced growers, and many folks from the neighborhood including those trying to create a new way to make ends meet, the neighborhood school, and children's lemonade stands. While you are there you can also check out the other businesses on the corner for groceries, meals, and coffee, including a rave breakfast at Sticks and Stones.

PLEASE SUPPORT THE LPNA

Listed on page 12 of the Columns are members of the LPNA that made a financial contribution to our Association.

Your contributions help sponsor our wonderful neighborhood events, such as the Easter Egg Hunt, Spring Fling, Fall Fest and Holiday Luminaries. For only \$15 a year, you can help make our neighborhood association the best it can be! Please fill in

the contribution form on the last page of this newsletter.

The Columns cost around \$585.00 per issue to print 1250 copies. We need to support those that advertise. A huge thank you goes to the folks that deliver the newsletter to every door. It is the neighborly involvement that makes Lindley Park so great.

LINDLEY PARK E-LIST

Do we have your email address? If not, we need it! You'll receive timely neighborhood reminders and announcements in addition to being the first to receive the "Columns" newsletter in living color!

And don't worry about security, we only use the e-list for neighborhood news so it is not distributed to any other groups. Email us at lpnagso@gmail.com to be included.

IDEAS FOR NEWSLETTER

Do you have an interesting story to tell? Know something about our neighborhood history? Write us about it! We are always interested in hearing from our neighbors. The Columns serves as glue to connect us to one another- and we want to hear from you!

Please email submissions to Jeri Henderson at jerihenderson811@gmail.com. The news letter is published every-other month, with deadlines on (or about) the 1st of February, April, June, August, October, and December.



Art in the Yard... Local fun for all People

Lindley Park neighborhood is eclectic, it's fun and diverse it's why we live here! Some of the cool things about our neighborhood are the homes, the architecture, the bungalows with backyard buildings. If you are enjoying a walk around one of our streets you can see how these homes and buildings are being revived, painted, rebuilt and reinvented to house new life. Beautiful clematis and honeysuckle vines growing on the building fronts bringing beauty to their old structures. What's even better is as you start to know your neighbors you will find out what is happening inside these spaces, many are now becoming art studios to our neighborhood folk. You will find a fabric designer making cool printed fabrics, a woodworking shop, massage therapist, yoga or even a working pottery studio. Our neighborhood is full of talented artists.

As we have watched our Corner Farmers Market grow we have been given a chance to meet artists and growers and see their work. Another gem in our neighborhood is an art show called "Art in the Yard". This show was reborn last year in Lindley Park and is now in it's second year. Featuring the work of our very own Lindley Park artists this show is held twice a year in May and November in the backyard and ceramic art studio of Moonbird



Pottery on Beechwood Street.

This November 8, Art in the Yard, will showcase the handmade work of 6 local artists. Artists such as Chunk Jewelry, art pieces influenced by design, travel & culture using unique & rare handcrafted elements; Whim Artisan Fragrances, a beautiful collection of handmade eau de toiles & vegan soaps, scents & fragrances using only natural ingredients; Dancing Free Designs, fun and inspiring jewelry handcrafted using brass, silver and copper adorned with words & quotes to make your heart sing and soul dance; Hope Spreads, a craft jammy that incorporates local fruit and herbs into fanciful and savory jams, jellies, marmalades, and chutneys and Moonbird Pottery, hand formed ceramics painted and carved with colorful images of flowers, bird, owls and more all traveling together along the bases and rims of cups, bowls and platters boasting their own personality and folk art flair.

Art in the Yard is a fun and free family event right here in our Lindley Park Neighborhood. Come out and enjoy art, food, neighbors and friends, sit by the fire pit and support local art made right here in your own back yard. What could be better? Join us Saturday, November 8 at 2629 Beechwood Street. Look for the blue signs... they will lead you here.

- Christina Brown

FIRST MORAVIAN CANDLE TEA



We invite you to experience this rich history and attend the 52nd Annual Candle Tea at First Moravian Church on Friday December 5, 2014 (2:00pm to 8:00pm) and Saturday December 6, 2014 (10:00am to 3:00pm).

Begin in our Sanctuary at 304 S. Elam Avenue in Greensboro where you will enjoy beautiful music and talks on Moravian history.

Experience fragrant beeswax candles being made in our Candle Hut, and then move on to the New Fellowship Hall where you will find our Putz (a miniature Christmas scene filling the entire performance stage), ladies trimming candles, Moravian stars, pottery, advent wreaths, chicken pies with gravy, gingerbread and other Moravian baked goods, crafts, artists and other special finds.

HOPS



BURGER BAR

COME & JOIN US FOR
FINE BURGERS
AND
FINE BEERS
2419 SPRING GARDEN ST.

A walk to our Candle Hut will show you how the traditional beeswax and tallow candles are still handmade, continuing hundreds of years of craftsmanship.

Our Tavern offers a moment from the past where you can enjoy a large fireplace, lively music, Moravian sweet coffee, lemonade and delicious Moravian sugar cake at no charge.

Enjoy the beauty of a live nativity and traditional Moravian Brass Band as well as a variety of seasonal music. Many say this Candle Tea is the beginning of their celebration of the birth of Jesus Christ. Please join us and make it a tradition for your family too!

GREENSBORO BEAUTIFUL WREATH SALE



Greensboro Beautiful is once again hosting its annual Holiday Greenery Festival! Proceeds support the city's four public gardens; the Neighborhoods Right Tree, Right Place program; litter clean-ups, and several fun events held in the gardens. By ordering your holiday greenery from Greensboro Beautiful, you'll be making Greensboro beautiful during the holidays, and helping to keep it beautiful all year long! Wreaths of various sizes (with or without bows), roping (garland), and Poinsettias are available.

Orders placed by **November 7th** that use the code **GB2014B** will receive 20%* off!

Orders will be available for pick-up on Sunday, November 23 from 12-5PM at the Lewis Rec Center. If our neighbourhood order is \$300 or more, they'll deliver to a single location in Lindley Park for pick-up.

To order, visit:
<http://tinyurl.com/greenerysale>
or call **336-373-2199**

To view the brochure, visit:
<http://tinyurl.com/greenerybrochure>

*a total of 10 orders must be placed under this group code in order for the discount to be applied

Tu Much Beauty Parlor
2414 Spring Garden St

336 292-1898

OPEN 7 DAYS A WEEK
WALK-INS WELCOME

SUN-MON *apts 12p-6p*
TUES-FRI *apts 8a-8p*
SAT *apts 8a-7p*

Total Hair Care for Men, Women, & Children
NAILS, WAXING, & FACIAL SERVICES
TUES & WED \$40 Perms & Relaxers

24/7 BOOK ONLINE
www.tumuchstyles.com

DANNY'S TIRE & AUTOMOTIVE CENTER

Your Lindley Park Neighbor since 1988.

Family Owned and Operated. Come meet your neighbor!

Visit our website for more information:

www.dannystireandauto.net

1112 Park Terrace 336-292-1226 8-5 Monday - Friday

Before you store your lawnmowers and weed eaters for the winter, bring them to us and we will winterize them for you!



Mention this AD and receive \$5 off NC State Inspection



LPN 100 is a multi-year project that will help build interest and excitement leading into Lindley Park Neighborhood's 100 Year Anniversary in 2017. The goal of the project is to generate ideas and insight from residents on how they would like to see the neighborhood grow and develop, to leave as wonderful a neighborhood to future residents as was left to us.

To do this LPN 100 will transform 6-8 individual sites around Lindley Park, one at a time and for **ONE DAY ONLY**, over the next 2.5 Years. The concept of transforming a site for one day is called a "Pop Up." This concept has been used in both restaurant and retail settings, but recently it has also been used in the Community Development setting. The idea is to take a blighted, underused, or overlooked area and transform it for a day into a place that people would visit and use, a destination. The pop-ups will give people a vision of what a place could be and not what it is.

Stay tuned as more information about LPN 100 will be made available as the project progresses. If you would like to be involved, please contact either Stephen Johnson at stephen@elamgardens.com or Adam Spivey at nspivey@elon.edu

ALL-AGES CHESS CLUB @ LINDLEY REC CENTER

Enjoy a night out with your friends, family and neighbors playing chess every Wednesday at the Lindley Center from 7-8 p.m. Come to learn or sharpen your skills. It's a multi-generational no stress atmosphere where everyone can have fun playing the world's game. Plenty of chess boards are provided. For more info contact Krystyna Rodriguez: la_chabochi@yahoo.com



HELP LIGHT UP LINDLEY PARK

Keep the afternoon of Saturday, December 6 open to participate in the annual luminary event. We will meet at 4PM at the Rec Center parking lot to fill 1200 bags with sand and candles. Several crews of adults and kids will then place the luminaries on the streets bordering the park, including S Lindell, Willowbrook, Park Terrace, west side of Spring Garden, and east side of Walker Ave. (from S Lindell to Ashland).

Volunteers are also needed to pick up used luminaries early on Sunday morning, December 7. Please email lpnagso@gmail.com if you can help.

Thanks for keeping this neighborhood tradition burning bright!



First Moravian Church

304 S. Elam Ave., Greensboro
336-272-2196
www.greensboromoravian.org

*"In essentials, unity;
in nonessentials, liberty;
in all things, love."*

Sunday School for all ages, 10 am
Worship, Children's Church, 11 am

*Come worship
with your neighbors!*



HOPE CHAPEL

IN THE CITY. FOR THE CITY.

Sundays at 10:30am
1825 Spring Garden St
(behind The Blind Tiger)
hopechapelgreensboro.org



Worship with us
Sundays at 11 a.m.
Gathering to worship ...
Departing to serve.

Lindley Park Baptist Church

BE A GOOD DOG NEIGHBOR

Robert Frost wrote that "good fences make good neighbors." It is equally true that good dog owners make good neighbors. Neighborly relationships are ruined every day by unconscientious dog owners, and poorly trained dogs. But, if you take the right measures, you can have your dog and your friendly neighbors too, whether you have good fences or not.

Barking

One of the biggest issues people have with their dog-owning neighbors is excessive barking. The best way to keep your dog from barking and infuriating your neighbors is to keep him inside when you're not available to supervise. Also consider keeping the windows closed while you are away so if your dog does bark, it won't bother your neighbors.

Pick Up the Poo

Another issue people have with their dog-owner neighbors is dog waste. It is unpleasant, smelly, and a huge pain if you step in it. It also spreads disease so leave home with a bag and pick it up!

No Roaming

When your dog is not in your home or yard, he should be with you, and always on a leash. You have zero control of a dog not on a leash, no matter how well trained he is. The best way to avoid disaster is to leash your dog.

By Honor Tarpenning, NextDayPets.com Staff



John Budd's

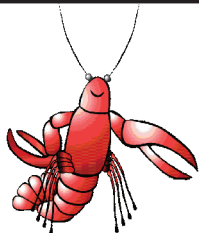
Chimney Service



Serving the Triad
Since 1978

johnbuddschimneyservice.com
336-282-1150
info@johnbuddschimneyservice.com

National Chimney Sweep Guild
North Carolina Chimney Sweep Association
Better Business Bureau, A+ rating



Devall's Cajun Cuisine

Authentic Louisiana Cooking

proudly serving our Lindley Park friends

Lunch & Dinner Specials

\$5 off your
\$25 or
more meal
purchase
with this coupon!

Great home cooked meals plus Fresh Seafood, Jambalaya, Gumbo, Crawfish, Etouffee, Steaks, Red Beans & Rice, Fried Chicken, Burgers, Muffalettas, Beignets, and the Best Po Boys in town!

3932 W. Market St (across from Sheetz) Tues-Fri 11am-2:30pm & 5pm-9pm Sat 5pm - 9pm
Catering - Private Events - All ABC Permits - *Delivery thru TakeoutTriad.com

Richardson Classic Renovations



Scott Richardson 209-1080

Bob Richardson 253-6147

web: richardsonclassicrenovations.com

mail: richardsonclassicrenovations@gmail.com

Gene's Barber Shop

2412 Spring Garden
299.8669



Established 1956.
53 years of service to the neighborhood.
Walk-ins welcome or call for appointment.
Tues.-Fri., 8 am - 6 pm
Sat. 7:30 am - 3 pm

At your service:
Frank Dorrity, Ben Ma,
Jim Nelson, Bill Young,
John Ma

LOOSE LEAF COLLECTION



The Field Operations Department will conduct its annual Loose Leaf Collection Program from November 2014 to January 2015 with two scheduled pickups in each area of the city.

Leaves curbside by **November 10** will be picked up by **December 20, 2014**.
Leaves curbside by **December 22** will be picked up by **January 23, 2015**.

To use the Leaf Collection Program, follow these tips:

- Rake leaves to the edge of your yard behind the curb - not in the street.
- Remove sticks, rocks, and other debris that may damage City equipment.
- Do not park vehicles on, in front of, or near leaves.

The leaf collection program helps keep leaves from blocking storm drains and prevents decaying leaves from polluting our lakes and streams. The collected leaves are made into compost to fertilize City gardens and landscaped areas. Residents may purchase the compost at the White Street Landfill, 2503 White St., or by calling 336-373-2489.

Greensboro residents can also use the City's year-round yard waste program. Simply put your leaves in clear plastic bags or in a plastic or metal garbage can and set them at the curb on your regular trash collection day. The leaf collection schedule may change due to inclement weather. The program does not service private streets.



"Respect Our Trees" Signs

Available for **\$10** (cash) from Pete Schroth.
Pick up at 2607 Beechwood Street.

INTERNET SHOPPING SAFETY



Online security is in the news regularly and more of an issue than ever before. Please review the following list, provided by Greensboro Police Department, so the information you share during online shopping stays safe.

- Shop wisely. Look for accredited logos on the website that the business is legitimate. Check with your better business bureau.
- Make sure the website is secure. Look for signs/logos that the website protects your data.
- Know your rights. By law a company must ship your order within the time stated on their website. Understand the return policy and how to dispute a purchase.
- Maintain your privacy. Don't disclose your personal information unless you know who is on the other end collecting your information.
- Keep good records. Print a copy of your order confirmation, save email receipts, and write down any pertinent information in case it is needed at a later time.
- Look for a website's customer rating. Check posts previous customers have written on the company's website, blog, or customer feedback page.
- Evaluate and research the company before making a purchase on the internet.
- Use filters that warn you of suspicious or fraudulent websites/web pages.
- Create a strong password that makes it harder to be hacked or high jacket by online predators.
- Choose to use a credit card vs debit card. Credit cards offer protection from identity theft that debit cards don't offer.

continued on page 9



Nobody Knows Your Neighborhood Better than your Neighbor!

For exceptional Service, Knowledge,
Integrity and Results—please give me a call.

Patti Eckard, REALTOR® CRS, GRI, SRES
RE/MAX REALTY CONSULTANTS
2621 Beechwood St.
Tel: 339-5927
Email: Patti.Eckard@gmail.com
Website: www.PattiEckard.com



To See All Homes Listed For Sale
In Lindley Park

Go To
www.BuyLindleyParkHomes.com



Andy Leung
336.508.1111
Andy@TeamLeung.com

*Each Keller Williams Realty is independently owned and operated.



NEWS FROM LINDLEY ELEMENTARY

Hello Lindley Park Neighbors!

We are fortunate to have such a wonderful school in our neighborhood, where children can walk safely to school, have school friends as neighbors, and be supported by an active parent and neighborhood community. Increased enrollment at Lindley is a testament to our great school.

Even if you do not have children enrolled at Lindley, a strong neighborhood school is good for our neighborhood!

As a neighbor, we ask that you consider supporting Lindley. There are a number of ways you can support the school - here are a few:

1. Link your Harris Teeter Vic Card to Lindley (you can link up to 5 schools). Our code is 2872 and you can even do this online! <http://tinyurl.com/vicCardLinkYourSchool>

2. Purchase an Attractions book! For only \$25, this coupon book offers \$6,313 in savings, and includes many neighborhood businesses! A full listing of savings and merchants is available online at <http://tinyurl.com/2015AttractionsBook> Interested? Please email lindleypta@gmail.com and we will deliver to your house!

3. Do you enjoy reading/working with students? Become a Reading or Math Buddy at Lindley! Just 30 minutes spent with a student once or twice a week can make a tremendous difference and help them succeed! Want to learn more? Email lindleypta@gmail.com and we will get you started!

4. Or would you rather come in to read once on Community Reader Day on November 20th? Contact Mary.herbenick@gmail.com to sign up!

5. Our November ballot will ask voters to consider a 1/4 cent tax for schools. County Commissioners will dedicate these funds to schools, but due to state law, the ballot will not mention schools. Find out more information, visit <http://tinyurl.com/GuilfordTaxforSchools>

Thanks for all you do to make our neighborhood the best in Greensboro!

Sincerely,
The Lindley PTA
Palmer McIntyre, President

Calendar of Events

11/4 - Election Day, no school
11/6 - Family Science Night
11/11 - Veteran's Day, no school
11/12 - Kiosco Night 5-9pm
11/17-11/21 Book Fair
11/26-28 - No School, Happy Thanksgiving
12/4 - Science Fair
12/4 - Chick-fil-A Night - 5-7pm
12/10 - Kiosco Night - 5-9pm
12/22-1/5 Winter Break



www.boxtops4education.com



ARTS • ATHLETICS • ACADEMICS

www.labelsforeducation.com



Dana and Brad
on Longview St.



**Energy Reduction Specialists
of
North Carolina**

*Saving Energy.
Saving Money.
Everyday*

336.643.9199

www.ERSofNC.com



Elizabeth and Seth
on Park Terrace

- A more comfortable home with less drafts and a more consistent temperature
- Lowered utility bills
- Improved indoor air quality
- Reduced waste and pollution

- Extended life of your heating and cooling equipment
- Increased value and improved marketability of your home
- Environmental stewardship
- Lower your carbon footprint

Call or email Gary Silverstein (Gary@ersofnc.com) or Paul Swenson (Paul@ersofnc.com) to schedule your energy assessment to see how we can help you

continued from page 7

- Don't shop on public computers. They can put your information at risk because you cannot control who will or has used that computer
- Don't store your information on the internet. Shopping sites offer this ability to speed up your shopping experience. But, if there is a breach of date, your personal information is at risk of being stolen or sold to someone else.
- If you become a victim of identity theft or financial card fraud, report the crime to your local police department as soon as possible
- Contact your financial institution, credit card companies, and any other you feel necessary to contact to protect your money
- Put an alert on your credit files. This makes creditors and merchants take the extra steps to verify your identity
- Obtain copies of your credit report on a regular basis. Dispute any accounts you didn't open, charges you didn't make, or other in accurate information
- Be cautious about credit monitoring services unless through Experian, Equifax, or Trans Union

Courtesy:
Greensboro Police Department
Central Division
Community Resource Team

always [★]
shoot for [★]
the moon!



Corporate Events | Theme Parties | Wedding Receptions
Rehearsal Dinners | Buffet Dinners | Plated Dinners | Box Lunches
Barbeques & Picnics | Full-Service Bars | Hors d'Oeuvres

1068 Boulder Road | Greensboro NC 27409
Phone 336.218.8858 | www.PepperMoonCatering.com



LIKE US ON FACEBOOK

POST YOUR FAVORITE ITEM FOR A CHANCE TO WIN THAT ITEM FOR FREE

Sisters
JEWELRY AND GIFTS

AFFORDABLE GIFTS SHE WILL LOVE
HANDMADE AND LOCAL
FREE GIFT WRAPPING!



330 TATE ST. GSO
WWW.SISTERSONTATE.COM

COMMON GROUNDS
COFFEE • ESPRESSO • CONVERSATION

PROUDLY SERVING
GREENSBORO - NORTH CAROLINA

Lindley Park Blend
Established 1902

- Custom Toy Shop (Menace Inc. Studios)
- FREE Internet
- Air Hockey & Pool Table
- Flat Screen T.V.'s with X-Box

TRY OUR KAVA TEA!

YOUR STORY HERE

Do you have a historical story about Lindley Park or an old photo of your home?
Do you have an idea for an article of interest to the neighborhood?

Your suggestions are what make COLUMNS special!

Email us at
lpnagso@gmail.com

RUGGIERO TREE SERVICE

"Let the Italians
Handle It"



ANGIE: 336-292-1226

Norman B. Smith

Smith, James, Rowlett & Cohen, LLP

Provider of competent, efficient and affordable legal services since 1965.

101 S. Elm Street, Suite 310
Greensboro, NC 27401

Tel: (336) 274-2992
Email: normanbsmith@earthlink.net





Herford talks turkey

ATTENTION: ALL DOGS & CATS!

Turkey Day is quickly approaching. Even though it's tasty, it will do bad things to your waisty and your tummy, too. Turkey skin and gravy are high in fat, which can cause life-threatening pancreatitis or severe digestive problems. So be strong and hold out for your regular dog or cat food. Otherwise, I may be seeing you at the clinic.

University Animal Hospital



of Greensboro, LLC

CHRISTINE E. HUNT, DVM • CATHERINE M. MARKIJOHN, DVM

1607-B West Friendly Ave. • Greensboro • 279-1003

(Behind Credit Union at corner of W. Friendly Ave. & Westover Terrace ext.)

www.DrChristineHunt.com



**E
M
M
A** **K
E
M
Y
S**

Better Burgers

Open until 3 a.m. on Fri. & Sat.

2206 Walker Ave.
Greensboro
336.285.9429

The Dailey Renewal Retreat Bed and Breakfast

808 Northridge Street
Greensboro, NC 27403

336-451-7742

www.daileyrenewalretreat.net



TRIAD PAWPRINTS

SCREEN PRINTING

EMBROIDERY

PROMOTIONAL ITEMS



336.543.3737

jennifer@triadpawprints.com

facebook  Triad Pawprints

jared@triadpawprints.com



Lindley Park Neighborhood Association Supporters (as of 10/3/14)

With neighbor support, the association is able to sponsor the annual Easter Egg Hunt, Spring Fling, Chili Cook-Off, and Holiday Luminaries. Your contributions also helped launch our Lindley Park Web site.

- | | | | |
|-----------------------------|-------------------------------|-----------------------------------|----------------------------------|
| Alan Ackerly & Jeni Pathman | Quinn & Erin Ditto | Stephen Johnson & Marnie Thompson | Noel & Christine Rodriguez |
| Will & Robin Anders | William Dixon | Judith Kastner | Danny Ruggiero |
| Dyan Arkin & Ken Snowden | Virginia Driscoll | Phillip Lewis | Bill & Michelle Schneider |
| Jake Assaf | Sheila Duell & Robert Bellomy | Grover & Faye Manheim | Carolyn Shankle & Morland Smith |
| Jerry & Anne Baumgartner | Bill & Patti Eckard | James & Palmer McIntyre | Julia Smith & Glenn Perkins |
| Gertrude Beal | Steven & Joyce Eury | Mark & Rebecca Medendorp | Norman & Carolyn Smith |
| Joanna Beckman | Ann Fitzmaurice | Ronald & Theresa Miller | Adam & Kathy Spivey |
| Julie Bernstein | Frank & Olga Fratoni | Clyde & Evelyn Mitchell | Susan Taaffe |
| Clifton & Becky Berrier | Barry Goldman & Alice Beecher | David & Mary Ann Murray | Mike & Sue Toomes |
| Ryan Butler & Chris Sgro | Philip & Dana Gorham | Marshall Nelson & Jason Anderson | Michiel & Rebecca Van Der Sommen |
| David & Jane Byrd | Bobby & Allison Greiner | Charlotte Oleynik | Margaret Wade |
| James & Sylvia Chandler | Bob & Karen Grier | Shannon Peoples | |
| Thea & Anthony Deloreto | Randy & Jeri Henderson | John & Patti Raxter | |

2014 LPNA CONTRIBUTION FORM

LPNA contributions are due in January but it is always a good time to support your neighborhood association. Please fill out the form and mail it with your check to the address listed below (or bring it to a monthly meeting). If you'd like to be involved with any of the committees, or activities, please check your preference.

Name(s): _____ Address: _____

Email: _____ Home Phone: _____

PLEASE CHECK YOUR INTEREST(s):

- Environmental Issues
 FUN-raising
 Park Preservation
 Website
 Public Safety/Public Works (speeding, burglary, sidewalks, etc)
 Zoning Issues
 Neighborhood Long-Range Plan
 Social Activities (Spring Fling, Chili Cook-off, Luminaries)
 Columns Fund
 Newsletter Volunteer — help distribute in your area
 \$ \$ household contribution enclosed (\$15 suggested) \$ _____ Date: _____

Please make checks payable to LPNA and mail to: LPNA-Blake Sagar c/o Farlow Marlowe & Co PLLC 4125-D Walker Avenue, GSO, NC 27407