

Columns

LINDLEY PARK NEIGHBORHOOD ASSOCIATION



Lindley Park Website: www.lindleyparknc.com

October, 2008 Vol. 12, No.5

Neighborhood Association Officers

Susan Taaffe	Chair
susantaaffe@bellsouth.net	297.0306
Michael Scearce	1st Vice
michael@michaelscearce.com	209.0049
Glenn Perkins	Secretary
glennperk@gmail.com	299-7898
Dyan Arkin	Treasurer
darkin@triad.rr.com	294 9493
Virginia Driscoll	Parliamentarian
dachelmama@yahoo.com	855-5233
Barry Goldman	Parks & Rec.
goldmab@guilford.k12.nc.us	852-1848
Elizabeth Link	Public Works
baddogi@yahoo.com	273-4672
Stephanie McGovern	Public Safety
scdecker24@hotmail.com	207-0319
Tricia Bouras Co Chair	Social
Joyce Eury Co Chair	Social
eury1234@bellsouth.net	292-7129
Open	Ways & Means
Bill Schneider	Zoning
bschneider@peppermooncatering.com	218-0085
Bill Eckard	Newsletter Editor
bill@billeckard.com	632.1448
Patti Eckard	Bus. Liaison/NL Ads
patti.eckard@gmail.com	632-1448
Open	Distict #1 Rep
Virginia Driscoll	District #2 Rep
dachelmama@yahoo.com	855-5233
Palmer McIntyre	District #3 Rep
pmcintyre@piedmontland.org	854-4080
Lauren Smith	District #4 Rep
smellyfour@yahoo.com	294-1516
Jodi Dodson	Environmental Issues
Jodi.Dodson@lfg.com	297-1681
Open	Newsletter Distribution
Matt Russ	Chair, ex-officio
anniefitz@triad.rr.com	854.9550

FALL FEST CHILI COOK OFF- OCT 18TH!!

Brisk fall weather may finally be upon us. Come out and enjoy it with your friends and neighbors at our annual Fall Fest on Saturday, October 18th. Join us at the corner of Lindell and Springwood from **4:30 - 7:30** for fun, games **AND our first ever chili cook-off**. Games will begin at 4:30 pm, while chili sampling and eatin' begins around 5:00. So put on your chef's hat, dust off your cookbooks, slice up those jalapenos and impress your neighbors with your best recipe.

There are **FOUR** categories you can enter:

- **TRADITIONAL/HOT** (please don't try to singe our taste buds!),
- **REGIONAL** (Cincinnati, Texas, Asian style etc...)
- **VEGETARIAN** (self explanatory, but no fish, poultry, beef)
- **MOST ORIGINAL** (unusual ingredients, etc.)

Chili entries should be enough to serve about 20 people and need to be brought to the Fest in a pot so we can keep them warm over ster-nos. No crockpots please. Chili entries should be brought to the park by 4:30 so that tasting and voting can begin at 5:00.

How do I enter?

Please contact Joyce Eury to pre-register your chili entry. This is important so we can be sure we will have enough chili and prizes. Joyce can be reached at 292-7129 (feel free to leave a message) or eury1234@bellsouth.net

We will provide all traditional chili fixins'... cheese, sour cream, chips etc. However if you have a regional or other chili that requires something a little unusual, please provide that yourself.

What can I win?

All chili entrants will be eligible for one the many great gift-certifi-cate prizes.

continued on page 2

Inside Issue...

- Scam I.D.
- Neighborhood News
- Dunkin Donut Update

Advertising in the Columns

The Columns is published by the Lindley Park Neighborhood Association. More than 1200 households receive hand-delivered copies. Issues are also posted on our website. Copies can be picked up at several neighborhood businesses. Publishing/Distribution is January/February, March/April, May/June, July/August, September/October and November/December. Deadline for ads is the 10th day of the month prior to publication. Ad cost is \$35 per issue. Ad size is 1/6 of a page or 2 1/2 inches by 5 inches. The editor of the Columns reserves the right to edit as needed. For more information, or to place an ad, contact Patti Eckard at Patti.Eckard@gmail.com or 632-1448.

HANDY CAPABLE NETWORK

What else should I bring?

As always we ask everyone to bring something to share. Those NOT bringing chili, if your last name begins with the letters A-M please bring a dessert, if it begins with letters N-Z please bring cornbread or a side dish. There will be picnic tables, but you may want to bring a blanket or chairs.

The HandyCapable Network was founded in 2003 with the express purpose of using cast off computers to train developmentally disabled adults to do hardware repair and software installation on the computers they receive. These computers are then re-distributed to schools, low-income families, and other under-served populations so that they may have access to the technology and skills necessary to succeed in the 21st century. Any Lindley Park resident who has a computer to donate or know someone who is disabled or elderly and could use a computer. please call (336) 209-7360.

Carole McLean

FALL BACK

NOVEMBER 2
Daylight Savings Time
Change
Gain 1 hour of sleep
Yay!!!

Needed... Newsletter Volunteer Distributors

We now have a couple of routes open and are in need of two carriers. It does not pay anything but the benefits are great. You get to meet your neighbors! Ashland, from Walker to Holder. And Walker, from Holden to Market. If you can help out please email me at bill@billeckard.com. Or call 336.632.1448



First Moravian Church

304 South Elam Avenue
Greensboro, NC
336-272-2196

www.greensboromoravian.org

*"In essentials, unity;
in nonessentials, liberty;
in all things, love."*

Sunday School for
All Ages — 10 am

Worship and Children's
Church — 11 am

**Come Worship with Your
Neighbors!**



Giving You a Change of Space!

Residential Interior Painting

Owner always on site!

Call Anita or Sharon
336-292-8565
theladies@anewviewpaint.com

The most gratifying
acknowledgement of an
event's success is expressed
through the joyous faces
of the guests.
Call or email for your next event.



2512 W. MARKET ST., GREENSBORO, NC 27408 ☎ (336) 718-8858
www.peppermooncatering.com ★ www.peppermooncatering.com

"HALLELUJAH TRAIL"

October 29, 2008

6:00 - 8:30 p. m.



Come experience the "Hallelujah Trail," a night hike through biblical times. Meet Bible characters and hear their fascinating stories of adventure and revelation. No spooks, just plenty of surprises await children and adults alike on this interactive experience. Travel back in time as you journey through the night and hear amazing stories from the Bible. Treats will be given on the trail with hot chocolate and cookies provided at the end. Participants need to bring a flashlight and treat bag. Come in costume or just as you are. For more information, directions, and to make reservations, call Lindley Park Church at 292-5761. Admission is FREE!!!

Senior Resources of Guilford is a non-profit organization which promotes the independent living of older adults in Guilford County. Senior Resources is a United Way member agency serving adults age 60 and over and their families with a wide range of community-based activities and supportive services. These services include medical transportation, community nutrition programs, telephone reassurance, case assistance, information and referral, information and counseling on medical insurance issues, senior role models and mentors for children, home delivered meals, outreach to rural and refugee communities, and volunteer opportunities. For information about these services, call Seniorline at 333-6981 in Greensboro or 884-6981 in High Point.

WHAT YOU CAN DO TO PROTECT YOURSELF AGAINST SCAMS

1. The best advice is to hang up on anyone who calls you with any kind of pitch or offer. Even if they are legitimate, (1) they are intruding on you and (2) they are trying to sell you something you don't need or could find cheaper if you shopped around.
 2. Don't give your Social Security number, your credit card number or your checking account information to unknown callers.
 3. Be wary of anyone who calls claiming to be with your bank, your Credit Card Company, etc. asking for account information.
 4. Don't let a caller pressure you into buying anything or sending any money for alleged prizes.
 5. Don't fall for the 'you must send money' to win the prize scam.
 6. Beware of offers to help you recover money you were scammed out of.
 7. Check out unsolicited offers with the Better Business Bureau and the Attorney General's office before sending any money.
 8. Don't let anyone in your house to use your phone, even if they pretend to have an emergency.
 9. Avoid repair men who stop by your house to offer you low prices on work they claim you need done.
 10. Remember the old and wise saying, "If it sounds too good to be true, it probably is."
- continued on page 5*

Master
Electrician



30 Years Experience
Local References
Licensed, Bonded,
and Insured

Our specialty is older home
repair and installation

Mack Melvin
273-9348



**Your Friendly Neighborhood Bike Shop,
Locally Owned and Operated.
Located right across the street at:**

**The Shoppes at Lindley Park
2823 Spring Garden St.
852-3972
www.friendlybike.com**

**Bikes for the whole family from training wheels to custom frames.
Any and all repairs.**

Brush Up On Keeping A Clean Fireplace

Fall is a great time to get your wood burning fireplace ready for the winter. You can start with a relatively easy task that many of us avoid - cleaning the fireplace. The process for cleaning your masonry fireplace and the lower part of its chimney and flue is actually much easier than you may have imagined.

Prepare for cleaning. Use a plastic drop cloth for the floor surrounding the fireplace. Place a large trash can on the plastic for collection of debris and soot. Put on some old clothes perfect for cleaning.

Remove the andirons and grate. To keep clean, you may want to use latex gloves when removing these before taking them outside for further cleaning. Scrape andirons and grate with a wire brush (if they're brass, consider a special brass cleaner).

Clear debris from the firebox. After checking that all ashes have cooled, use a shovel or ash vacuum, clear all large debris from the firebox.

Brush it out. Line the bottom of the firebox with a few layers of newspaper, then, starting from the top and moving down, loosen soot and creosote from the walls of the firebox and damper area using a wire brush. When complete, bundle up the newspapers and discard.

Create a magic cleaning mix. Being sure that you have rubber gloves and goggles on, create a cleaning solution with washing soda, vinegar or trisodium phosphate (TSP) mixed with warm water. (Don't mix vinegar with bleach or ammonia to avoid a toxic gas. TSP can be caustic and may burn skin or eyes; follow label directions for proper use).

Start deep scrubbing. Place newspapers at the bottom to collect debris. Using a stiff nylon scrub brush and your cleaning solution, scrub the firebox from the top down. When the walls are complete, discard the newspapers at the bottom and then scrub the bottom of the firebox.

Let it dry. Close up the damper and let the firebox dry out. Replace the freshly cleaned andirons and grate and enjoy a newly cleaned fireplace.

A clean firebox and damper can make the fireplace look new again, and help make your fireplace safer to use. Removing debris like carbon based soot and highly combustible creosote will decrease your chances of fire caused by a masonry fireplace. For a complete cleaning that includes the flue, consider using a chimney sweep service that will remove and remaining debris from your fireplace flue.

Reprint from Wells Fargo Home Mortgage newsletter, Fall 2008, Volume 5, Issue 3



***Nobody Knows Your Neighborhood
Better Than Your Neighbor!***

For Exceptional Service, Knowledge,
Integrity and Results.

Patti Eckard Broker, GRI, SRES
2621 Beechwood St.
339-5927 Cell
217-9304 Office
Patti.Eckard@gmail.com
www.EckardRealEstate.com



**REMEMBER
TO
VOTE
NOVEMBER
4**

continued from page 3

WHO TO CONTACT ABOUT CONSUMER SCAMS

If you or someone you know has become a victim of a Scam, Call:

The Police Department (In Greensboro, 373-2222. In High Po If you or someone you know has become a victim of a Scam, Call:

1. The Police Department (In Greensboro, 373-2222)
2. North Carolina Attorney General's Office
Consumer Protection Section
Post Office Box 629
Raleigh, NC 27602
1-877-566-7226
3. Federal Trade Commission (ID theft hotline) 877-438-4338.

Stop Credit Card Application Mailings And Telemarketers

To Stop Unsolicited Credit Card Applications

More and more people are finding their mailboxes jammed with credit card applications they never asked for nor wanted. If thieves steal these applications out of your trash, or out of your mail box, they can make out the applications in your name, receive the credit cards, and steal your identity.

Now you can call **1-888-5-OPTOUT (567-8688)** and end the deluge of these credit card applications. It takes up to two months to stop the mailings, but it's a free service and will end these intrusive mailings that could cost you your identity and take years to repair the damage to your credit.

To Stop Telemarketers From Calling You

You can register online at www.donotcall.gov or call toll-free, **1-888-382-1222 (TTY 1-866-290-4236)**, from the number you wish to register. Registration is free. Every year 25 million Americans, most of them elderly, get scammed. Because of this, and after reading numerous reports about hundreds of scams targeting the elderly, Bob Boyd, an Information and Referral Specialist, accredited by AIRS (Alliance of Information and Referral Specialists), began giving presentations to forewarn and forearm seniors against scams and fraud. Bob has spoken to thousands of seniors in Guilford County about scams and scam prevention. He has presented at seminars, churches, senior centers and to other concerned groups. He speaks about organized crime in Canada, Biker Gangs who phone seniors in America with fake lottery scams and other ploys. His presentation exposes the many other scams and fraud attempts against older Americans perpetrated over the phone, in person, and through the mail. His goal is to empower seniors to resist victimization. If you would like Bob to present about scams at your organization, seminar, or church, call him at **336-373-4816**. His service is part of his job at Senior Resources of Guilford and there are no charges for his presentations.

Bob Boyd Senior Resources of Guilford **373-4816**.

FALL FEST
SATURDAY
OCTOBER 18
4:30 - 7:30
Corner of Lindell
and Springwood



BRINGING BUYERS AND SELLERS TOGETHER

ALLEN MILLER
BROKER/REALTOR

PHONE: 336-855-1120

CELL: 336-215-8088

E-MAIL: AMILLER@TRIADPREMIERREALTY.COM

WEB: TRIADPREMIERREALTY.COM



3711-B WEST MARKET ST.
GREENSBORO, NC 27403

28TH Annual Crop Walk

Sunday, October 19, 2008
 Main Walk
 NewBridge Bank Ball Park, downtown

Registration: 1:30 PM

Walk: 2:30 PM

Contact: CROP Hunger Walk Office, **336-271-5959**

Congregations, businesses, civic clubs, and other groups are invited to pick up their registration materials and learn all about the 2008 Greater Greensboro CROP Hunger Walk.

This will be the 28th annual CROP Hunger Walk in Greensboro. Since 1981, this walk has raised nearly \$4 million to fight hunger at Greensboro Urban Ministry and around the world through Church World Service. Of the 2,000 CROP Walks held in the U.S. each year, the Greensboro Walk ranked #2 in 2007! This year our goal is to be the #1 Walk in the country by raising \$250,000 and beating close rivals Charlotte and Durham. We hope to raise a significant amount of funds by "Walking on the Web" and using online giving.

EARLY VOTING LOCATIONS NEAR LINDLEY PARK

Oct. 16-17, 20-24, 27-31

8-5pm, **Old Courthouse** - Blue Room
 301 W. Market St., downtown GSO

Additional Sites/Times/Locations

Oct. 19, 12-4pm,

Oct. 20-24, 10am-6:30pm

Oct. 24, 10am-3pm

Oct. 27-31, 10am-6:30pm

Nov. 1, 10am-1pm

Bur-Mil Club

5834 Bur-Mil Club Rd.

Leonard Recreation Ctr.

6324 Ballinger Rd.

Oct. 25, 10am-3pm

Oct. 27-31, 10am-6:30pm

Nov. 1, 10am-1pm

Friendly Shopping Ctr. - next to

Barnes & Noble

Greensboro Coliseum



Key's Barber Shop
 2206 Walker Avenue
 (near Elam)

Haircuts
for Men, Women
and Children

Styles Available
Men and Women

W a l k - i n s

Jerry & David
2 7 4 - 5 7 5 2



—Waking Up Greensboro—

*Wind Up in a Relaxing
Place*

Tate Street Coffee House

Offering Gourmet Coffees,
 Excellent Espresso Drinks, and
 Delicious Desserts.

Join us for
 Sunday morning jazz

334 S. Tate Street
 (next to The Exchange)
 Monday - Saturday: 7am-11pm
 Sunday: 8am-11pm

Owned and Operated by Your
 Lindley Park Neighbor



2419 Spring Garden St

HOURS:
11:00 am - 2:00 am
7 days a week!

FULL SERVICE PATIO
DAILY DRINK
SPECIALS

- OWNERS -
Lindley Parker - Chris Martin
and David Essa

How to Read Your Own Palm

By Carly Young, Special to LifeScript

Dating all the way back to 2,000 BC, the art of palm reading has firm roots in new age and astrological lore. Previously associated with Gypsies and evil magicians, this ancient art was once shrouded in mystery and fear. In modern times, however, palm reading is associated with pure fun. Whether you believe that your hand is an accurate indicator of personality traits or are a skeptic, you'll have a fun time reading your own palm.

You have three main lines on your palm, each which indicates a separate area of your life. Your love line is the line on the top, your head line is in the middle, and your life line is on the bottom.

Unlike your zodiac sign, which you're born with, the lines on your palm are not fixed from birth.

As you progress through your life, your palm lines will form and change according to your personality and experiences. Therefore, your life determines what your palm looks like, rather than the appearance of your palm determining your life.

For example, a traumatic emotional event may result in a break in your head line.

Palm reading is not a form of fortune telling. It won't tell you what will happen in your life, rather, it will re-tell you what has already happened.

Your Love Line

Your love line, also known as your heart line, relates to all the emotions and situations that are associated with love.

This line is above your head and life line. It begins under your index or middle finger and extends toward your pinky.

How to read your love line:

If the line starts directly underneath the index finger, then you are content with your love life.

If your line begins right below the middle finger, this indicates a selfish and materialistic outlook when it comes to love.

A line that begins between the middle and index finger signifies that you give your heart away too easily.

If the line is straight and short, you have a high sex drive and aren't particularly concerned with romance.

If the line points downward and touches your life line (which is on the bottom), then it's easy for you to have your heart broken.

A line that is long and curvy indicates that you freely express your emotions and feelings.

A love line that is straight and parallel to the head line indicates that you have a good handle on your emotions.

Variations on the love line:

If your love line is wavy, you may have a slew of relationships and lovers, but a lack of serious relationships.

continued on page 9



HOPE CHAPEL

IN THE CITY. FOR THE CITY.

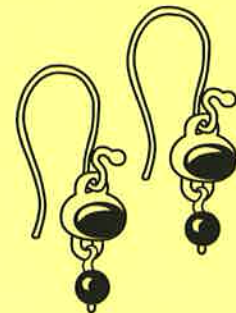
a new missional christian
community meeting at
Lindley Elementary School,
Sundays at 10:30am.

www.hopechapelgreensboro.org



SISTERS

Jewelry & Gifts



Sterling Silver, Amber,
Turquoise &
Gift Cards

330 Tate Street
574-3889
Mon- Sat 10-6:30



Have you been wondering,

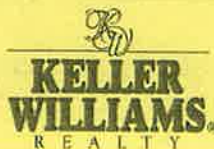
"How much is my home worth?"

Find out today by visiting us online at:

www.LindleyParkHouseValue.com



Andy Leung
(336) 508-1111
AndyLeung@kw.com



Dunkin Donuts Neighborhood Zoning Update...

Below is a draft of the letter that the neighborhood will present to the Zoning Commission. meeting. Once you read the details of the letter common sense will tell you that traffic will directly affect our neighborhood. However, the Planning Department has recommended that the zoning be changed to allow a drive-thru. **The Zoning Commission meeting is October 13, beginning at 2:00 pm. Melvin Municipal Building, City Council Chambers. We are the first item on the agenda and we need a crowd. If you can possibly stop by, we need you.**

The letter is as follows:

We are writing to express our objections to Rezoning case Z-08-10-001.

On May 27, 2008, Jeffery Nimmer of Kotis Properties attended the general meeting of the Lindley Park Neighborhood Assoc. to share and discuss their proposal. We appreciate their openness but there were no concessions made. They stated that a drive-thru was a mandate from Dunkin Donuts. (The store at Wendover and Cridland has NO drive-thru).

LPNA passed a motion that evening opposing the addition of any drive-through uses on the property at the corner of Holden and Spring Garden.

The Lindley Park Neighborhood Assoc. has three (3) main objections to this re-zoning proposal. Our main objection is to the drive-thru. This corner is the beginning of and in the Spring Garden PEDESTRIAN Overlay District that this commission and city council passed and put into effect. City of Greensboro Urban Planner, Mary Sertell recently received a state award for the project. The owners of this property were invited and were involved in the planning of the SGPOD. In no way does a PEDESTRIAN Overlay District encourage drive-through's. Bike racks, lanes, and side walks have been added to the area to make it more walkable. Our second objection also is a product of the drive-thru. The traffic patterns that WILL form due to the drive-thru and parking arrangement that are illustrated in the petitioner's site plan. The site plan shows ALL traffic into the shopping center entering from a left turn off of Spring Garden. ALL traffic exiting the center will turn right on to Holden. This is fine if they were all traveling north on Holden. Any traffic needing to go south on Holden, or east or west on Spring Garden will be forced to either make a u-turn from the turn lane into the Masonic Home. The other and more likely scenario is that the lion's share of that traffic will turn right and cut-through on Peebles and Collier to get back on Spring Garden to Holden. Peebles and Collier are narrow winding roads with on street parking along both sides of the street. There have been many young families with young children move to and play in the area in the past several years. (Neighborhood is turning over with young families settling in) These roads were not built to handle any cut through traffic, they are not feeder streets, and they are strictly for residential traffic. Aside from the traffic issues on Peebles and Collier, there will be considerable traffic attempting to use the left turn lane (toward the Masonic Home) as a U-Turn. Neither of the traffic situations will enhance the safety or drivability of the area.

We have no objections to a Dunkin Donuts or any other eatery. I am sure the Lindley Park neighbors will support any quality establishment that occupies the site. The petitioner will say they can only open with a drive thru. Again, their newest store on Wendover and Cridland does NOT have a drive thru. The drive thru and post drive- thru's traffic patterns are our concern.

Looking forward, if Dunkin Donuts were to open and close with the drive-thru condition, a higher traffic, later hours drive through restaurant could open without any approval.

"Reading Your Palm," continued from page 7

A circle on the line refers to a time of depression in your life. Likewise, a broken heart line indicates emotional trauma, as does a heart line with smaller lines crossing through it.

Smaller lines that stretch above the heart line are reflective of happiness in love, but lines that stretch down from the heart line indicate disappointment.

Your Head Line

This line doesn't deal with how smart you are, but rather how you think. It can indicate your beliefs, morals and general attitude toward life. (See related story: Staying True to Your Belief System)

This line begins right above the life line (also, remember that it's below the heart line) and travels across the palm.

How to read your head line:

A short line shows that you prefer working toward physical achievements rather than mental ones. A curved, sloping line indicates creativity.

If your head line and life line are separated, you enjoy the taste of adventure and have great enthusiasm for life.

A wavy line shows that you have a short attention span and don't enjoy deep thinking.

If you have a deep, long line that stretches horizontally across the palm, then your thinking is clear and focused. The straighter the line, the more realistic your thinking is.

Variations on the head line:

If you have a donut or cross in your head line, this indicates that you've been through an emotional crisis.

A broken head line indicates that you are inconsistent in the way you think and may have even suffered a nervous breakdown.

Multiple crosses through your head line represent momentous decisions in your life.

Your Life Line

This line starts on the edge of your palm, in between your index finger and thumb. It extends down your palm. Situated below your heart and head lines, this line will tell you about the quality of your life.

How to read your life line:

A life line that runs close to your thumb indicates that you are often tired.

If your line is curvy, you have a lot of energy.

A long, deep lifeline indicates that you'll have a long, healthy life filled with vitality.

If the line is short and shallow, then it may indicate that you let others control your life for you.

If the line swoops around in a semicircle, you have tremendous strength and enthusiasm.

If the line is straight and stays close to the edge of your palm, you are cautious when it comes to relationships and often hold back from love.

If you have two or even three life lines, then this means you have extra vitality and positivity around you.

continued on page 10

**LINDLEY PARK
HOME & LAWN SERVICE**

Lawn Services

- Mowing (as low as \$30)
- Shrubbery
- Over-seeding
- Aerating
- Edging
- Leaf-mulching or removal

Home Service

- Roof-Washing
- Gutter-cleaning
- Minor carpentry
- Window-washing

Doug Willard

Cell: (336) 908-1425 Home: (336) 656-3622

References provided upon request

**Gene's
Barber Shop**



2412 Spring Garden St.

*Established in 1956 - 50 years
of service to the neighborhood.
Walk-ins welcome or call for an
appointment.*

299.8669

**Tuesday - Friday 8:00-6:00pm
Saturdays 7:30-3:00pm.**

**At Your Service; Frank Dorrity,
Ben Ma, Jim Nelson, Bill Young
& John Ma**

FRESH BAKED BREADS • SCONES

MUFFINS • CROISSANTS • WHOLE WHEAT BUNS AND TWISTS • BAGELS

NOW OPEN SUNDAYS

FREE Wi-Fi

**HOMELAND CREAMERY
ICE CREAM**

**MON-FRI: 7AM-6PM
SAT 7AM-2PM
SUN: 8AM-2PM**

1932 SPRING GARDEN ST.
(NEXT TO HOLLIDAY'S HARDWARE)
TEL: 336 272-8199

LUNCH TRIANGLES • GREEK BUNS • HOMEMADE GRANOLA • BROWNIES
TAHINI COOKIES • FRUITBARS

continued from page 9

Variations on the life line:

A circle in your life line indicates that you were hospitalized or injured. A break indicates a sudden change in lifestyle, such as an accident, illness or heartbreak.

If you have lines that extend up and beyond your life line, then you are good at recovering from bad situations, but if you have lines that extend below your life line, you tend to waste energy.

Interpreting your love, head and life lines in palm reading can be a fun game to play with your friends, not to mention a great conversation starter at a party. So whether you take this art seriously or are just curious to see if your hand accurately reveals your personality, take a look and see what your palm says about you.

Or, examine the palms of your friends to gain insight into their past and emotions. Pretty soon, you'll have all the knowledge about their lives in the palm of your hand!

Greensboro Neighborhood Congress (GNC)

Meeting Notes -- Saturday, September 14, 2008

Business Meeting of the GNC:

Denise Turner, representing the Greensboro Partnership, encouraged voting for a proposed November 4 local 1/4-cent sales tax increase and various local bond proposals categorized as Transportation, War Memorial Auditorium, Parks & Recreation, and Housing.

Beth McKee-Huger, representing the Greensboro Housing Coalition, encour-

aged voting for a proposed Greensboro City Housing Bond intended to reduce a number of foreclosures through homeowner counseling, home purchase assistance, and housing rehabilitation, to make up for anticipated federal housing fund shortfalls.

Todd Rotruck, GNC representative to the City of Greensboro Rental Unit Certificate of Occupancy (RUCO) Board, encouraged support of a RUCO Board recommendation for a system of automatic RUCO renewals except in cases where there is a RUCO violation triggered by a citizen's rental housing complaint, and continuation of fees for violations.

Discussion included concern that a citizen-generated RUCO complaint system might not be as effective as necessary. An alternate motion was made and passed to support annual RUCO reinspection of any residential rental properties that had previous RUCO violations, plus development and implementation of a random sample system to reinspect 10% of previous RUCO inspections, plus a system to identify and inspect new rental properties.

The next meeting of the Greensboro Neighborhood Congress is Thursday, October 9, 2008, 7-9 pm Presbyterian Life Center of First Presbyterian Church in the 700 block of North Greene Street. Topic is a public Forum with Greensboro Police Chief Tim Bellamy. Included will be remarks by "Mo" Greene, our new Superintendent of Guilford County Schools. Notes submitted by Ann Stringfield of the Fisher Park Neighborhood,



Lindley Park Baptist Church

A Church in and for Lindley Park

Sunday School - 9:45 am
Worship - 11:00 am
Wednesday Bible Study - 6:45 pm

Rev. Scott Orr, Pastor

At the corner of Holden Road and Walker Avenue, (p) 292-5761



"Sissor Talk"

**Foils, Highlights
Shampoos, Cuts, Styles**

**Appointments or Walk-ins
Tues-Fri 9am-5:30pm
Sat 9am-2pm**

*Mention or bring this ad and get
10% off any service.*

**Teresa Welborn
852-5059**

**Shoppes @ Lindley Park
2823-H Spring Garden St.**

903

The Ross House *West Market St.*

Bartenfield
INJURY LAW, PLLC

533-5334

Beginning Balance		3879.27
Revenue		
Contributions	65	
Yard Sale	0	
website	0	
adv	0	
Total Revenue	65	

Expenses		
Newsletter	625.95	
History Books	242.63	
Carolina Peacemaker	38	
Total Expenses		906.58

Balance \$3037.69

So, at the end of September we are in the black and have more money than Ford, GM, and 10 trillion 3037.69 more dollars than the US Government.

Our revenue comes from the Advertisers in the Columns and the generous contributions by the neighbors listed on page 12.

Thank you so much!

"DON'T KICK THE TURKEYS"

Friday, October 24
@ 7:00 p. m.
Saturday, October 25
@ 3:00 and 7:00 p. m.
Sunday, October 26
@ 3:00 p. m.

Crosslove Theatre, domiciled at Lindley Park Church, 4010 Walker Avenue will present the light hearted comedy, "Don't Kick the Turkeys" at the above dates and times. You'll split your sides at the rollicking antics, trials, tribulations and hazards of being the pastor of a church. A laugh a minute is guaranteed! This play is directed by Ethan Roberts and has a cast of young, but very experienced actors. Yes, real live actors! Treat your family to some good clean entertainment fun and the best part of all, it is free of charge! That's right, no admission charge (however, donations are accepted.) So, pick your date and time, put it on your calendar and discover what joyful entertainment is available right here in the middle of Lindley Park.

Columns Locations

The Columns is hand delivered by a terrific group of volunteers.

Extra copy? You can pick one up at the following locations:

- * **Bestway** *
Walker Ave.
- * **Gene's Barber Shop** *
Spring Garden St.
- * **Friendly Bike** *
Spring Garden St.
- * **Spring Garden Bar & Pizzeria** *
Spring Garden St.
- * **Tate Street Coffee** *
Tate St.
- * **Sisters Jewelry & Gifts** *
Tate St.
- * **Lindley Recreation Ctr** *
Springwood Dr.
- * **Lindley Park Baptist Church** *
Holden and Walker



Let PMI's professional protection and award winning customer service send your pests packing!

Our services include:

- Pest Management
- Termite Management
- Moisture Control
- Mosquito Management



Let us be your pest management professional of choice.

Serving the Triad since 1984
336.272.4400
www.pestmgt.com



**Advanced Energy

GUY P. HARTY PLUMBING

"Specializing in Older Faucet's and Fixtures!"

336.549.3440

336.856.9640

Licensed . Bonded . Insured

2008 LPNA SUPPORTERS AS OF SEPTEMBER

Listed below are names of Lindley Park supporters who made a financial contribution to the Lindley Park Neighborhood Association. The list is current as of this issue of the Columns. With your support we're able to sponsor the Children's Easter Egg Hunt, the Spring Fling, Fall Fest, and we light up the Park with Holiday Luminaries. Your contributions helped launch our new neighborhood website as well. Again, ***your financial support is so very important, so very much appreciated and truly makes a difference.***

Jack & Annemarie Atchison
 Jerry & Anne Baumgartner
 Gertrude Beal
 Joy & Bob Becher/Richardson
 Shera & Jack Bilisoly/Osborne
 Charlotte & Cody Byrd
 Chris Byrd
 David & Jane Byrd
 Tim & Theresa Byrd
 Greg & Allison Chabon
 Joann & Michael Davis
 Stan & Cynthia Dixon
 Claire, Miles & Watts Dixon
 Jodi Dodson
 Ruth Doggett
 Sheila & Robert Duell/Bellomy
 Patti & Bill Eckard
 Steve & Joyce Eury
 Ann & Matt Fitzmaurice-Russ/Russ
 Barbara Gehrke

Porter Gibson
 Barry Goldman
 John & Maria Hayes
 Charlie & Debra Hertlein
 Michael Horney
 Cynthia & Jonathon Jefferson
 Jo Leeds
 Elizabeth & Henry Link
 Gerald & Jennifer Martin/Kramer
 Stephanie McGovern
 JP & Palmer McIntyre
 Theresa & Ron Miller
 Shirley Morrison
 David & Mary Ann Murray
 Mr. & Mrs. Arch Nash
 Emily & Roy Nilsen
 John & Patti Raxter
 Staci & Daryl Ryan/Morelli
 Nancy Pederson
 Jeffrey & Lynn Sasser

Bill & Michelle Schneider
 Brooke & Murphy
 Schwaberton/Townsend
 Carolyn & Moreland
 Shankle/Smith
 Nora Shively
 Mike Simons
 Michelle & Ronnie Smith
 Norman Smith
 Lauren & John Smith/Kelly
 Julia & Glenn Smith/Perkins
 Ken & Dyan Snowden/Arkin
 HJ Stark
 Susan & Hank Taaffe/Rudisill
 Charley Talley
 Rebecca & Michiel
 Vandersommen
 Monica Vaughn
 Satomi Yamashita

Calendar

OCT 13 - Zoning Commission Mtg. - 2pm, City Council Chambers - Zoning Request Change for Holden/Spring Garden St.
OCT 16 - EARLY VOTING BEGINS
OCT 18 - Fall Fest - 4:30pm/7:30pm-Corner of Lindell/Springwood
OCT. 19 - CROP WALK, New Bridge Bank Park, downtown
 1:30pm Registration, 2:30 Walk Begins
OCT. 31 - HALLOWEENNNNNNNNNNNN !!!!
NOVEMBER 2 - "Fall Back" on Daylight Savings - Turn your clock back and get another hour of sleep!
NOVEMBER 4 - ELECTION DAY - GO VOTE!

DECEMBER 6th - Light Up the Park with Luminaries. Please save this date ! More details in next issue.

2008 LPNA CONTRIBUTION FORM

Now's a good time to make a contribution to your neighborhood association. Please fill out the form and mail it with your check to the address listed below. If you'd like to be involved with any of the committees, or activities, please check your preference. **Note: New committees added: Website, Ways & Means (FUN-raising activities), Neighborhood Long-Range Plan.**

Name(s) _____ Address: _____

Email: _____ Home Phone: _____

Please check your interest(s): Environmental Issues FUN-raising Park preservation/improvements Website
 Public Safety/Public Works (speeding, burglary, sidewalks, etc) Zoning Issues Neighborhood Long-Range Plan
 Social activities (spring, fall events & Christmas luminaries) Newsletter volunteer -- help distribute in your area

\$\$ household contribution enclosed (\$15 suggested) \$ _____ Date: _____
 Please make checks payable to LPNA and mail to: LPNA c/o Dyan Arkin, 635 Scott Ave. Greensboro NC 27403