

COLUMNS

February 2017



LOVE LINDLEY!

THE LINDLEY PARK
NEIGHBORHOOD ASSOCIATION
NEWSLETTER
LINDLEYPARKNC.COM

What do you love about winter in Lindley Park? Maybe it's living within walking distance of a grocery store and restaurants when the snowstorm hits. Maybe it's making the annual pilgrimage to Sled Hill behind the elementary school. This issue is packed with stories to warm your heart and details about a neighborhood family dance to get your pulse racing!

Photo: Steve Eury

LPNA TEAM



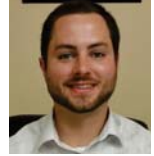
STEPHEN JOHNSON

Chairman
chair@lindleyparknc.com



BILL ECKARD

Govt/Community Liaison
bill@billeckard.com



ADAM SPIVEY

Vice Chairman
nspivey@elon.edu



JOSH SHERRICK

Events and Celebrations
joshuasherrick@gmail.com



ANNE EMBREY

Secretary/Communications
amebrey@gmail.com



ELIZABETH LINK

Healthy Neighborhood
elizlink04@gmail.com



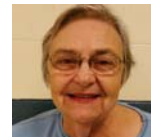
BLAKE SAGAR

Treasurer
bsagar@cfmccpa.com



KATHY NEWSOM

Newsletter Editor
kathyhouseofhope67@gmail.com



MARY ALICE AUSTIN

District One Representative
austingreensboro@aol.com



PATTI ECKARD

Newsletter Advertising
patti.eckard@gmail.com



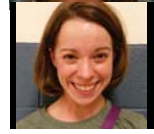
AMANDA MEDENDORP

District Two Representative
ajmedendorp@gmail.com



JOYCE EURY

Newsletter Distribution
joyceury@gmail.com



REBECCA MEDENDORP

District Three Representative
beccaboone@hotmail.com



SUSAN TAAFFE

Neighborhood Congress Rep
susantaaffe1@gmail.com

OPEN

District Four Representative



NEWSLETTER

The Columns is published by the Lindley Park Neighborhood Association. Hand-delivered copies go to more than 1,200 households in the area. If your street does not receive the newsletter, we probably just need a volunteer to deliver it! Contact Joyce Eury about delivery at joyceury@gmail.com.

The Columns is posted digitally at www.lindleyparknc.com. Sign up to get it by email by contacting us at lpnagso@gmail.com.

The Columns also can be found at Bestway, Gene's Barber Shop, Lindley Rec Center, Spring Garden Bakery, the Corner Farmers Market and Common Grounds.

GOT IDEAS?

Of course you do! We want to hear from everyone! Send stories, ideas, photos, history or questions to Kathy Newsom at kathyhouseofhope67@gmail.com

DANNY'S TIRE & AUTOMOTIVE CENTER

YOUR LINDLEY PARK NEIGHBOR SINCE 1988

FAMILY OWNED AND OPERATED

COME MEET YOUR NEIGHBOR

VISIT OUR WEBSITE FOR MORE INFORMATION

www.dannystireandauto.net

MENTION THIS AD AND RECEIVE \$5 OFF NC STATE INSPECTION

1112 PARK TERRACE

8-5 MONDAY - FRIDAY

336-292-1226



LOVELINDLEY: NEIGHBORHOOD FAMILY DANCE PARTY

By Shaun O'Connor

Hey, neighbors! It's the dead of winter and we all need to get out and heat things up a bit. Come on down to the Lindley Recreation Center on Saturday night, Feb. 11, from 6:30 to 8:30 to show your love for the neighborhood.

Love Lindley is a chance to shake a leg with your friends and neighbors and keep the positivity flowing in our beautiful neighborhood. Not a big dancer? That's OK! Come for some snacks and refreshments and maybe meet a new neighbor or two. DJ Danny will be in the house spinning a mix of old school and new tunes.

Love Lindley is absolutely a family-friendly event so bring the kids so they can show off their sweet dance moves. Admission is free but we'll take small cash donations at the door to benefit the Lindley Park Neighborhood Association.



WANT TO GO?

What: Love Lindley Family Dance Party

When: 6:30 to 8:30 p.m. Feb. 11

Where: Lindley Park Recreation Center, 2907 Springwood Drive

Phone: (336) 373-2930

To See All Homes Listed For Sale
In Lindley Park

Go To
www.BuyLindleyParkHomes.com



Andy Leung
336.508.1111
Andy@TeamLeung.com



**Gene's
Barber Shop**
2412 Spring Garden
299-5669



Established 1956.
53 years of service to the
neighborhood.
Walk-ins welcome or call for
appointment.
Tues.-Fri., 8 am - 6 pm
Sat. 7:30 am - 3 pm

At your service:
Frank Dorrity, Ben Ma,
Jim Nelson, Bill Young,
John Ma

The Dailey Renewal Retreat

Bed and Breakfast

808 Northridge Street
Greensboro, NC 27403

336-451-7742

www.daileyrenewalretreat.net



4 LINDLEY LOVES TO HELP

SNOW DAY DELIVERS FEAST FOR THE HUNGRY

On Jan. 6 the forecast called for snow — possibly a lot of snow, starting that night. While making the requisite Bestway run for weekend essentials, Palmer McIntyre ran into a neighbor whose weekend outlook was not so cozy. Michelle Kennedy, the director of the Interactive Resource Center, said that feeding programs would be shutting down for the next few days because of the snow and single-digit temperatures. The IRC would remain open, but the center was struggling to find a way to feed more than 90 folks and families who count on meals.

Palmer didn't just offer her help. She also posted a call to action on the Lindley Park Facebook page. Would anyone join her in making a pan of ziti or a pot of spaghetti? The directive was to drop it off at Michelle's home on Sherwood Street to be taken to the IRC.

Within minutes neighbors chimed in their support on Facebook. By the next day, homemade meals, breads and desserts showed up on Michelle's porch. The power of community and social media allowed our neighborhood to meet the need and the IRC was able to feed everyone who took shelter in the storm.



MLK DAY OF SERVICE: CLEANUP LINDLEY CAMPUS

Lindley Junior Girl Scouts (Troop 02483) collected heaps of trash from around the Lindley Elementary campus as part of MLK Day of Service. Interesting finds: a golf club, pillows, bandages, water bottles and more. Here's to girls making the world a better place!

YOUTH BOOK DRIVE FOR IMMIGRANT FAMILIES



The first week of January, Laura Moodie put out a box and a sign, "Youth Book Drive," in her yard. Then it snowed 8 inches.

Laura works through Americorps for Church World Services to help refugee families in Greensboro. The books she hoped to collect were to be used in literacy programs for refugee children who are students at New Arrivals Institute. All grades and reading levels were needed. But the box was covered in snow.

But the community came through. "I was pretty surprised to see footprints in the snow around the book box," she said. "But I was thrilled when I opened it and saw that it was full of books!" To find out more, contact Jazmine at Volunteernc@cwsglobal.org

STOCKING THE PANTRY FOR SOME OF GREENSBORO'S NEWEST NEIGHBORS

Yet another call for donations came around the time of January's storm.

Hana Brown let neighbors know that Guilford College's Every Campus a Refuge program had been alerted that it would be hosting a family very soon. It was a big family, with two parents and nine children from ages 19 to 10 months. And they would be starting from scratch.

Hana shared a list of grocery and toiletry items needed. Within two days her porch was full. Once again, we see the power of community and social media to generate goodwill and generosity. To find out how you can help Guilford College's Every Campus a Refuge program, email everycampusarefuge@guilford.edu



6 LINDLEY LIGHTS UP THE NIGHT

ANNUAL LUMINARIA LIGHTING



Philip Gorham and Dortch Mann fill some of the 1,000 bags that lined the streets for the annual luminaria lighting in December.

In Lindley Park we sure know how to decorate our homes for the holidays. From simple Moravian stars to blow-up characters, our neighborhood sure is pretty around the holidays. And because we live next to the nationally famous Sunset Hills neighborhood of lighted balls, we can enjoy quite a spectacle every December.

But one night a year is extra special in Lindley Park. The first Saturday in December all the Girl Scout troops in Greensboro light luminarias at the Arboretum. Additionally, the Lindley Park Neighborhood Association sets luminarias onto the Walker Avenue bridge and throughout the neighborhood. According to Head Luminarian Bill Eckard, this year the LPNA set out and lit 1,100 luminaries.

Thanks to the many neighbors who came out and brought the family for this annual lighting of Lindley Park!




GOOD FOUNDATIONS
HOME INSPECTIONS

Your neighborhood home inspector

\$50.00 OFF
WHEN YOU
MENTION THIS AD

Scott Hawks
336.207.9538
Scott@goodfoundationsllc.com
www.goodfoundationsllc.com



HOPE CHAPEL
IN THE CITY. FOR THE CITY.

Sundays at 10:30am
1825 Spring Garden St
(behind The Blind Tiger)
hopechapelgreensboro.org

Norman B. Smith
Smith, James, Rowlett & Cohen, LLP

Provider of competent, efficient and affordable legal services since 1965.

101 S. Elm Street, Suite 310
Greensboro, NC 27401

Tel: (336) 274-2992
Email: normanbsmith@earthlink.net

BARRED OWLS

By Elizabeth Link

I was walking in the neighborhood at dusk recently when I heard a Barred Owl calling. Before the days of phone apps or readily available recordings of bird calls, the way to remember the call of the Barred Owl was the query, "Who cooks for you? Who cooks for you all?" which mimics the rhythm of the owl's call. Barred Owls choose their mates in late fall and early winter, and they call a lot during the process. They establish nests and usually lay their eggs sometime between December and March. The eggs hatch about a month later, and the young fledge about a month after that.



Barred Owls like to nest in cavities in trees, so the many large older trees in our neighborhood may be what attract them to the area. Their main food is mice, voles and other small mammals, but they will also take squirrels, rabbits, and occasionally other birds. In addition they will eat crickets and other large bugs, and sometimes will wade into shallow streams to catch crayfish, small fish and frogs. While their traditional habitat has been old growth forests with large, mature trees, they also thrive in suburban areas where there are large trees to roost and nest in and enough parks and gardens to provide a plentiful supply of food.

Owls are mostly active at night. During the day they will usually roost quietly in pine trees or vine-covered trees where they are difficult to see. If a group of crows finds an owl they will gather around and make a lot of noise, cawing and diving at the owl in the hopes of driving it off or at least alerting the bird neighborhood that it is there. They will also do this to hawks. If you want to see big raptors, look for those groups of excited crows.

The most likely time to see a Barred Owl in the open is in the spring, when their young leave the nest. The young owls are almost as large as the adults then, but they're fuzzier, and they won't be able to fly for another few weeks. The adults are active during the day. They feed their young and hang out in nearby trees to keep an eye on them. The young owls will hop from branch to branch and make short flights between trees as they build up their flying muscles. Sometimes the flightless young will end up on the ground. If you find a young Barred Owl on the ground, it's best to leave it alone — they usually can climb back up a tree by using their beak and claws and flapping their wings.



Tyler Redhead & McAlister
REAL ESTATE

Leslie Stainback
REALTOR/Broker

336.508.5634 cell
336.274.1717 office
leslie.stainback@trm.info
www.trmhomes.com



To hear the call of the Barred Owl, see pictures and learn more about them, visit the Cornell Ornithology Lab at www.allaboutbirds.org/guide/Barred_Owl/sounds.

"SERVING THE TRIAD SINCE 1978"



**John Budd's
Chimney
Service LLC**

2523 WESTMORELAND DR.
GREENSBORO, NC 27408
TELEPHONE (336) 282-1150

JOHN BUDD

MEMBER OF NORTH CAROLINA GUILD #233
CHIMNEY SAFETY INSTITUTE OF AMERICA
CERTIFICATION #3675

BBB Member

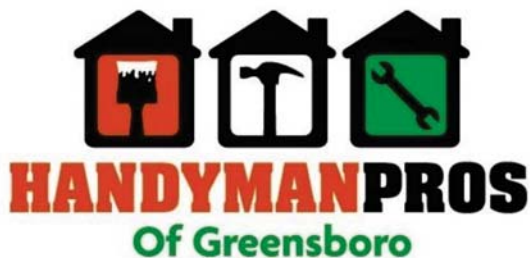


A REMINDER TO PICK-UP

By Ginny Gaylor

Many Lindley Park residents have enjoyed the privilege of sledding on the hills behind Lindley Elementary. But part of being a good neighbor is keeping our neighborhood clean. After the January snow there was a significant mess left on the sledding hill — pieces of sleds, hats, gloves, bottles and other trash.

Several former Lindley Elementary students—Jeb Barvir, Gabrielle Howard and Scevyne Johnson—helped clean up the mess that others left. It's important that we take responsibility for ourselves and our children to clean up to show respect for our community. It would be incredibly sad if the neighborhood left school grounds so littered again.



(336) 617-5182

www.HandymanProsGreensboro.com

Residential ♦ Commercial ♦ Property Management ♦ Real Estate

Inside, outside, & everything in between!

INTERIOR

- Painting & Wallpaper
- Drywall Installation / Repair
- Carpentry
- Doors & Windows
- Flooring
- Kitchen & Bath Remodel
- Insulation

EXTERIOR

- Painting
- Carpentry
- Decks, Pergolas, Patios
- Fencing & Railing
- Screened Porch
- Pressure Washing
- Siding Replacement / Repair

MISCELLANEOUS

- Energy Efficiency Upgrades
- Repair Assembly & Maintenance
- Due Diligence Repairs
- ADA Upfits & Remodels
- Moisture Control
- Sealed Crawl Spaces



12 MONTHS
INTEREST FREE FINANCING*

Ask us about our
Annual Maintenance Agreements

SLEDDING HILL

By Jenna Gerber

Growing up in the South, I always thought a big snowfall was very rare and completely magical. While the world turned quiet and still, the neighborhood came alive as streets shut down and businesses closed. Neighbors went for walks, little kids made snow angels, and the big kids headed to The Hill. I remember the first time I got to go. I went with my big sister and her boyfriend, who insisted it was the best place to sled in Greensboro. It was the biggest hill I had ever seen, and it was the scariest and most exciting sledding experience of my life. It was the winter of 1987, and I was 9 years old when I conquered The Hill.



Thirty years later, a big snowfall in the South means streets get plowed and only a few businesses close. But in Lindley Park, with our winding, hilly streets and few main roads, we catch a glimpse of a bygone era. Our streets shut down for at least one day, neighbors go out for walks, kids make snow angels, and everyone heads to The Sledding Hill. It's the old outdoor amphitheater site behind Lindley Elementary and is the snow day meeting spot for all our neighbors, young and old. It's where a fire is built so people can warm up a bit. It's where families pile on a sled and laugh their way to the bottom, it's where kids meet up with old friends and make new ones. It's where this 39-year-old gets to relive part of her childhood and watch as my own kids experience theirs.

The Sledding Hill is more crowded now than in 1987. Though the energy is electric and the air filled with the screams and laughter of so many, when I take a step back and look, the world has once again become quiet and still and completely magical. And though the name has changed slightly, The Sledding Hill is just as exciting as the very first time I went down it.



Photos by Steve Eury, Richard Wells and Christina Brown.



EMERGE

— skin therapy —



ADVANCED FACIAL TREATMENTS



MALE AND FEMALE WAXING



EYELASH ENHANCEMENTS

TO PURCHASE GIFT CERTIFICATES OR BOOK AN APPOINTMENT ONLINE GO TO
WWW.EMERGESKINTHERAPY.COM

106 E. WASHINGTON ST GREENSBORO, NC
336.553.0790



**LIKE US ON
FACEBOOK**

**POST YOUR
FAVORITE ITEM
FOR A CHANCE
TO WIN THAT
ITEM FOR
FREE**

always ★
shoot for ★
the moon!



Corporate Events | Theme Parties | Wedding Receptions
 Rehearsal Dinners | Buffet Dinners | Plated Dinners | Box Lunches
 Barbeques & Picnics | Full-Service Bars | Hors d'Oeuvres

1068 Boulder Road | Greensboro NC 27409
 Phone 336.218.8858 | www.PepperMoonCatering.com



First Moravian Church

304 S. Elam Ave., Greensboro
 336-272-2196
www.greensboromoravian.org

*"In essentials, unity;
 in nonessentials, liberty;
 in all things, love."*

Sunday School for all ages, 10 am
 Worship, Children's Church, 11 am

*Come worship
 with your neighbors!*

FIT 4 MOM

By Tara Wommack

Working out after having a baby can be tough, both mentally and physically, whether you're brand new to fitness or have previous fitness experience. A new business in town, FIT4MOM, takes away some of the challenges of working out after having kids.

FIT4MOM offers a variety of programs, including Stroller Strides, which allows moms to get a great one-hour full-body workout with the babies and kids in tow. Stroller Strides incorporates many fun activities to entertain babies and kids, such as bubbles, songs and rhymes and other interactive play from the moms and instructors. The program also focuses on functional fitness for women to gain strength and stability through challenging and fun exercise routines.

A core tenet of FIT4MOM is creating an environment for moms to meet, support each other and enjoy the company of others who are experiencing the same joys and challenges of motherhood. With free weekly playgroups, Mom's Nights Out and Quarterly Missions, moms gain a sense of place in the community and a sense of self nurtured in the FIT4MOM village.

Throughout the chilly winter months of December, January and February, the workouts are all indoors, thanks to support from REI and the Greensboro Parks and Recreation Department. On Mondays, the workout starts at 9 a.m. in the REI store at Friendly Center. On Wednesdays and Fridays, the workouts begin at 9 a.m. at the Lindley Recreation Center located on Springwood Avenue.

Workouts will be held outdoors starting in March (weather permitting) at the Greensboro Arboretum at 9:30 a.m. on Mondays, Wednesdays and Fridays. Additional times and locations will be added to the spring schedule as well. You can stay up to date on these new offerings by visiting the website and setting up a free account.

WANT TO LEARN MORE?

For more information about FIT4MOM programs, to receive the monthly newsletter and to find out how to enroll in classes, visit westgreensboro.fit4mom.com.



Richardson Classic Renovations



Scott Richardson 209-1080

Bob Richardson 253-6147

web: richardsonclassicrenovations.com

mail: richardsonclassicrenovations@gmail.com



Worship with us
Sundays at 11 a.m.
Gathering to worship ...
Departing to serve.

Lindley Park Baptist Church

**BERKSHIRE
HATHAWAY**
HomeServices

Sue Catherine
REALTOR®



Yost & Little Realty
1103 North Elm Street, Suite 100
Greensboro, NC 27401
336-908-4196 M 336-272-0151 O
336-714-6750 eFax
Sue.Catherine@BHHSYostandLittle.com
www.SueCatherine.BHHSYostandLittle.com

A member of the franchise system of BHH Affiliates, LLC

COMMON GROUNDS
Coffee | Espresso
Wine | Beer
Live Music
Gallery
Arcade

502 S Elam Ave | 336-698-3888
facebook.com/CommonGroundsGreensboro



ONE CALL
home inspections

\$50 RADON TESTING WITH THIS AD
NORMALLY \$125

**LINDLEY PARK RESIDENT AND
OLDER HOME SPECIALIST**

Steve Cauthen
336-509-3469 • steve@onecallinspect.com
www.onecallinspect.com



ERS
Energy Reduction Specialists
of
North Carolina

*Saving Energy.
Saving Money.
Everyday*

336.643.9199

www.ERSofNC.com



• A more comfortable home with less drafts and a more consistent temperature

• Lowered utility bills

• Improved indoor air quality

• Reduced waste and pollution

• Extended life of your heating and cooling equipment

• Increased value and improved marketability of your home

• Environmental stewardship

• Lower your carbon footprint

Call or email Gary Silverstein (Gary@ersofnc.com) or Paul Swenson (Paul@ersofnc.com) to schedule your energy assessment to see how we can help you

LINDLEY PARK HOME SALES SOAR IN 2016

By Patti Eckard

I've tracked home sales in Lindley Park over the past 16 years, and 2016 proved to be just as challenging as previous years. While we sold more houses in 2016, the houses on average were smaller. Average list and sale prices rose, but it took longer to sell Lindley Park houses. The average was 97 days.

Sellers were able to net 96.6 percent of their list price. Considering we had several houses to sell as foreclosures, or "as is," sales stayed strong in our neighborhood.

With spring just around the corner, we will be moving into our busiest time for selling. Spring is traditionally when more buyers start searching. If you are thinking about putting your house on the market, use this slower time to get your house ready. Consider a pre-listing home inspection to make sure your home has no hidden problems. Freshen up the inside with paint. Clean out closets and attics of unwanted or needed items. Work on your curb appeal. Most importantly, be realistic about your expectations. Remember, it always takes longer to get your house ready than you will think. And make sure your price is competitive.

Lindley Park will continue to be a sought-after destination for many prospective homeowners. Besides the obvious — tree-lined streets, the park, sidewalks, walking distance to restaurants, stores and an elementary school — we truly do have a sense of community. Folks stop to talk with their neighbors when they're out walking. Residents keep a watchful eye and sound the alert over suspicious activity. Found dogs are kept safe until owners are found. Parents feel comfortable letting their children walk and ride their bikes on the sidewalks. Life is good in Lindley Park.

The following report on Lindley Park home sales since 2000 was compiled from the Triad Multiple Listing Service. It does not include For Sale By Owner homes.

LINDLEY PARK HOME SALES

BY Patti Eckard, REALTOR®,

YR	# Homes	Aver SQFT	AVER #BR	AVER #Full Baths	AVER # Half Baths	AVER #Garage Spaces	AVER Yr. Built	AVER List Price	AVER LP S/SF	AVER Closed Price	AVER CP \$/SF	AVER DOM (days on market)
2000	21	1505	3	1	1	1	1940	\$132,238	\$89	\$128,588	\$86	51
2001	38	1557	3	1	1	1	1941	\$139,676	\$92	\$136,164	\$90	71
2002	34	1441	3	1	1	1	1948	\$136,441	\$96	\$133,064	\$94	73
2003	36	1416	3	1	1	1	1942	\$138,872	\$100	\$134,105	\$96	73
2004	39	1458	3	1	1	1	1944	\$148,436	\$104	\$145,244	\$102	79
2005	56	1493	3	2	1	1	1947	\$155,284	\$105	\$151,378	\$103	67
2006	40	1382	3	2	1	1	1952	\$162,140	\$119	\$158,116	116	45
2007	39	1415	3	1	1	1	1944	\$164,723	\$118	\$160,049	\$115	42
2008	44	1443	3	2	1	1	1944	\$171,177	\$119	\$166,638	117	76
2009	38	1,571	3	2	1	1	1945	\$179,225	\$114	\$172,076	\$109	68
2010	36	1,482	3	1	1	1	1943	\$167,043	\$113	\$160,928	\$109	89
2011	29	1,504	3	2	1	1	1947	\$169,279	115	\$163,455	\$111	65
2012	43	1,662	3	2	1	1	1942	\$165,293	\$103	\$157,671	\$97.8	85
2013	26	1,668	3	2	1	1	1947	\$180,271	\$109	\$172,929	\$104.8	85
2014	39	1,635	3	2	1	1	1944	\$193,444	\$120	\$187,492	\$116	94
2015	37	1,512	3	2	1	1	1949	\$167,803	\$114	\$162,716	\$111	78
2016	55	1,476	3	2	1	1	1945	\$176,556	\$120	\$170,670	\$116	97

I've Sold 95 Houses in Lindley Park!



For more than 16 yrs I've been honored to work with many of my neighbors, helping to buy or sell their home. For exceptional service, knowledge of the neighborhood and results, please give me a call.

Patti Eckard

336-339-5927

patti.eckard@gmail.com



14 THANKS TO OUR 2016 SUPPORTERS

Ann Cahill & Neil Swenson
Blake & Kristin Sagar
Adam & Kathy Spivey
Elizabeth Riggs & Charles Cameron
Bill & Patti Eckard
Diane Burns
Libby Jeter & Peter Zellmer
Leila Villaverde & Roy Carter
Jerry & Anne Baumgartner
James & Sylvia Chandler
Stephen Johnson & Marnie
Thompson
David & Holland Steinberg
Allan Calarco
Jack & Shera Osborne
Robert Grier & Karen Hartsoe
Mary Herbenick

David & Mary Ann Murray
Joseph Barvir & Virginia Gaylor
Cliff & Becky Berrier
Jerry & Anne Baumgartner
William & Rachael Revell
Gertrude Beal
Phil Lewis
Ralph & June Farthing
Mark Fricke
Charlotte Plyler
Ray & Shabi Olive
Martie Floyd
Rebecca Mendendorf
Madeline Fiol
Hana Brown
Naomi Galbreath
Pete Bouras

Chris Hutts
Rachel & Jeff Winstead
Charlie Hertlein
Sarah Vincent
Adam Winkel & Jill Bender
Betty Lewis
Rebecca Deane Van Der Sommen
Jack & Sharon Ridge
Fred & Susan Chappell
David Sowers
Michael & Meredith Carlone
Ellen Muratori
Sheila Duell & Robert Bellomy
DC Hoyer
Hollace Bryson
Tim & Theresa Byrd
LA Collins

It's time to make 2017 contributions! LPNA donations help make events like the Chili Cook-Off, National Night Out, Luminarias and more happen. Contributions also support communications like the website and this newsletter. We hope you will contribute annually; \$15 per household is suggested. Feel free to bring a check to LPNA events or mail to LPNA-Blake Sagar, c/o Farlow, Marlowe & Co. PLLC, 4125-D Walker Ave., Greensboro, NC 27407.

One of the things that makes Lindley Park great are the locally owned and operated businesses. Did you know that our generous advertisers completely pay for the cost of this newsletter? Thanks to all our advertisers for keeping local news alive in Lindley Park!

Herford says **Attention: All Cats & Dogs!**
It's time to clean those pearly whites.

Proper dental care helps give your pet a good, long life... preventing mouth infections and loss of teeth. Digital dental radiography enables us to detect early dental disease below the gum line. Bacterial infections in the mouth have a direct line through the bloodstream to your pet's heart, liver & kidneys.

Schedule an appointment in February and receive a
20% DENTAL DISCOUNT



University Animal Hospital
— of Greensboro, LLC —



CHRISTINE E. HUNT, DVM • COLLEEN CROZIER, DVM
1607-B West Friendly Ave. • Greensboro • 336-279-1003
(At corner of W. Friendly Ave. & Westover Terrace ext.)

www.DrChristineHunt.com



2017 LPNA Contribution Form

LPNA contributions help make events like the Egg Hunt, Spring Fling, Chili Cook-Off and Holiday Luminarias happen. Contributions also support communications like our website and this newsletter. We hope you will contribute annually; a \$15 per household donation is suggested. Please fill out the form below and mail checks to: LPNA-Blake Sagar, c/o Farlow Marlowe & Co. PLLC, 4125-D Walker Ave., Greensboro, NC 27407. You can bring a contribution to the monthly LPNA board meeting or contribute online at lindleyparknc.com/support.

Name(s) _____

Address _____

Email _____

Home phone _____

Donation amount _____

Please indicate areas of interest:

- | | | |
|--|---|--|
| <input type="checkbox"/> Community art projects | <input type="checkbox"/> Environmental concerns | <input type="checkbox"/> Living Map development |
| <input type="checkbox"/> Newsletter development | <input type="checkbox"/> Newsletter delivery | <input type="checkbox"/> Public safety or zoning |
| <input type="checkbox"/> Event planning or execution | <input type="checkbox"/> Pool refurbishment | <input type="checkbox"/> Children's programs |
| <input type="checkbox"/> Historic Documentation | <input type="checkbox"/> Centennial Celebration | |

tasting room
boutique wine bar & wine retail shop

JOIN THE BARREL CLUB (\$29/month)
Includes: 2 bottles
10% off
15% off case purchases
Free Wine Tastings
2 stemless TR classes
4 Bottle wine Tote
OTHER PERKS!

901 S. Chapman Street | Greensboro, NC 27410 | 336-676-5602 | www.tastingroomgso.com

Facebook: Tasting Room Gso
Instagram: [tastingroomgso](https://www.instagram.com/tastingroomgso)

Triad Local First

LOVE



Lindley



1st Annual Neighborhood Valentines Gym Dance

When: Saturday, Feb. 11th 6:30pm to 8:30pm

Where: Lindley Recreation Center:
Gymnasium, + Side Play Rooms

Why: There should be no need to explain why
you should bring your family to a
neighborhood gym jam.

What: Deelay, Lights, Snack Tables, Punch
Bowl, Line Dancing, Kids hangout room,
Wholesome Community Love.

Volunteers Needed

Family Friendly

Light Fare, Drinks



Brought to you by the Lindley Park Athletic Crew &
the Lindley Park Neighborhood Association.