

COLUMNS



THE LINDLEY PARK
NEIGHBORHOOD ASSOCIATION
NEWSLETTER
LINDLEYPARKNC.COM



Cut The Music Prints live presses these and other Greensboro themed t-shirts at the Corner Market. Check it out!

2 LPNA TEAM



ADAM SPIVEY

Chair
chair@lindleyparknc.com



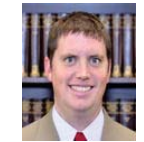
JOSH SHERRICK

Vice Chair, Events & Celebrations
vicechair@lindleyparknc.com



REBECCA MEDENDORP

Secretary/Communications
communications@lindleyparknc.com



BLAKE SAGAR

Treasurer
treasurer@lindleyparknc.com



BILL ECKARD

Govt/Community Liaison
luminaries@lindleyparknc.com



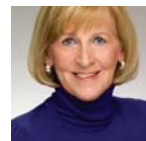
ELIZABETH LINK

Healthy Neighborhood
elizlink04@gmail.com



KATE SILTON

Newsletter Editor
newsletter@lindleyparknc.com



PATTI ECKARD

Newsletter Advertising
advertising@lindleyparknc.com



JOYCE EURY

Newsletter Distribution
joyceury@gmail.com



SUSAN TAAFFE

Neighborhood Congress Rep
susantaaffe1@gmail.com

OPEN

All District Representatives



WANTED – Volunteer AD COORDINATOR for The Columns.

Duties involve

- Serving as primary contact with local businesses wanting to place ads in The Columns.
- Providing information to prospective advertisers on size of ads, rates and distribution process.
- Coordinating with the Editor about placement of ads in the Columns
- Distributing copies to several neighborhood businesses, and the Rec Center for residents to pick up an extra copy.
- Billing businesses for the ads.
- Turning over ad money to Treasurer.
- Six issues are produced yearly
- Most of duties can be handled via email.

This is a great way to learn more about local, neighborhood businesses while helping the neighborhood association. The ads not only pay most of the costs of the newsletter, but also help provide funding for many of the neighborhood activities like the Easter Egg Hunt, Spring Fling, Fall Fest and Holiday Luminaries. For more information – contact Patti Eckard, patti.eckard@gmail.com .



The Columns is published by the Lindley Park Neighborhood Association. Hand-delivered copies go to more than 1,200 households in the area. If your street does not receive the newsletter, we probably just need a volunteer to deliver it! Contact Joyce Eury about delivery at joyceury@gmail.com.

The Columns is posted digitally at www.lindleyparknc.com. Sign up to get it by email by contacting us at lpnagso@gmail.com.

The Columns also can be found at Bestway, Gene's Barber Shop, Lindley Rec Center, Spring Garden Bakery, the Corner Farmers Market and Common Grounds.

GOT IDEAS?

Of course you do! We want to hear from everyone! Send stories, ideas, photos, history or questions to Kate Silton at newsletter@lindleyparknc.com

LPNA Events:

August 7: National Night Out at Lindley Pool, 7-9pm (co-hosted with Sunset Hills and sponsored by Kiosco)

August 28: LPNA Business Meeting at Common Grounds, 7pm

September 25: LPNA General Meeting at Lindley Recreation Center, 6:30pm

October TBA: 11th Annual Chili Cook-off

Lindley Elementary Events:

August 6: New to Lindley? Tour the school and meet staff. 3-6pm.

August 22: Open House 5:30-7pm

August 27: First Day of School

September 4: PTA General Meeting

October 19: Fun Run

The Lindley Elementary PTA is always accepting donations. If your business is interested in sponsoring the Fun Run, please contact PTA Co-President Holli Bayonas at hbayonas@gmail.com

DANNY'S TIRE & AUTOMOTIVE CENTER

YOUR LINDLEY PARK NEIGHBOR SINCE 1988

FAMILY OWNED AND OPERATED

COME MEET YOUR NEIGHBOR

VISIT OUR WEBSITE FOR MORE INFORMATION

www.dannystireandauto.net

MENTION THIS AD AND RECEIVE \$5 OFF NC STATE INSPECTION

1112 PARK TERRACE 8-5 MONDAY - FRIDAY

336-292-1226

Other updates:

- Waiting on approval from state DOT for Walker Ave. bridge improvements.
- The Corner Market now has a monthly sustainer program.
- Memorial cherry tree on Park Terrace will be replanted in the fall.
- Those concerned with overgrowth on vacant lots and other properties can call local ordinance enforcement: 336-373-CITY.

4 MILES FOR MATTHEW

MFM10

Ten years running

Miles for Matthew
5K/10K runs on
Saturday,
September 29
in Lindley Park,
2700 Camden Road

8:30 am 10K race start
8:35 am 5K race start
Babysitting available
(\$5 per family)

To register and make strides to end
Duchenne muscular dystrophy, visit:
www.runsignup.com/Miles4Matthew

Grand prize raffle
\$5 entry
Disney Half Marathon weekend!

All proceeds benefit
Parent Project Muscular Dystrophy



On September 29, runners, walkers, strollers and volunteers will be out and about in Lindley Park for the 10th annual Miles for Matthew! We would love for you to join us in whatever capacity you see fit as we raise funds for gene therapy research to treat Duchenne muscular dystrophy. Whether you participate or not, we encourage you to take a look at the course map to be prepared for foot traffic and road blocks. Thank you for your support!
-Allison Greiner



**Gene's
Barber Shop**
2412 Spring Garden
336-299-8669



Established 1956.
53 years of service to the
neighborhood.
Walk-ins welcome or call for
appointment.
Tues.-Fri., 8 am - 6 pm
Sat. 7:30 am - 3 pm

At your service:
Frank Dorrity, Ben Ma,
Jim Nelson, Bill Young,
John Ma



What will you find at The Corner Farmers Market in August?

Here's a partial list...

apple butter, bacon, basil, baguettes, batik, baklava, beignets, beeswax food wraps, beets, beef, beef jerky, beet burgers, bone broth, blueberries, bonsai, books, brisket, brownies, butter, CBD oil treats, cantelope, carrots, catnip toys, cheesecake, chicken, chutney, cilantro, coffee, community, corn, country ham, cream cheese, creamer potatoes, croissants, crochet, cutting boards, deodorant, dog treats and dog food, dried herbs, dried apples, dryer sheets, duck, duck eggs, earrings, eggs, eggplant, eggplant parmesan, empanadas, essential oils, English muffins, fertilizer, face painting, figs, fresh flowers, garlic, gemstones, ghost peppers, ginger juice, gluten-free treats, granola, goat cheese, golden beets, hand pies, honey, hot sauce, ice cream, jalapenos, jam, jewelry, kid's make and take, Kielbasa, kimchee, kiwi vines, kombucha, kraut, kale, knives, kvass, leeks, lemon curd, macarons, macrame, magnets, maple syrup, marinara, mint, magnets, molasses, mozzarella, muffins, mushrooms, nitro cold brew coffee, okra, pasta, peaches, peach trees, pesto, pickles, pimento cheese, plums, pork, pound cake, pottery, queso fresco, quinoa cakes, radishes, raw milk, raspberry bushes, scarves, ricotta, rosemary, salsas, salads, samosas, sausage, scallions, smoothies, shibori, soap, sourdough, spinach, squash, succulents, sweet potatoes, swiss chard, t-shirts, tea, thyme, tie dyes, tomatoes, tropical plants, vegan treats and sweets, veggie lasagna, wooden spoons and spatulas, watermelon, yellow squash, zines, zucchini

New vendors:

Carlos' Empanadas, Rochelle's goat cheese, Meghan's LiteraTeas, Papa Dave's Pimento Cheese, and Sylvia's Hand Pies!

Please consider supporting the market's Green for Greens fund, which supports customers shopping at the market with SNAP/EBT cards. Or become a monthly sustainer!

<https://squareup.com/store/cornermarketgso>

<https://neighborhood-markets-inc.secured.atpay.com/>

**Nobody knows your neighborhood
Better than your neighbor**



For more than 16 yrs I've been honored to work with many of my neighbors, helping to buy or sell their home. For exceptional service, knowledge of the neighborhood and results, please give me a call.

Patti Eckard
336-339-5927
patti.eckard@gmail.com



6 DEAR LINDLEY PARK

By Shaun O'Connor

I just wanted to take a moment to thank this incredible neighborhood I've been fortunate enough to call home for the last 8 years. When I moved here from Asheville in 2010, I was less than thrilled to say the least. I moved here only to be with my now wife, and I was pretty much hoping we'd be moving back to Asheville at some point. I was 32 and didn't know anyone, took some menial jobs I didn't enjoy, and was convinced this was not the place for me. Well, it took several years but eventually after the birth of our amazing daughter, we started to meet people, mostly at the playground at first, and quickly developed some amazing friendships (shout out to the LPC!) From there it just snowballed and it became more apparent how truly incredible Lindley Park is.



I've met so many talented, progressive, genuine, kind, and caring people in this neighborhood. When I first moved here, we lived on Peebles, which is the extreme fringe of LP, and we got the Columns. I never really thought twice about why we were receiving a neighborhood newsletter. We then moved a street over to Collier but still hadn't pieced everything together, but I was beginning to get the sense of how cool this neighborhood was and wanted to be a bigger part of it. I remember seeing signs for LPNA meetings at the Rec Center but I never went. One night I decided I was going to go check one out. I arrived by myself and the larger of the two rooms at the Center was close to max capacity. I stood in the back and was amazed at how many people were there to take part in community decisions.

From there on I attended several others sporadically and observed the crowds dwindling, but I met a lot of great folks who truly were committed to keeping LP a special place and I became more involved. It's one thing to just live somewhere but a whole other experience to become really connected to it. Our family is only moving a whopping 4 miles away, but it's bittersweet to be leaving LP and Lindley Elementary. We look forward to new experiences but will miss it here more than we could imagine now. We will still be here for all the chili cookoffs, Spring Flings, and all other special events that keep this community tight. But the point is, if you're still reading this, go get involved, drop in at the Rec Center or Common Grounds for an LPNA meeting, be active in your neighborhood. You won't regret it. Thanks Lindley Park, we do love you and glad we will see you often.

Editor's note: Shaun deserves a huge thanks for organizing the Lindley Park Athletic Crew and the annual Love, Lindley dance. The O'Connor family will be hugely missed and their new neighborhood is very lucky to have them.

BLAST FROM THE PAST 7

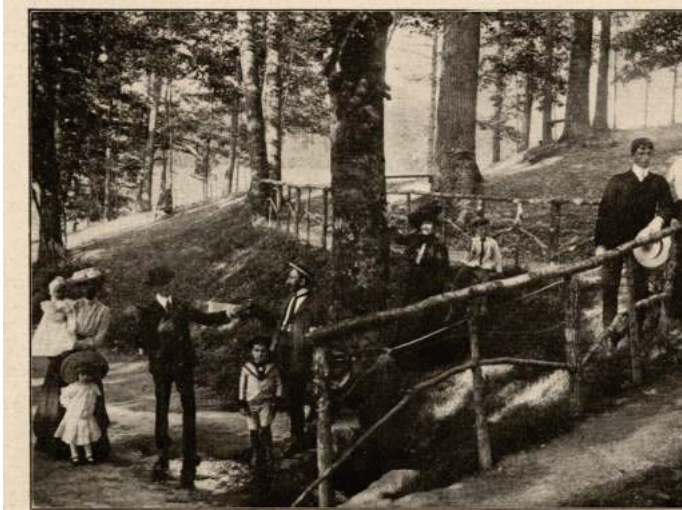


Photo by Alderman & Eutsler

THE SPRING IN LINDLEY PARK

17

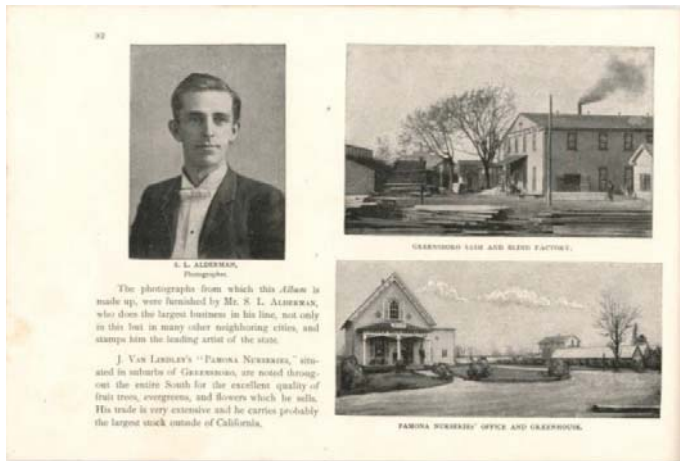
(copy No. # 239)

These photos are from the collection Textiles, Teachers, and Troops -- Greensboro 1880-1945 which is housed at UNCG Libraries.

<http://library.uncg.edu/dp/ttt/greensborohistory.aspx>

Top:

A springtime scene in Lindley Park, circa 1904-1905.



Bottom: a blurb about John Van Lindley's Pomona Nurseries from an 1892 Greensboro Chamber of Commerce Publication.



green door
builders

- repair
- remodel
- renovate

john myers
336-558-5840

ncgc 52703
since 1973
we do a lot more than
build green doors.
call us and see.

Norman B. Smith
Smith, James, Rowlett & Cohen, LLP

Provider of competent, efficient and affordable legal services since 1965.

101 S. Elm Street, Suite 310
Greensboro, NC 27401

Tel: (336) 274-2992
Email: normanbsmith@earthlink.net

8 SHORT-TERM RENTALS

What do short-term rentals mean for Lindley Park?

Many of us have stayed in a short-term rental via airbnb or VRBO while traveling. They can be great alternative to staying in a hotel and are staples in cities known for tourism, like Asheville. But did you know that there are many of these rentals available in our city? The Neighborhood Congress is trying to determine how these short-term rentals can operate in Greensboro. If you are curious about these rentals in our neighborhood, you may be interested in the following city rules that apply to short term rentals.

Greensboro Neighborhood Congress Summary of City Rules on Short-Term Rentals (Airbnb, VRBO, etc.)

- Tied to City regulations for “Tourist Homes” (a/k/a Bed & Breakfast)
 - ▶ A “Tourist Home” is defined as
 - (1) a dwelling (2) in which lodging (with or without meals) is provided (3) for overnight guests (4) for a fee
- Special use permit IS required in single-family residential zoning
 - ▶ but NOT required in multi-family, office, commercial, mixed zoning
- Must be at least 400 feet away from any other “Tourist Home” or rooming house
- Maximum of six guest rooms
- Owner or operator must reside on-site
- Only one kitchen allowed (none in guest rooms)
- Food only served to guests (no restaurant open to general public)
- Patrons cannot stay for more than 15 days within a 60-day period
- Signage is limited to what would be allowed for a home occupation
- Structure must have been originally built for dwelling purposes



The Dailey Renewal Retreat
Bed and Breakfast
808 Northridge Street
Greensboro, NC 27403
336-451-7742
www.daileyrenewalretreat.net

What are special use permits?

Special use permits (SUPs) are issued by the Zoning Commission. The person applying for the SUP must be the owner of the property, and must go through the same steps that someone applying for a re-zoning would go through. They must submit an application and pay a fee. Signs are posted on the property and notices are sent out to surrounding property owners. When the Zoning Commission holds a hearing on the application, it is a public hearing in which neighbors may speak in support of or against the application. It is a quasi-judicial, evidence-based hearing, in which the Zoning Commission is charged with determining whether the proposed use will not be detrimental to persons living or working in the area, whether it will be injurious to property, and whether the location and character of the use is in harmony with the area in which it is located. The decision may be appealed to the Superior Court.

The SUP goes with the property, so subsequent buyers may continue the use. The exception is if the use does not start within two years of the SUP being issued, or if the use is suspended for more than 18 months, in which case the SUP would expire.

The city ordinance governing SUP can be found here:

<http://online.encodeplus.com/regs/greensboro-nc/doc-viewer.aspx#secid-47>



Custom clothing and alterations by Elisabeth Svensson
Located in Lindley Park

www.swdestitch.com
info@swdestitch.com
336-543-0631


Coming from Swede Stitch in October!

Simple Fashion for Autism Awareness.

A line of hooded sweatshirts, tunics and sweatpants where part of the proceeds will go toward raising autism awareness.



"SERVING THE TRIAD SINCE 1978"



**John Budd's
Chimney
Service LLC**

2523 WESTMORELAND DR.
GREENSBORO, NC 27408
TELEPHONE (336) 282-1150

JOHN BUDD

MEMBER OF NORTH CAROLINA GUILD #233
CHIMNEY SAFETY INSTITUTE OF AMERICA
CERTIFICATION #3675

BBB Member



Worship with us
Sundays at 11 a.m.
Gathering to worship ...
Departing to serve.

Lindley Park Baptist Church

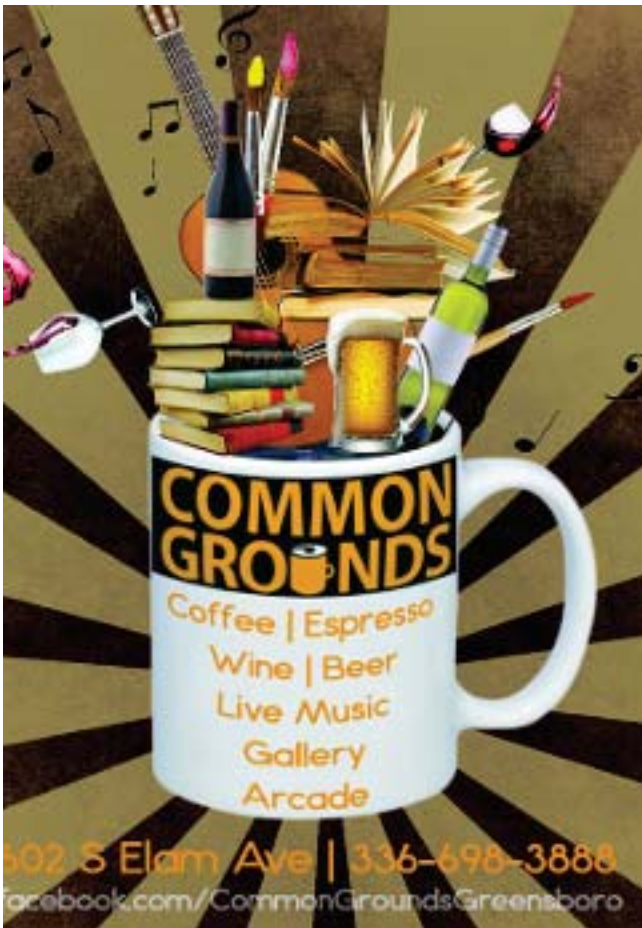



**ONE CALL
home inspections**

**\$50 RADON TESTING WITH THIS AD
NORMALLY \$125**

LINDLEY PARK RESIDENT AND
OLDER HOME SPECIALIST

Steve Cauthen
336-509-3469 • steve@onecallinspect.com
www.onecallinspect.com



**COMMON
GROUNDS**

Coffee | Espresso
Wine | Beer
Live Music
Gallery
Arcade

602 S Elam Ave | 336-698-3888
facebook.com/CommonGroundsGreensboro



Leslie Stainback, Broker/REALTOR™

OPENING DOORS

Tyler Redhead
& McAlister
REAL ESTATE

leslie.stainback@trmhomes.com | 336-508-5634

By Tori Carle

It's a pretty normal family gathering at our house when someone asks "is this plate recyclable?" As a resident recycling nerd, you might be on the receiving end of this question and sometimes wonder whether or not you are 100% sure of the correct answer.

GSO Collects is a great fact-checker so that you will never deliver fake recycling news. Searching "plates," "plastic plate," and "paper plate" will forever give you bragging rights when family or friends try to end your reign as official recycling nerd. Download GSO Collects from the App Store, or use the browser version here: www.greensboro-nc.gov/collects.

All kinds of plates are non-recyclable. Even if the packaging says they are. I promise. Why? It depends on what type of plate you're talking about:

1. Ceramic/Glass Plate: we cannot recycle any kind of ceramic in our recycling program. Glass plates are made to withstand higher temperatures than regular glass bottles and jars, so they do not melt properly when recycled. Trash it, donate it if still usable, or creatively repurpose it into something completely different.
2. Paper Plate: food and/or grease residue of any kind is not ok and often times, the plates are made of low quality paper, plastic layers, or waxy coatings that make them non-recyclable. These will contaminate other good paper so it can't be recycled either.
3. Plastic Plates: since they are flat, they get sorted like other flat things at the recycling center: paper. That plastic plate ends up in a big bale of paper, goes to a paper mill, then gets shipped to the landfill anyway.

Just like the super heroes from The Incredibles cannot have capes according to their super suit designer, Edna Mode, our recycling cans must have "no plates!"

Recycle Away,

Tori



FRESH BAKED BREADS • SCONES



OPEN DAILY
FREE Wi-Fi
Call Us For Your Specialty Cake Orders!
MON-FRI: 7AM-6PM
SAT 7AM-6PM
SUN: 8AM-5PM
 1932 SPRING GARDEN ST.
 TEL: 336 272-8199

WRAPS • COOKIES • FRUITBAR

always shoot for the moon!

PEPPER MOON CATERING

Corporate Events | Theme Parties | Wedding Reception
 Rehearsal Dinners | Buffet Dinners | Plated Dinners | Box Lunches
 Barbecues & Picnics | Full-Service Bars | Hosts & Servers

1898 Beaker Road | Greensboro, NC 27409
 Phone 336.218.8006 | www.PepperMoonCatering.com

First Moravian Church

304 S. Flam Ave., Greensboro
 336-272-2196
www.greensboromoravian.org

*"In essentials, unity;
 in nonessentials, liberty;
 in all things, love."*

Sunday School for all ages, 10 am
 Worship, Children's Church, 11 am

Come worship with your neighbors!

ERS
Energy Reduction Specialists of North Carolina

Saving Energy. Saving Money. Everyday

336.643.9199
www.ERSofNC.com

Home Performance with ENERGY STAR

Dana and Brad on Longview St.

- A more comfortable home with less drafts and a more consistent temperature
- Lowered utility bills
- Improved indoor air quality
- Reduced waste and pollution

Elizabeth and Seth on Park Terrace

- Extended life of your heating and cooling equipment
- Increased value and improved marketability of your home
- Environmental stewardship
- Lower your carbon footprint

Call or email Gary Silverstein (Gary@ersofnc.com) or Paul Swenson (Paul@ersofnc.com) to schedule your energy assessment to see how we can help you

To Renovate or Not to Renovate? That is the Question

by Leslie Stainback

leslie.stainback@tmhomes.com

If you've outgrown your home or need to make room for a recent college grad or aging parent, you're likely deciding between two options: renovation or relocation.

Considering today's real estate environment and recent tax changes, more and more homeowners choose to remodel their current home over purchasing a new one. But how do you know if renovating is the right option for you?

Consider the following:

- **Your family's needs:** As a family, give thought to why your current living space no longer meets your needs and discuss the changes you'd like to make. Do you still love your neighborhood? Does your floor plan still work for your family? Are your list of 'problem areas' relatively short? If so, then renovation may be the best option for you. Based on a recent study by Houzz.com, most homeowners these days choose to remodel or renovate primarily to expand rooms – especially master bedrooms, kitchens and bathrooms.
- **Financial investment:** While renovations are typically much less expensive than purchasing a new home, the cost could still be considerable. In 2017, homeowners spent an average of nearly \$34k on renovations, according to Houzz. Several factors impact the overall cost of a renovation, namely the size and complexity of the project. Before you decide on the right direction for your family, be sure to consult your lender and professional contractors to help you plan financially. By engaging experts early in the process, you'll have a better idea of the overall bottom line, which could include other costs like, living expenses during the project (hotels or rentals) and permits and inspections.
- **Time investment:** Depending on the complexity of the overall project, your renovation could take any where from four to eight months. In 2016, Houzz reports that many homeowners maximized their time by renovating up to three rooms at a time – typically kitchens, bathrooms and living rooms. Notably, kitchens tend to be the lengthiest projects, taking an average of two-and-a-half to five months to complete. Less time-consuming projects include home automation and security upgrades that allow homeowners to do things like lock their doors and turn down the A/C by using a smartphone app. Exterior enhancements, like replacing windows and doors, are also typically less complicated, faster projects that can help modernize your home and add to its curb appeal.

Although the thought of renovations can be daunting, if you do your homework and plan accordingly, within a year you can have a more suitable living space for your changing family and add value to your home down the line.

Leslie Stainback, Broker/REALTOR™
OPENING DOORS
Tyler Redhead
& McAlister
REAL ESTATE
leslie.stainback@tmhomes.com



Web Site



The Lindley Park Neighborhood Association web site can be found at <http://lindleyparknc.com>

This site contains loads of useful information: our neighborhood plan, contact information for officers, the latest events, neighborhood history, and of course the entire archive of this fine publication.

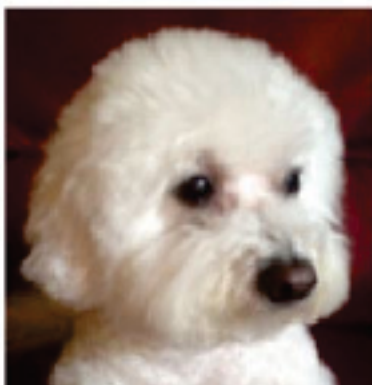
Instagram: #lindleypark

While we do not have an official neighborhood presence on Instagram, many neighbors and visitors use the #lindleypark hashtag on their pictures. Common sights on Insta include delicious food from our many neighborhood restaurants, beautiful scenery at the Arboretum, and properties for sale. Other things that pop up include a park in Bozeman, Montana, and our namesake beer from Old Hickory Brewing.



Alice (age 8) walks her puppy Oscar up Walker Avenue early one morning. This photo, taken by Thea DeLoreto, appeared on Instagram under #lindleypark.

Dogs Can Get Flu, Too



Summer is almost over but Canine Influenza persists all year long. Traveling with unvaccinated dogs puts them at risk for this highly contagious virus. There are currently 2 strains of dog flu, and both have an 8% mortality rate. Symptoms include high fever, cough and pneumonia. Areas with high dog traffic can harbor the flu virus and easily infect unvaccinated dogs. A highly effective Bivalent Influenza Vaccine can protect your pet. For more information, call us to schedule an appointment.

University Animal Hospital
— of Greensboro, PLLC —



CHRISTINE E. HUNT, DVM
1607-B W. Friendly Ave. • Greensboro • 336-279-1003

(At corner of W. Friendly Ave. & Westover Terrace ext.)

www.DrChristineHunt.com



Facebook

LPNA has an official Facebook page. We use this page to communicate details about neighborhood events and to share other useful information with our neighbors. Our Facebook page has been used to get out the word about dozens of missing pets, many of whom are reunited with their owners thanks to social media. The blue parakeet on the right has been spotted all summer long and appears to be living his best life.



Nextdoor

Nextdoor is a social network just for neighborhoods. In order to join, you have to verify your address to prove that you actually live in the neighborhood. If you live in Lindley Park, you can also see activity from nearby neighborhoods like Sunset Hills, Highland Park, Starmount Forest, and more. Neighbors use this space to ask for recommendations, inquire about the source of loud noises, buy and sell items, and more. The City of Greensboro has a huge presence on this network.

WHAT IS MY
LINDLEY PARK
HOME WORTH?

VISIT
www.LindleyParkHouseValue.com

Andy Leung

336.508.1111

www.GreensboroAreaHomes.com
moreinfo@teamleung.com

The Power to Move
You!

16 THANKS TO OUR 2018 SUPPORTERS

Ann Cahill
Bill and Patti Eckard
Stephen Johnson & Marnie Thompson
Michael Adams
William Dixon, Jr
Randy and Carrie Little
Tom Morgan
Katie Armistead
Sarah Downey
Catherine Butler
Frank and Olga Fraton
Ken Snowden and Dyan Arkin
Anne Sparks-Baumgartner
David and Mary Anne Murray
Meredith and Michael Carlone
Eric and Rachael Revell
Deane and Michiel Van der Sommen
Charles Cameron and Elizabeth Riggs
Bobby and Allison Greiner

Quinn and Erin Ditto
Steve and Joyce Eury
Michael Cohn and Kimberly Grove
Justin Harmon
Larry and Beth Shaver
Roger Williams and Kate Silton
Virginia Driscoll
David and Jennifer Terrell
Claudia Cabello and Felipe Troncosco
Bernie and Meg Sisk
Elisabeth Borowicz and Joey Petrack
Sheila Duell and Robert Bellomy
Gertrude Beal
Charlotte Plyler
Barry Goldman and Alice Beecher
Jack and Shera Osborne
Cass and Jennie Heaton
Mary Herbenick

Douglas Hoye
Faye Manheim
Gavin Reardon
Jason Anderson and Marshall Nelson
Dean Finocchi
Adam and Kathy Spivey
Mark Fricke and Susan Gleason
Joyce Burgess
Tom and Tiffany Tomlinson
Chris Hutts
Karla Woodward
Kelly Taylor
Jeri and Randy Henderson
Phil and Dana Gorham
Richard and Helen Morton
Cheryl Ann Clark

2017 LPNA Contribution Form

LPNA contributions help make events like the Egg Hunt, Spring Fling, Chili Cook-Off and Holiday Luminarias happen. Contributions also support communications like our website and this newsletter. We hope you will contribute annually; a \$15 per household donation is suggested. Please fill out the form below and mail checks to LPNA-Blake Sagar, c/o Farlow Marlowe & Co. PLLC, 4125-D Walker Ave., Greensboro, NC 27407. You can bring a contribution to the monthly LPNA board meeting or contribute online at lindleyparknc.com/support.

Name(s) _____

Address _____

Email _____

Home phone _____

Donation amount _____

Please indicate areas of interest:

- | | | |
|--|---|--|
| <input type="checkbox"/> Community art projects | <input type="checkbox"/> Environmental concerns | <input type="checkbox"/> Living Map development |
| <input type="checkbox"/> Newsletter development | <input type="checkbox"/> Newsletter delivery | <input type="checkbox"/> Public safety or zoning |
| <input type="checkbox"/> Event planning or execution | <input type="checkbox"/> Pool refurbishment | <input type="checkbox"/> Children's programs |
| <input type="checkbox"/> Historic Documentation | <input type="checkbox"/> Centennial Celebration | |